

Daily Epidemiological Report for SARS-Cov_2

Report No. 305

Date Issued 02 Feb. 2021 @22H00

1. PURPOSE

The report provides a descriptive analysis of SARS-Cov-2 related cases and deaths, which were detected, reported and investigated in the Eastern Cape Province, as on 02 Feb. 2021.

2. HIGHLIGHTS

a. As on the 02nd February 2021, **64** new SARS-Cov-2 cases were reported; with a majority of the newly reported cases reported in Nelson Mandela Metro (26.6%), followed by the Buffalo City Metro (23.4%).

- Active Cases: Of the **2640** current active cases, majority are in Chris Hani (**35%**), followed by Amathole (**18%**) and OR Tambo (**16.2%**).
- The provincial recovery rate was **93%**. Only the Chris Hani district reported a recovery rate below 90%.
- From the 5th of January 2021 to date, testing rate has increased while the percentage of specimens testing positive has decreased.

b. **Covid-19 related deaths:**

- In the last 24 hours, **63** new deaths were reported with **25** of the deaths occurring in the last 48 hours (DATCOV).
- **Clinical audits and back capturing of deaths into DATCOV have identified an increase in the number of deaths especially in between June and August 2020.**

c. **Hospitalizations and outcomes:**

As on 01 February 2021, there were **841** admitted cases; 70.2% in the public sector and 29.8% in the private sector. More than 41.9%, were admitted in the general ward, 7.4% in ICU and 43.7% in High Care. About 62% of the current admissions were on oxygen and 14.5% were on ventilation.

d. **Healthcare workers:**

- The cumulative number of healthcare workers who tested positive for SARS-Cov-2 was **10,898** and **248** demised (the case fatality rate was 2.3%).
- Nurses were the most affected, followed by doctors and clinical associates. **There is an increase in the positivity rate among healthcare workers in the metros.**

Conclusion

- The burden of disease due to SARS-Cov-2 appears to be declining but still remains high in some areas of the province.
- Just over half of the active cases are in Chris Hani, Joe Gqabi, OR Tambo and Amathole.
- Six districts report a recovery rate, which is above 90% and 2 districts, Chris Hani and Joe Gqabi, report recovery rates less than 90%.
- There is a need to strengthen identification of suspected cases, collection specimens for COVID-19 testing, isolation of cases and quarantining of contacts. Promoting compliance to non-pharmaceutical interventions remains a central strategy in preventing further spread of infections in communities.

3. SARS-Cov-2 CASES & DEATHS

3.1. Summary of all cases and deaths

On the 02nd of February 2021, **64** new cases and **68** deaths (**25** occurred in the last 48 hours). The cumulative number of cases and deaths were **192,182** and **10,781** respectively.

	No. of cases	New Cases	Total	%	Deaths	New Deaths		Total	CFR
						*Newly Reported	**Newly occurred		
Male	75926	24	75950	39.5	4595	18	13	4626	6.1
Female	115995	40	116035	60.4	6118	25	12	6155	5.3
Unknown	197	0	197	0.1	0			0	0.0
Total	192118	64	192182	100.0	10713	43	25	10781	5.6

* Deaths which occurred more than 48 hours ago ** Deaths which occurred within the last 48 hours of reporting

The provincial case fatality rate (CFR) was reported as 5.6%, with a CFR of 6.1% among males and 5.3% among the female population. Clinical audits in hospitals are vital and provide valuable information to estimate the burden of disease.

District	Cases	New Cases	Total Confirm	Recoveries	Deaths	New Deaths		Total Deaths	CFR%	Recovery Rat	Active Cases
						*Newly Repo	**Newly occurred				
Alfred Nzo	7848	7	7855	7213	381	21	1	403	5.1	91.8	239
Amathole	19067	1	19068	17543	1045	1	5	1051	5.5	92.0	474
BC Metro	38292	15	38307	35820	2284	0	3	2287	6.0	93.5	200
Chris Hani	19236	7	19243	16861	1456	1	2	1459	7.6	87.6	923
Joe Gqabi	7282	4	7286	6734	350	1	4	355	4.9	92.4	197
NM Metro	54917	17	54934	51652	3198	12	9	3219	5.9	94.0	63
OR Tambo	22225	7	22232	20621	1175	7	1	1183	5.3	92.8	428
Sarah Baar	21584	1	21585	20674	824	0	0	824	3.8	95.8	87
Imported	595		595	595	0			0	0.0	100.0	0
Unspecifie	1072	5	1077	1048	0			0	0.0	97.3	29
E. Cape	192118	64	192182	178761	10713	43	25	10781	5.6	93.0	2640

* Deaths that occurred more than 48 hours ** Deaths which occurred within the past 48 hours of reporting

In the past 24 hours 64 new cases were reported; Nelson Mandela Metro (26.6%), Buffalo City Metro (23.4%), Chris Hani (10.9%), OR Tambo (10.9%), Alfred Nzo (10.9%), Joe Gqabi (6.3%), Amathole (1.6%) and Sarah Baartman (1.6%).

Of the 2640 active cases, Chris Hani accounted for 35%, Amathole (18%), OR Tambo (16.2%), Alfred Nzo (9.1%), Joe Gqabi (7.5%), Buffalo City Metro (7.6%), Sarah Baartman (3.3%) and Nelson Mandela Metro (2.4%).

The overall provincial recovery rate was 93%. Seven districts reported a recovery rate greater than 90% and the Chris Hani district reported a recovery rate of 87.6%.

3.2. Newly diagnosed cases

Figure 1 provides the 7-day moving average of newly reported cases by district comparing a period of weeks, 19th-24th and 25th – 01st February 2021.

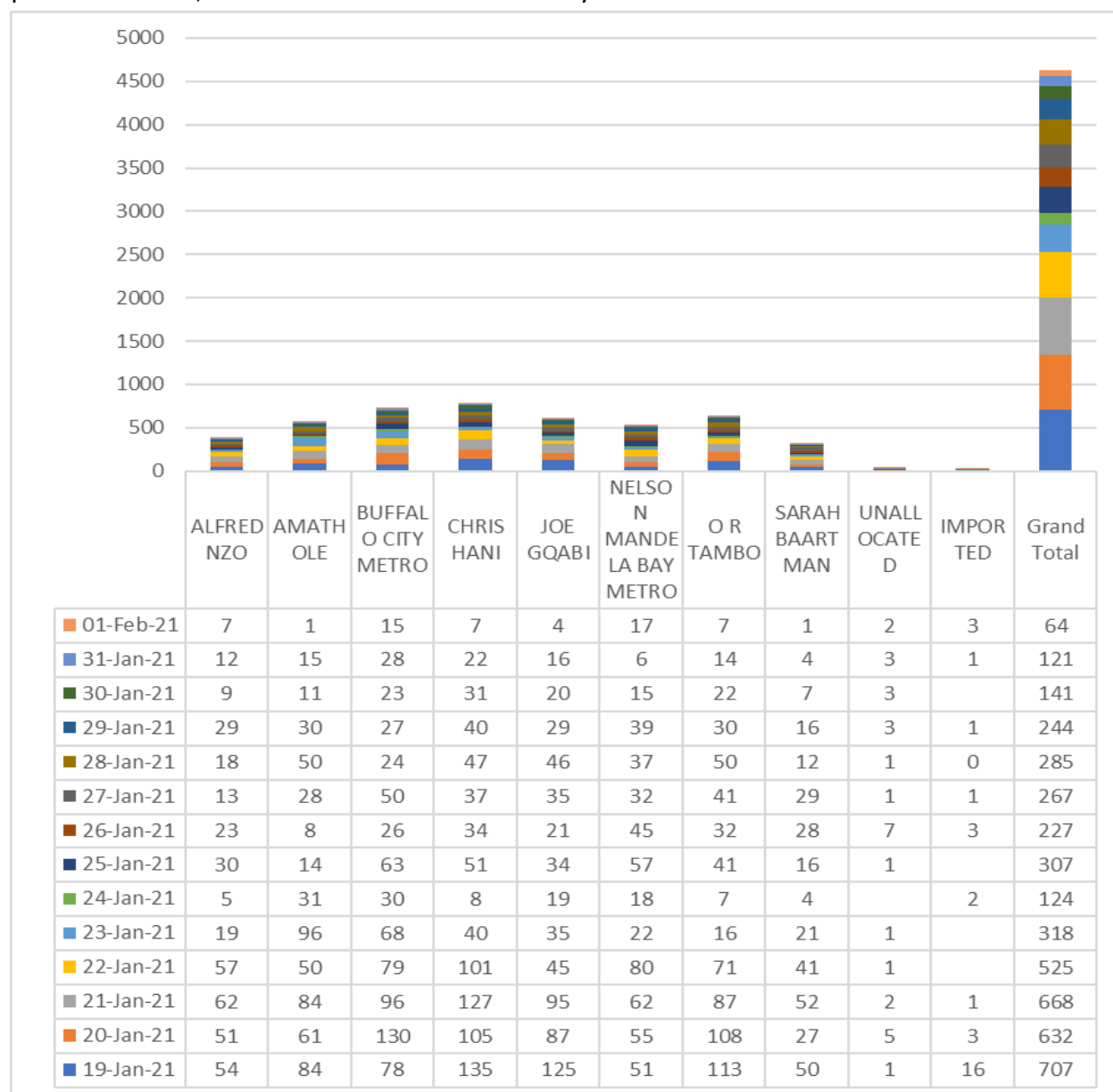


Fig. 1. Number of daily newly reported SARS-Cov-2 cases by district, as on 02nd Feb. 2021

4. SARS-Cov-2 LAB TESTS & RESULTS

4.1. *Test Results by Laboratory

The number of specimens tested by public and private sector laboratories was 845,990. About 63.2% of the tests were done in the public sector and 36.8% in private sector laboratories.

Table 3. Number of tests for Private and Public by Laboratories, as on 02 Feb 2021				
	Private	Public	Total	%
Alfred Nzo	2449	26766	29,215	3.5
Amathole	8339	67791	76,130	9.0
BC Metro	30821	91677	122,498	14.5
Chris Hani	6866	53127	59,993	7.1
Joe Gqabi	1281	25325	26,606	3.1
NMB Metro	35290	122928	158,218	18.7
OR Tambo	16631	65081	81,712	9.7
Sarah Baartman	3764	81286	85,050	10.1
Unclassified	206568	0	206,568	24.4
Eastern Cape	312009	533981	845,990	100.0

4.2. *Antigen Testing

The total number of specimens tested using the antigen testing method, was 55,466 with a 13.5% positivity rate.

Table 4. No. of SARS-Cov-2 Tests and results using Antigen Test Method, as on 02 Feb 2021					
	Negative	Positive	Total	Percentage (%)	Positivity Rate (%)
A Nzo	4084	908	4992	9.0	18.2
Amathole	3061	593	3654	6.6	16.2
BC Metro	7159	1568	8727	15.7	18.0
Chris Hani	5863	1111	6974	12.6	15.9
Joe Gqabi	1897	448	2345	4.2	19.1
NM Metro	14729	1251	15980	28.8	7.8
OR Tambo	7289	1311	8600	15.5	15.2
Sarah Baartman	3911	283	4194	7.6	6.7
Total	47993	7473	55466	100.0	13.5

The Nelson Mandela Metro district accounted for 28.8%, followed by Buffalo City Metro (15.7%), OR Tambo (15.5%), Chris Hani (12.6%), Alfred Nzo (9%), Sarah Baartman (7.6%), Amathole (6.6%), and Joe Gqabi (4.2%). Proportion of specimens testing positive for SARS-Cov-2 using the Rapid Antigen Method was 13.5%, with Alfred Nzo (18.2%), Joe Gqabi (19.1%), Buffalo City Metro (18%), OR Tambo (15.2%) and Amathole (16.2%).

4.3. *Tests by age group and sex

The following figure 3 provides the number of tests done by age group. The economically active age group (20 to 59 years) accounted for the majority of tests conducted (63.5%).

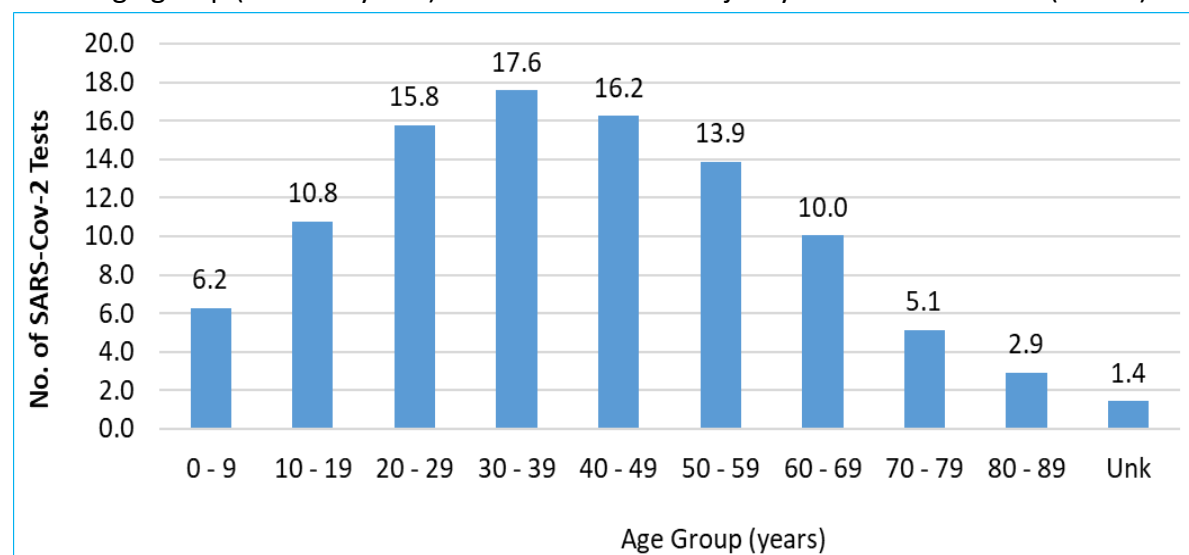


Fig. 3. Public sector SARS-Cov-2 tests by age group, as on 02nd Feb. 2021

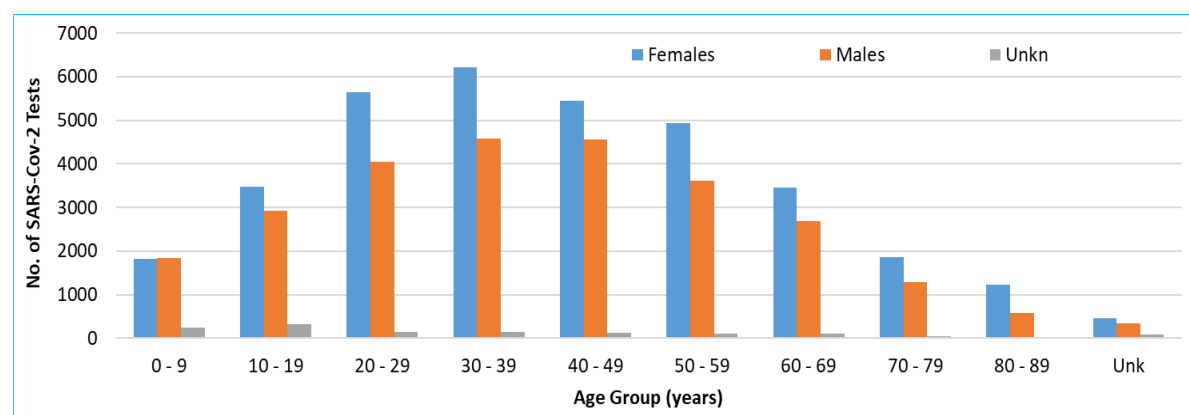
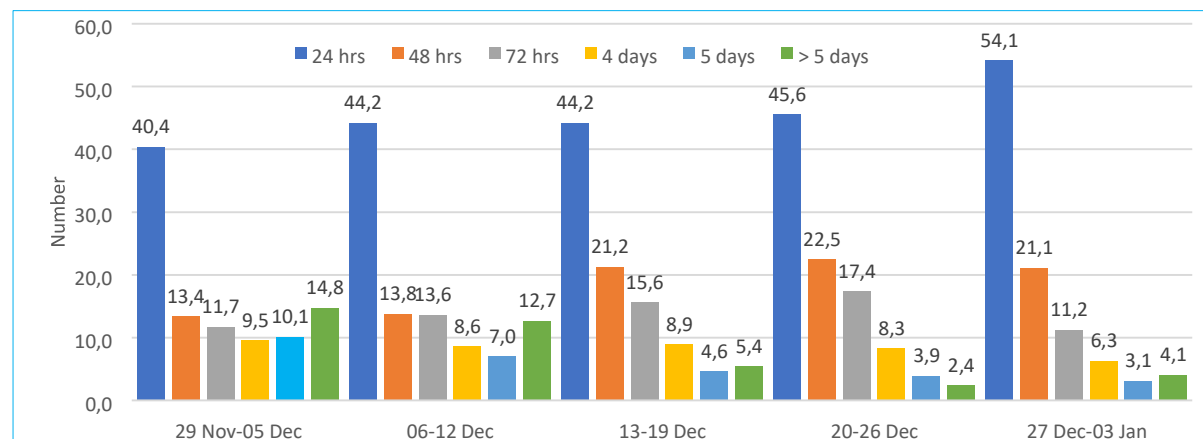


Fig. 4. No. of SARS-Cov-2 public sector tests by age group and gender, as on 31st Jan 2021

Figure 4 provides the number of tests conducted in the public sector by age group and gender between the 30 November 2020 and 31 January 2021. The female population accounted for 34,537 (55.4%) and male population accounted for 26,500 (42.5%) of the positive tests. Less than 3% (1,354) lacked information on gender.

4.4. *Turnaround Time

The turnaround time is used as a key performance indicator of the laboratory performance. The table below provides the turnaround time in both public and private laboratories that was reported by NICD.



*The data for TAT by the laboratory is only updated when available

Fig. 5. Turnaround time for positive results by week as on 03rd Jan. 2021

Over 86% of the test results were available within 72 hours or less compared to 85.5% in the previous week, a decrease of 1.2%. Fifty-four percent of the results were available within 24 hours, a 18.6% increase compared to the previous week.

4.5. *The 7-day moving average of SARS-Cov-2 tests & positivity rate

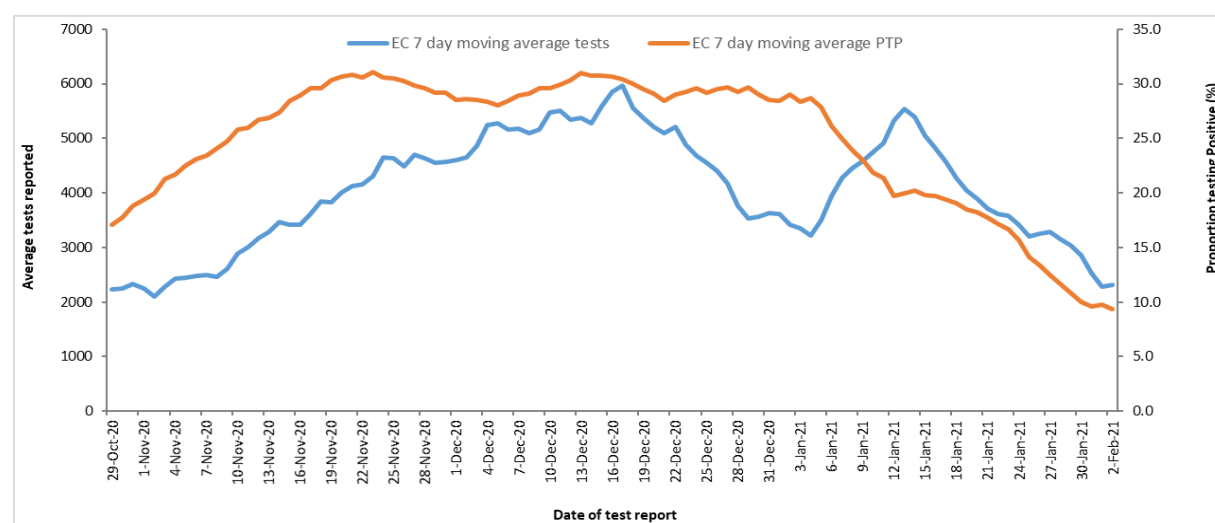


Fig. 6. 7-day moving average for laboratory tests and positivity rate, as on 02nd Feb. 2021

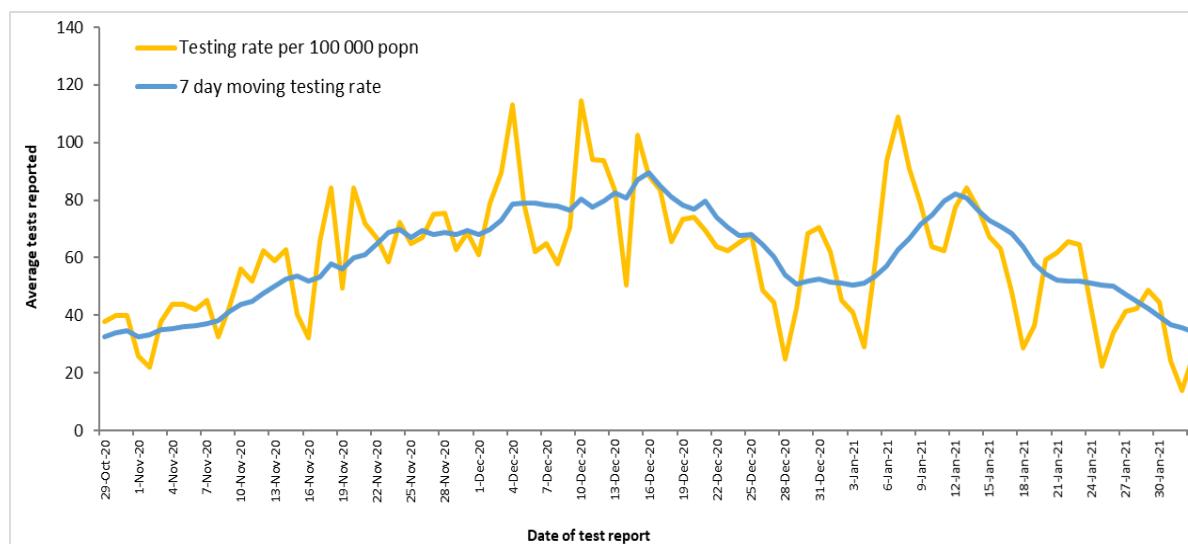


Fig. 7. The 7-day moving average for tests and testing rate, as on 02nd Feb. 2021

The seven-day moving average and testing rate has decreased from 47 tests conducted per 100,000 on 27 January to 34 tests per 100,000 on 02 February 2021.

5. ACTIVE CASES, INCIDENCE & POSITIVITY RATE

5.1. Active SARS-Cov-2 cases and the cumulative positivity rate

District	Population Estimates	No. of tests	SARS-Cov-2 Cases (ALL)	Active SARS-Cov-2 Cases	SARS-Cov-2 per 100,000 (Active)	Positivity Rate
Alfred Nzo	827826	28,218	7855	239	28.9	27.8
Amathole	798067	73,592	19068	474	59.4	25.9
BC Metro	798798	120,571	38307	200	25.0	31.8
Chris Hani	733743	58,033	19243	923	125.8	33.2
Joe Gqabi	343075	25,249	7286	197	57.4	28.9
NM Metro	1210803	155,615	54934	63	5.2	35.3
OR Tambo	1520922	80,247	22232	428	28.1	27.7
S Baartman	480223	83,452	21585	87	18.1	25.9
Imported			595	0		
Unspecified		171,127	1077	29		
Eastern Cape	6713457	796104	192182	2640	39.3	24.1

The province reported 39.3 active cases per 100 000 population as of 02 February 2021. The cumulative positivity rate was 24.1%. Three districts reported a cumulative positivity rate above 30%. The Chris Hani district reported the highest number of active cases; 125.8 active cases per 100,000 population for the past 7 days, followed by the Amathole and Joe Gqabi district (59.4 and 57.4 respectively). Five districts (Alfred Nzo, Sarah Baartman, OR Tambo, Nelson Mandela Metro and Buffalo City Metro) had less than 50 active cases per 100,000 population.

5.2. Incidence of SARS-Cov-2 cases

The incidence of SARS-Cov-2 is above the hotspot threshold (10 cases per 100 000 population) in all districts. Since week 2 there has been a decrease in incidence in all districts. The past two weeks the province observed a decrease following a rise observed in week 52 (20 to 26 December 2020).

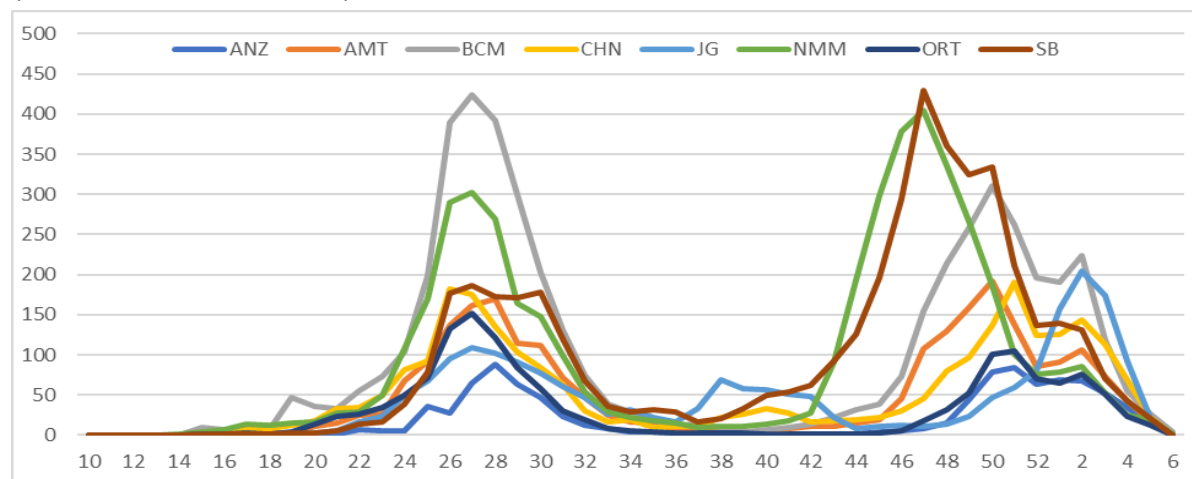


Fig. 8. Incidence of SARS-Cov-2 cases by epidemiological week, as on 02nd Feb. 21

In the past 7 days, the incidence of SARS-Cov-2 decreased from 51.3 cases per 100,000 on the 26th to 39.3 per 100,000 on the 02nd January (Figure 9). Only one district reported a minimum of >100 active cases per 100,000 populations, and 7 had less than 100 per 100,000 active cases.

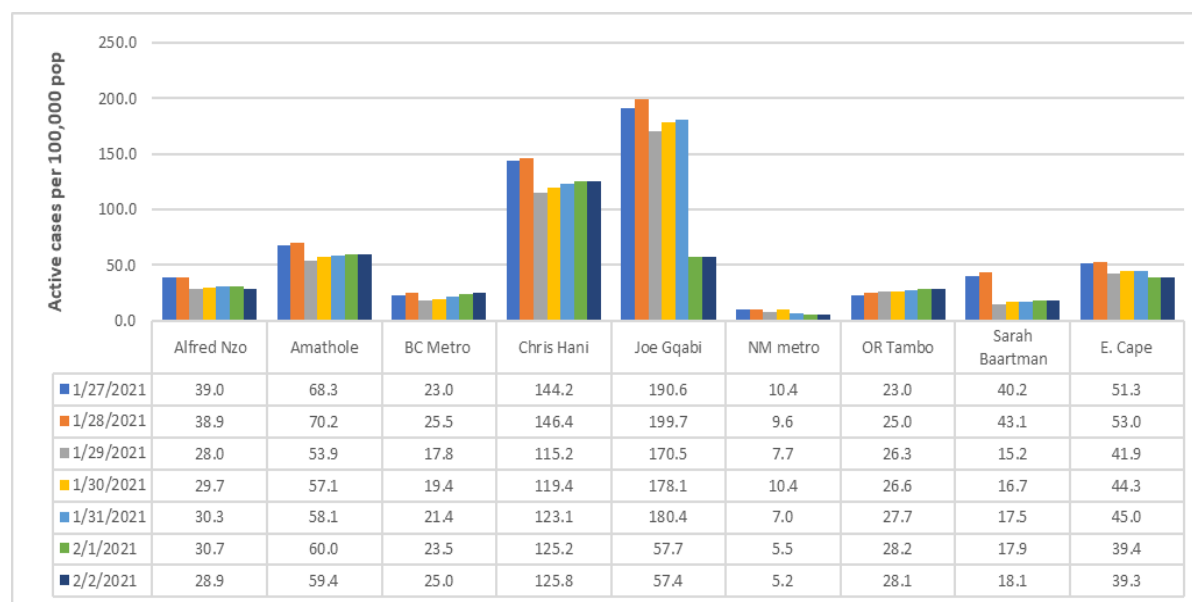


Fig. 9. Incidence of active SARS-Cov-2 (per 100,000) by district date, as on 02nd Feb. 2021

5.3. Recovery Rate (%)

The figure below provides the recovery rate over a period of 7 days for each district.

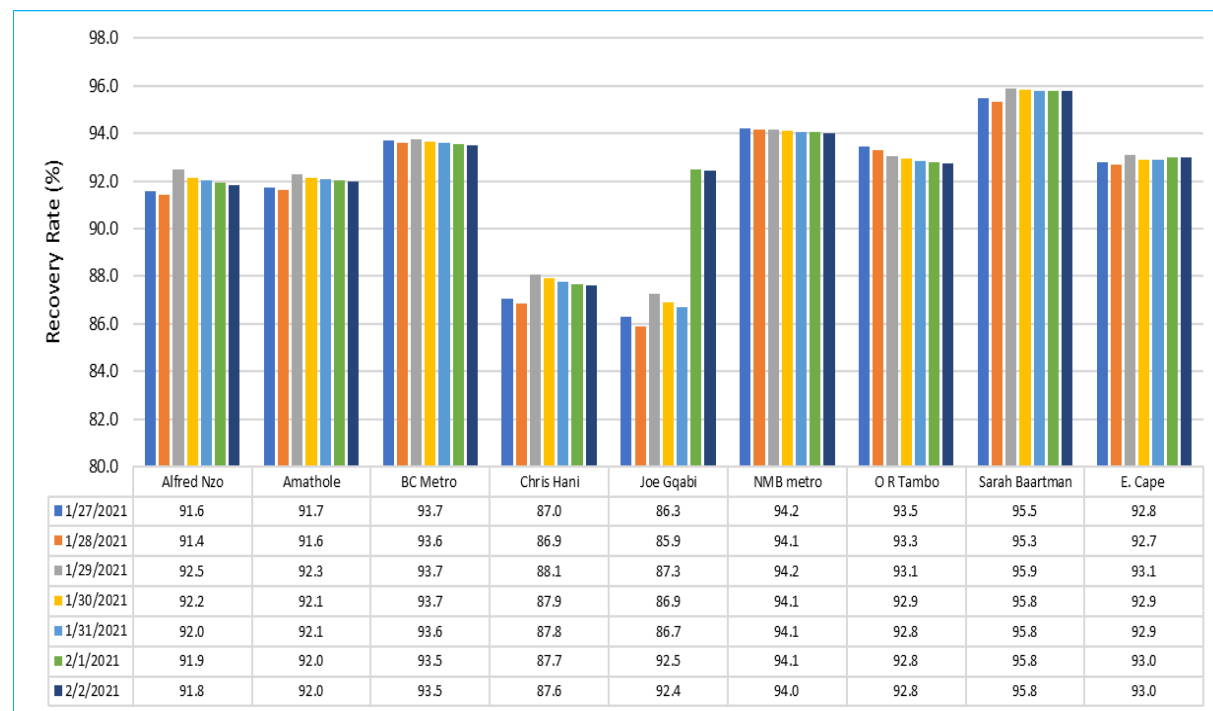


Fig. 11. Recovery Rate (%) by districts, as on the 02nd Feb. 2021 (N=178,761)

The provincial recovery rate remained above 90% over the past 7 days. Seven districts reported a recovery rate above 90%. The Chris Hani district reported a recovery rate below 90% (87.6%).

5.4. Mapping of active cases, recoveries and deaths

The map shows the distribution of active cases, recoveries and deaths related to SARS-Cov2 in the province.

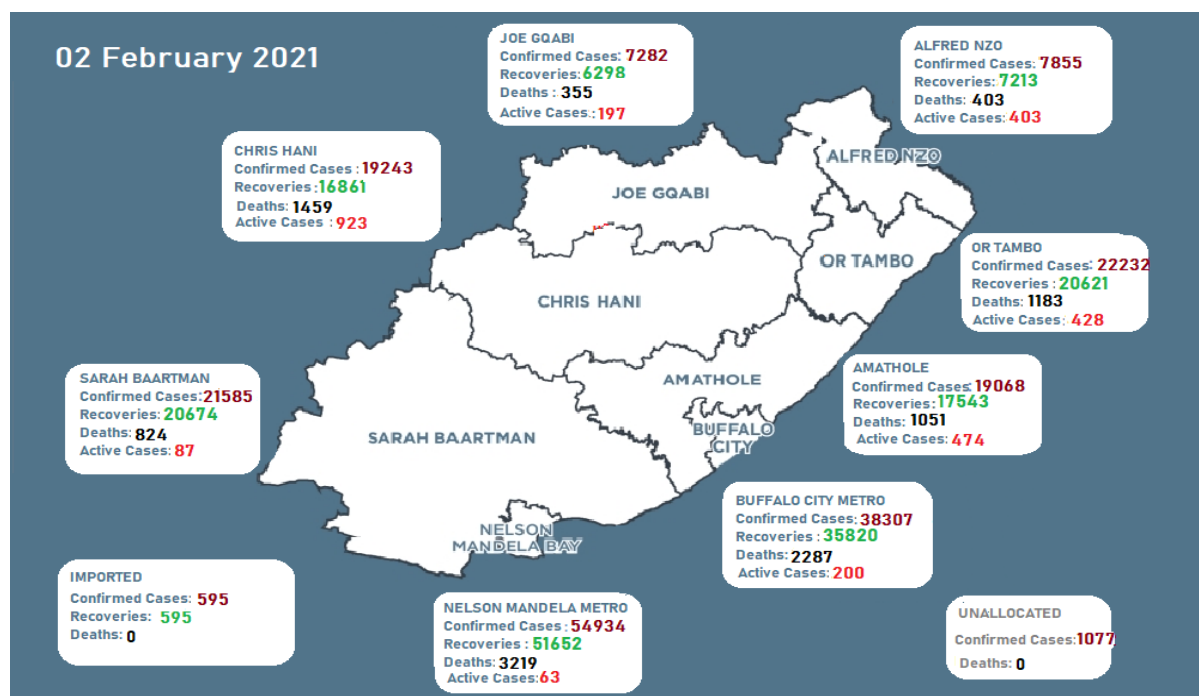


Fig. 12. Number of Covid-19 cases, recoveries and deaths, as on 02nd Feb. 2021

6. SARS-COV-2 CASES AND 7-DAY MOVING AVERAGE

The graph below depicts the total number (including cumulative) of cases and the 7-day moving average.

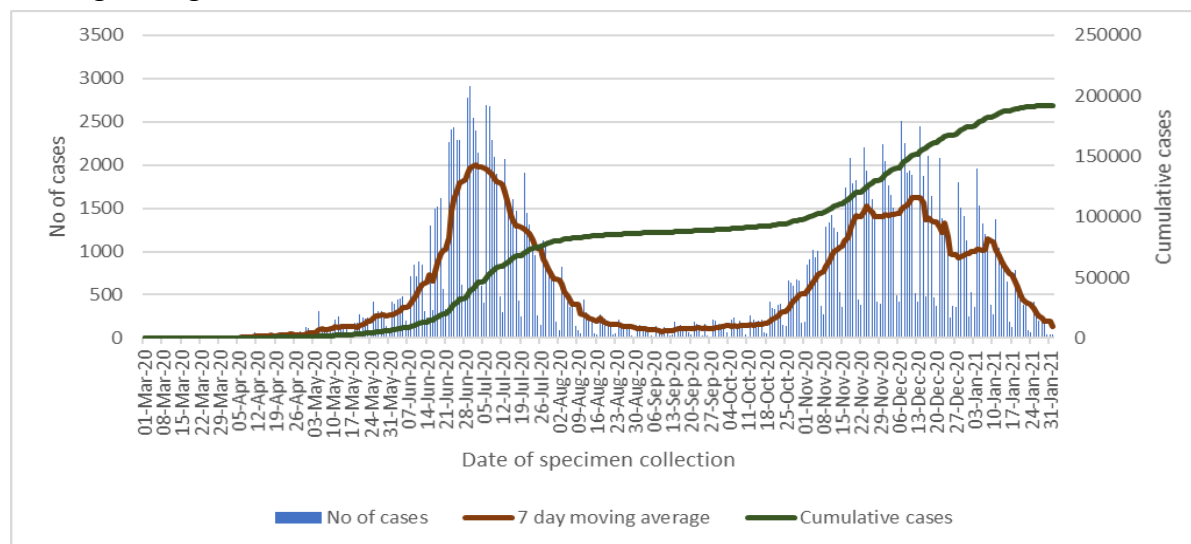


Fig. 13. The 7-day moving average for COVID-19 cases by date of specimen collection (02nd Feb. 2021)

The number of daily newly diagnosed cases increased from the second half of October and peaked in the mid-December, and then decreased until to date. However, the cumulative number continues to show an upward trend. The second peak of the pandemic appears to be approaching the level of the first peak.

7. SARS-Cov-2 RELATED MORTALITY

7.1. SARS-Cov-2 related deaths

The table below provides the total number of cases, deaths and mortality rate by the month.

Month	Cases	Percent (%)	Deaths	Percent (%)	Case Fatality Rate (%)	Mortality Rate (per 100,000)
March	13	0.0	1	0.0	7.7	0.0
April	638	0.3	35	0.3	5.5	0.5
May	3282	1.7	285	2.6	8.7	4.2
June	23783	12.4	1025	9.5	4.3	15.3
July	50289	26.2	2017	18.7	4.0	30.0
August	8279	4.3	663	6.1	8.0	9.9
September	2991	1.6	212	2.0	7.1	3.2
October	8625	4.5	286	2.7	3.3	4.3
November	33706	17.5	1667	15.5	4.9	24.8
December	42469	22.1	2666	24.7	6.3	39.7
21-Jan	18070	9.4	1760	16.3	9.7	26.2
21-Feb	37	0.0	19	0.2	51.4	0.3
Unknown	0	0.0	145	1.3		2.2
Total	192182	100	10781	100	5.6	161

The month of December accounts for the second highest proportion of cases (22.1%) and the highest proportion of SARS CoV-2 related deaths (24.7%). The Case Fatality Rate was highest in May 2020 (8.7) but has since been surpassed by January 2021 reporting a CFR of 9.7% and the month of February starting off at a high CFR of 51.4.

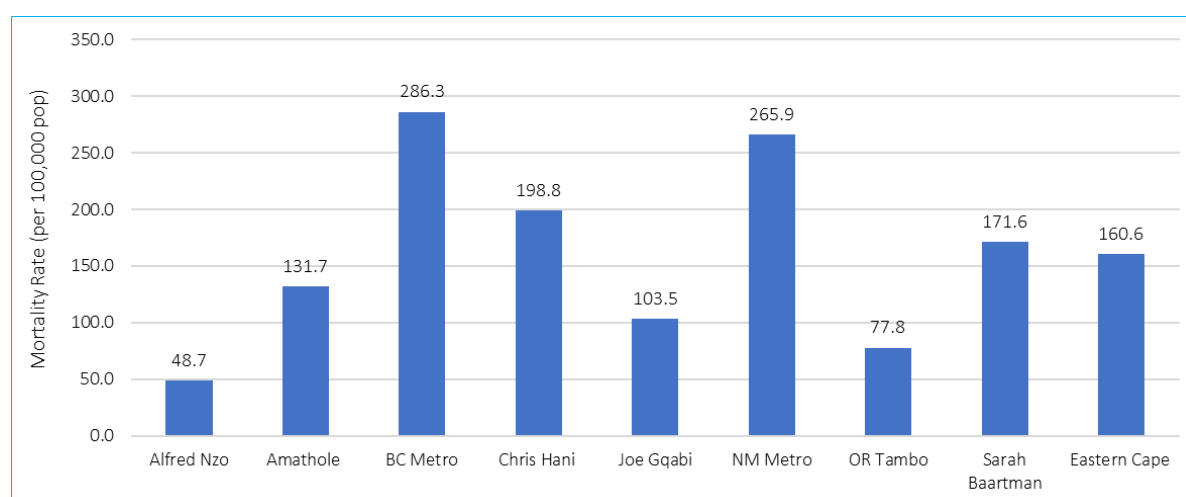


Fig. 14. SARS-Cov-2 related mortality per 100,000 by district, as on 02nd Feb. 2021

The mortality rate related to SARS-Cov-2 was 160.6 deaths per 100,000 populations. The highest mortality rate was observed in Buffalo City Metro (286.3 deaths per 100,000) followed by Nelson Mandela Metro (265.9 deaths per 100,000), Chris Hani (198.8 per 100,000) and Sarah Baartman (171.6 per 100,000).

7.2. Number of reported SARS-Cov-2 related deaths

The figure below depicts the daily deaths and the cumulative number of deaths.

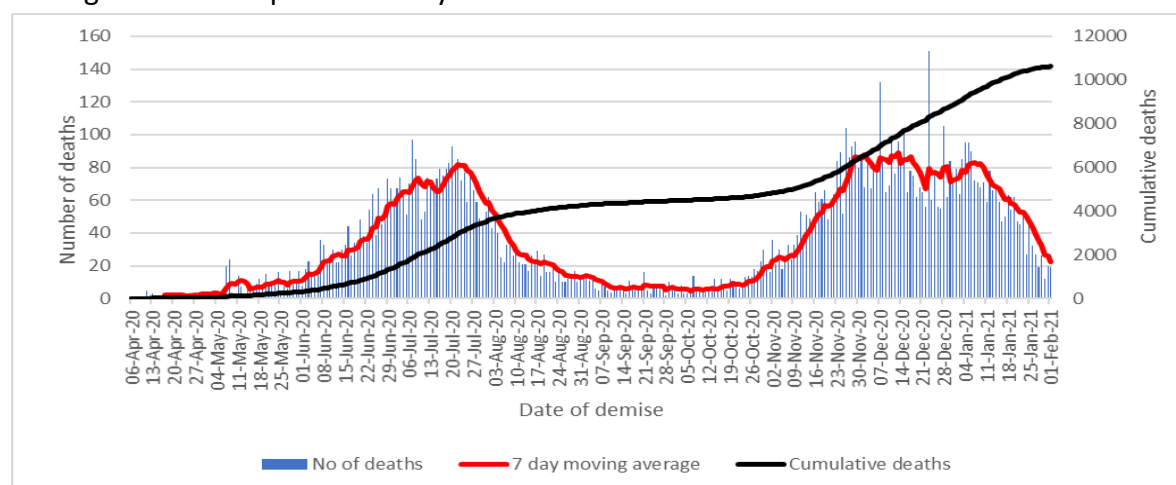


Fig. 15. Daily and cum. SARS-Cov-2 related deaths by date of demise, as on 02nd Feb. 2021

The number of daily deaths increased since May 2020 and peaked on the 20th July 2020, then rapidly declined in August and October. In last week of October, the number of deaths increased and peaked in mid-December. The cumulative number of deaths continues to increase until to date.

7.3. Case Fatality Rate by district



Fig. 16. SARS-Cov-2 Case Fatality Rate (%) by district, as on 02nd Feb. 2021 (N=10,781)

The case fatality rate has increased over the last seven days by 0.2% from 5.4% on the 27th to 5.6% to date. The Chris Hani district reported the highest case fatality rate of 7.6%, followed by Buffalo City Metro (6%), Nelson Mandela Metro (5.9%), Amathole (5.5%), OR Tambo (5.3%), Joe Gqabi (4.9%), Alfred Nzo (5.1%) the lowest being Sarah Baartman by 3.8%.

7.4. Case Fatality Rate by age group

The figure below provides the case fatality rate for both males and females.

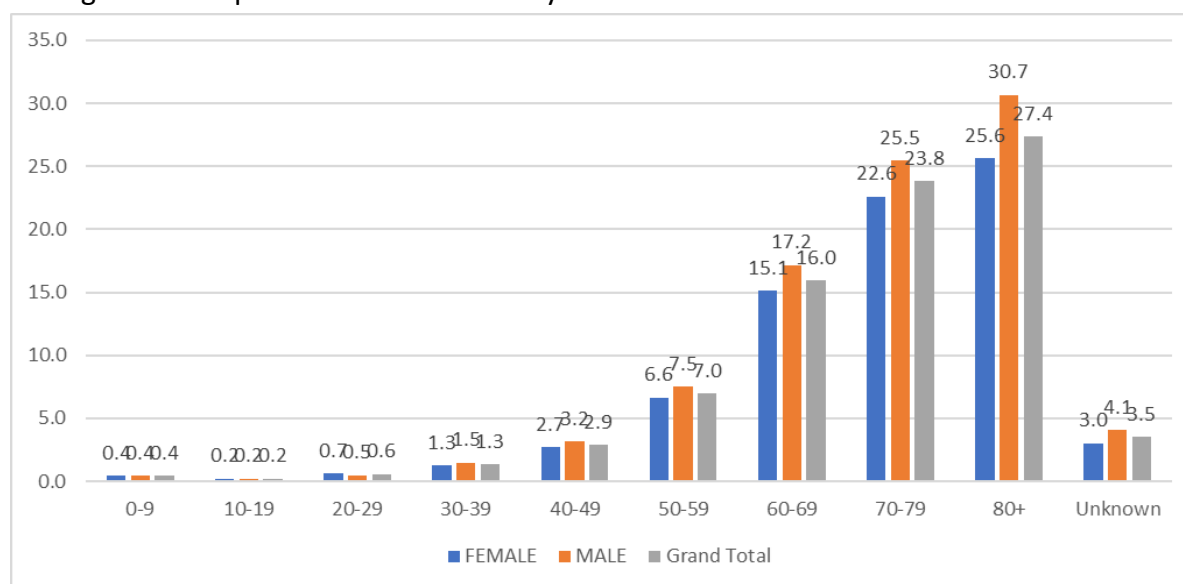
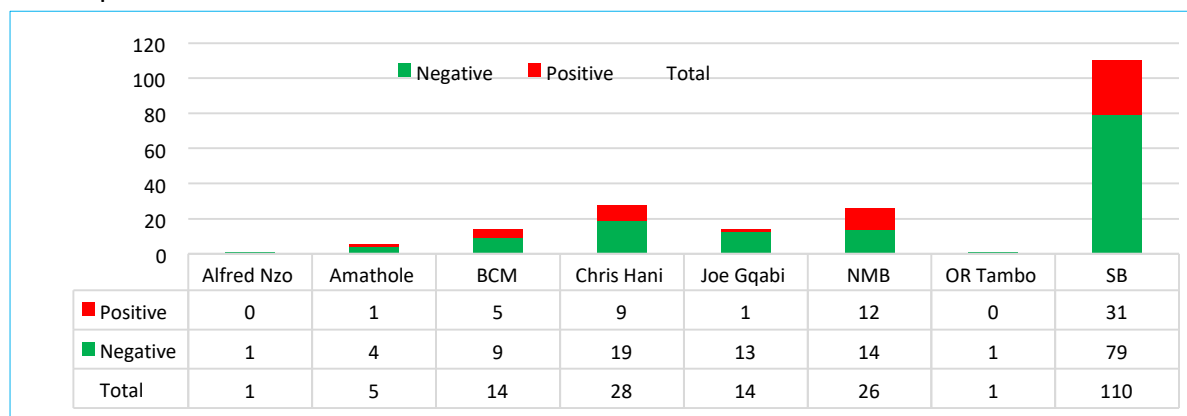


Fig. 17. SARS-Cov-2 related Case Fatality Rate (%) by age group, as on 02 Feb. 2021

The case fatality rate increases with an increasing age. Since the beginning of the pandemic, the younger population had a low case fatality rate compared to the older population that had an increased case fatality rate. The male population had a higher case fatality rate compared to the female population.

7.5. *Post-mortem testing

Thirty percent (30%), i.e. 59 of the 199 post-mortem tests (PMTs) which done in the province tested positive for SARS-Cov-2.



*Data on post mortem test updated when available from NHLS/NICD

Fig. 18. No. of post mortem test results by district, as on 22nd Dec. 2020 (Tests=199)

Fifty-five percent (55,3%) of the tested were done in Sarah Baartman and 31 tested positive (28,2% positivity rate). Twenty-eight (28) PMTs were done in Chris Hani (32,1% positivity rate) and twenty-six (26) in NM Metro Metro (46,2% positivity rate).

7.6. Deaths by health facilities

The figure below provides the number of deaths by hospital or place. Only hospitals or places with a minimum of 20 deaths are included in the figure below.

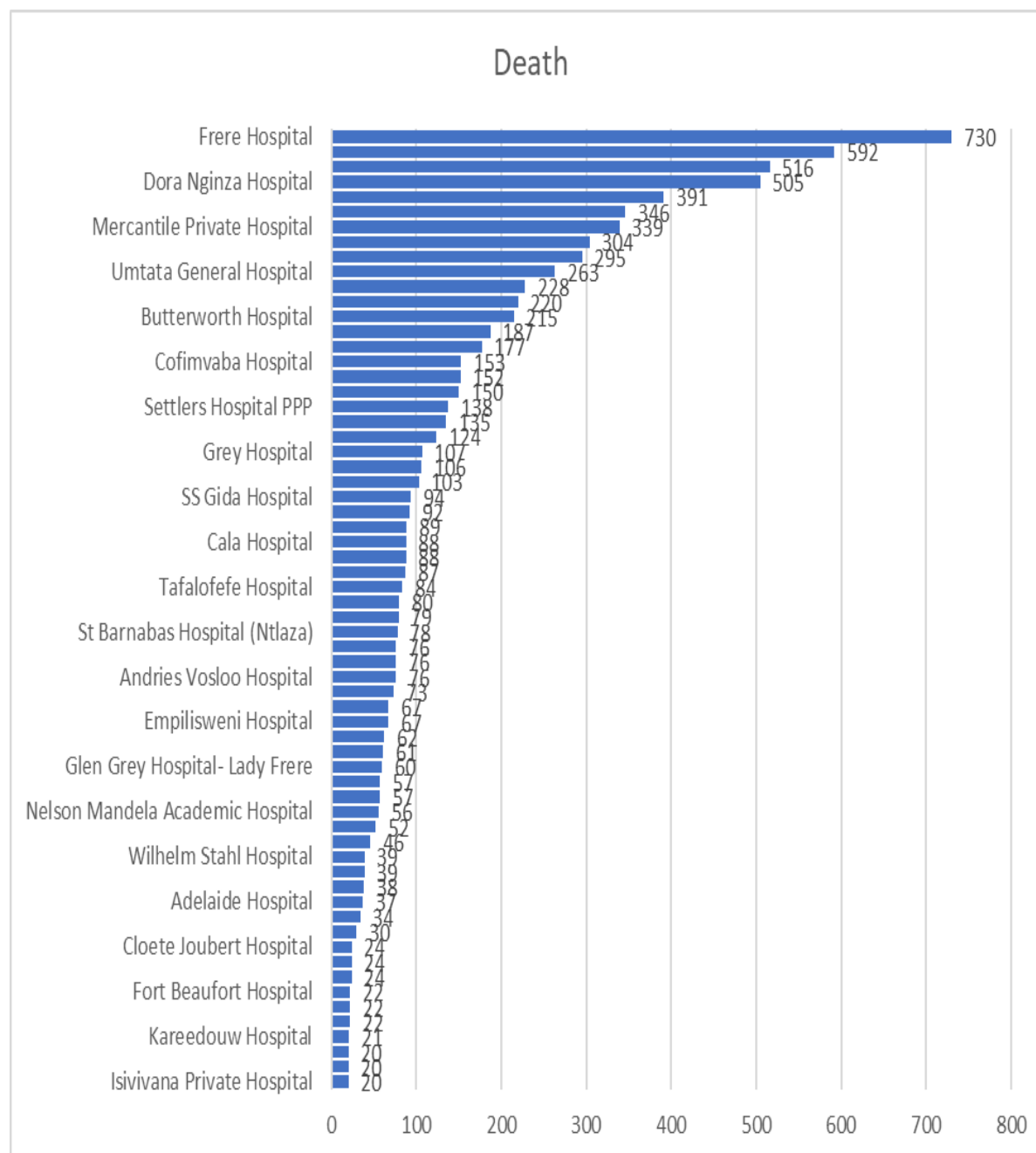


Fig. 19. No. of SARS-Cov-2 related deaths by the facility, as on 02nd Feb. 2021

Frere Hospital (8.2%), Cecilia Makiwane (6.7%) and Netcare Greenacres (5.6%) recorded the three highest number of deaths in facilities (N=8843).

6. HEALTHCARE WORKERS

6.1. Cases and deaths among HCWs

The number of reported healthcare workers who tested positive for SARS-Cov-2 was 10,898 and 248 persons demised.

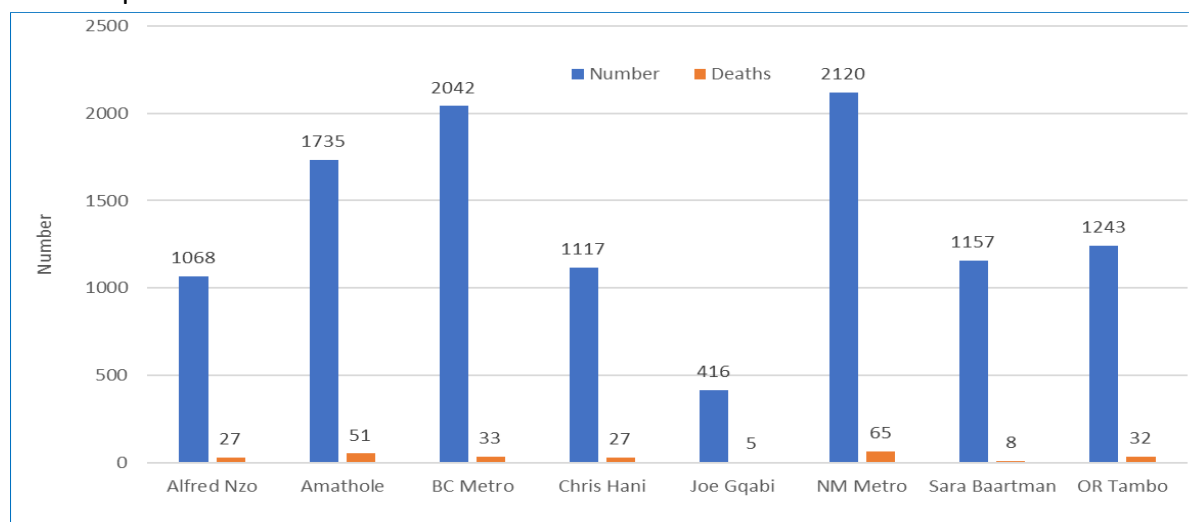


Fig. 20. SARS-Cov-2 positive Healthcare Workers, as on 02 Feb. 2021 (N = 10,898)

The number of healthcare workers who tested positive for SARS-Cov-2 in Buffalo City Metro was 2,042 (33 deaths), Nelson Mandela Metro 2,102 (65 deaths), Amathole 1,735 (51 deaths), Chris Hani 1,117 (27 deaths), OR Tambo 1243 (32 deaths) and Sarah Baartman 1127 (8 deaths) and Alfred Nzo (1068 cases, with 27 deaths). The Joe Gqabi (416 cases, with 5 deaths) reported least number of healthcare workers' infections and deaths.

6.2. SARS-Cov-2 Cases by job category

The table below provides the number of selected healthcare professionals employed by the State and SARS-Cov-2 cases by job categories, and the positivity rate of that job category.

Table 6. SARS-Cov-2 cases by selected job categories, as on 02 Feb. 2021			
	Number	Cases	Positivity Rate (%)
Admin	12434	689	5.5
Allied Professionals	3041	208	6.8
Doctors & Clinical Assoc	2369	405	17.1
Nurses	20650	4443	21.5
Emergency Medical Services	2498	257	10.3

The positivity rate among the nurses was 21.5%, followed by doctors and clinical associates (17.1%), allied professionals (6.8%), EMS (10.3%), and admin personnel (5.5%). The positivity rates among healthcare workers have a negative impact on patient safety, staff morale and confidence, and the capacity of the State to provide quality health services to the population.

6.3. Case Fatality Rate (%) among HCWs

The figure below provides the cases fatality rate among all healthcare workers.

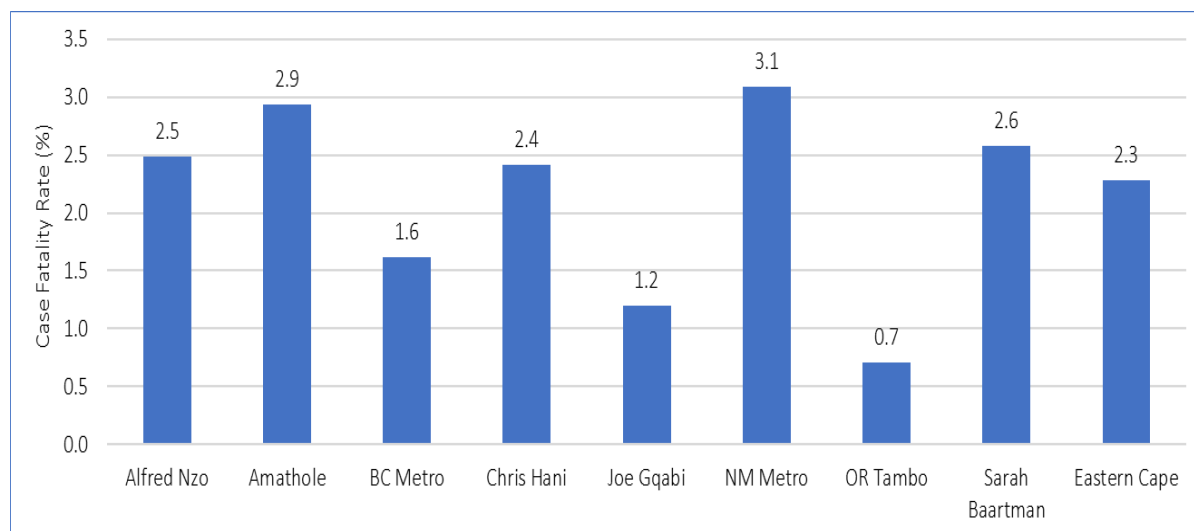


Fig. 22. SARS-Cov-2 Case Fatality Rate (%) among HCWs, as on 02nd Feb. 2021 (N=248)

The case fatality rate among healthcare workers was 2.3%. Nelson Mandela Metro, Amathole, Alfred Nzo, Chris Hani and Sarah Baartman had each more than 2% of the healthcare workers succumbing to SARS-Cov-2, Buffalo City Metro (1,6%). The lowest case fatality rate was observed in OR Tambo (0,7%).

7. Hospitalization and outcomes

7.1. Admissions and outcomes

The cumulative number of SARS-Cov-2 hospitalizations is 30,442 (DATCOV).

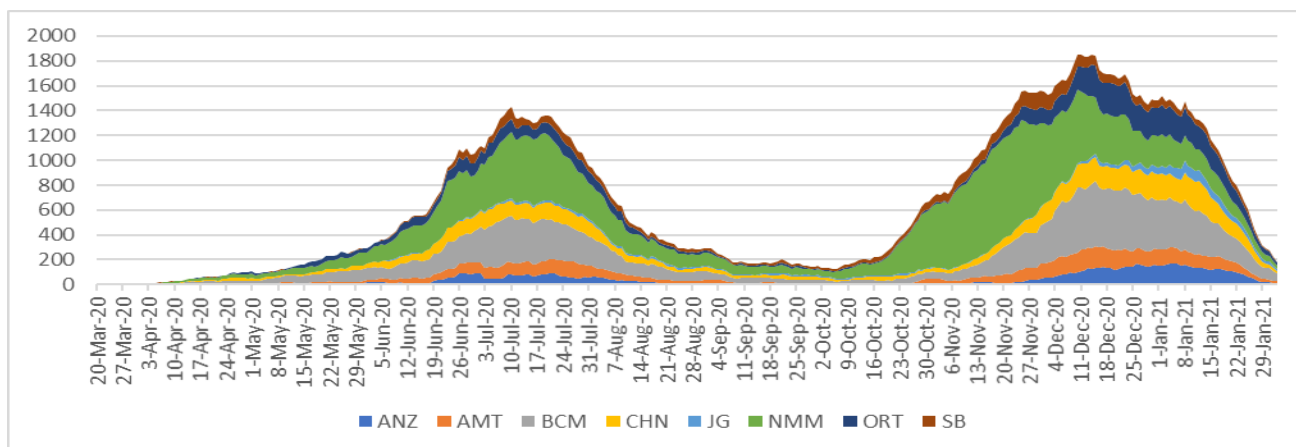
Table 7: No. of hospitalization by district, as on 01 Feb. 2021				
District	Public	Private	Total	Percentage
Alfred Nzo	1628	86	1714	5.6
Amathole	2307	0	2307	7.6
Buffalo City Metro	4165	2979	7144	23.5
Chris Hani	2491	722	3213	10.6
Joe Gqabi	628	0	628	2.1
Nelson Mandela Bay Metro	6509	4291	10800	35.5
O R Tambo	2085	849	2934	9.6
Sarah Baartman	1569	133	1702	5.6
Total	21382	9060	30442	100

Of the reported hospitalizations, 21,382 (70.2%) occurred in public sector and 9060 (29.8%) in private sector health facilities. The metros account for about 58.9% of total admissions.

Table 8. No. of hospitalizations and outcomes, as on 01 Feb. 2021			
Eastern Cape Total	Private	Public	Total
Died	2197	6729	8915
Discharged alive	6582	12594	19176
Current admissions	251	590	841
Transfer to other facility	30	1469	1499
ICU	104	8	112
High care	9	40	49
General	132	497	629
On Oxygen	87	306	393
Ventilated	50	7	57

More than 60% of hospitalized patients were discharged alive and more than 65% of the reported discharges were from the public sector. Over a quarter of hospitalized cases demised due to SARS-Cov-2 related causes with 75% of reported deaths occurring in public sector facilities (DATCOV).

Of 841 current admissions, about 41.9%, were admitted in the general ward, 7.4% in ICU and 43.7% in High Care. About of 62% of the current admissions were on oxygen and 14.5% were on ventilation.



**Daily admissions' 7-day moving average updated based on the availability of data*

Fig. 23 *Average (7 day moving) daily admissions, Eastern Cape Health Facility Districts, as on 01st Feb. 2021 (DATCOV)

As reported on DATCOV on 01 February 2021, the Nelson Mandela Metro accounts for 35% of all hospitalizations, followed by Buffalo City Metro (24.4%).

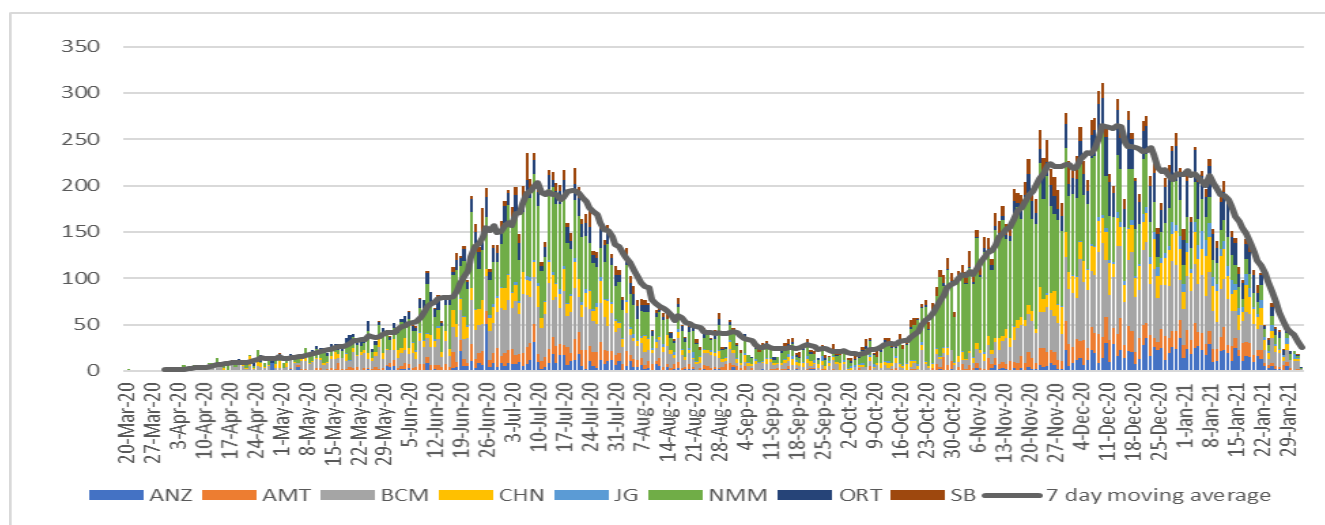


Fig. 24. No. of hospitalizations by date of admission for each district, as on 01st Feb. 2021

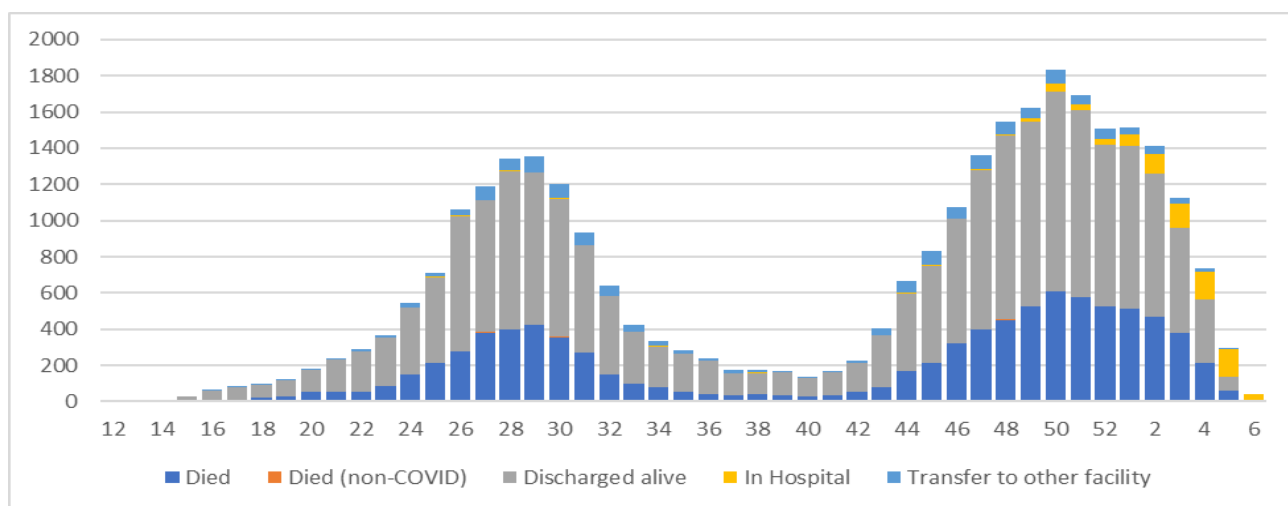


Fig. 25. Hospitalizations & outcomes by admission week, as on 01st Feb. 2021 (DATCOV)

The number of currently hospitalized patients remained high during the last part of the year and started to decline thereafter (Figure 24 & 25).

7.2. Co-morbidities among admitted cases and deaths

The most common co-morbidities among the hospitalized SARS-Cov-2 patients were hypertension (33.7%) and diabetes (22.6%) among hospitalized SARS-Cov-2 cases. Two other co-morbidities which were common include HIV (6.1%) and obesity (4.7%).

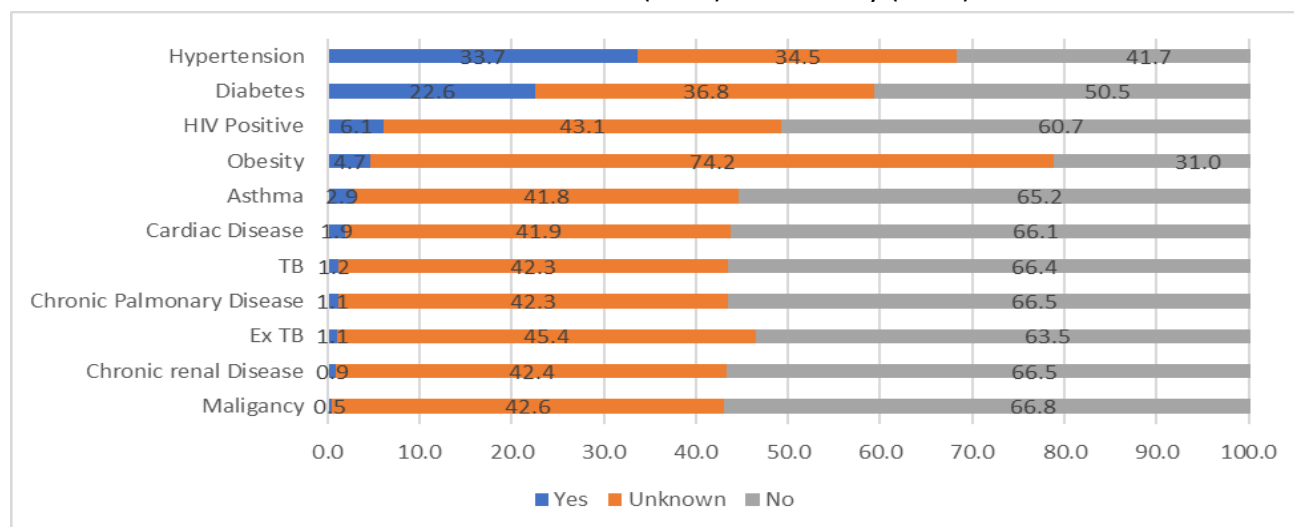


Fig. 26. Co-morbidities among SARS-Cov-2 hospitalizations, as on 01 Feb .2021 (DATCOV)

A significant percentage of hospitalized patients did not have co-morbidities. The concern was those cases, which lacked information on the existence of the co-morbidities. This may have resulted in the under-estimation of the burden of co-morbidities among hospitalized SARS-Cov-2 cases.

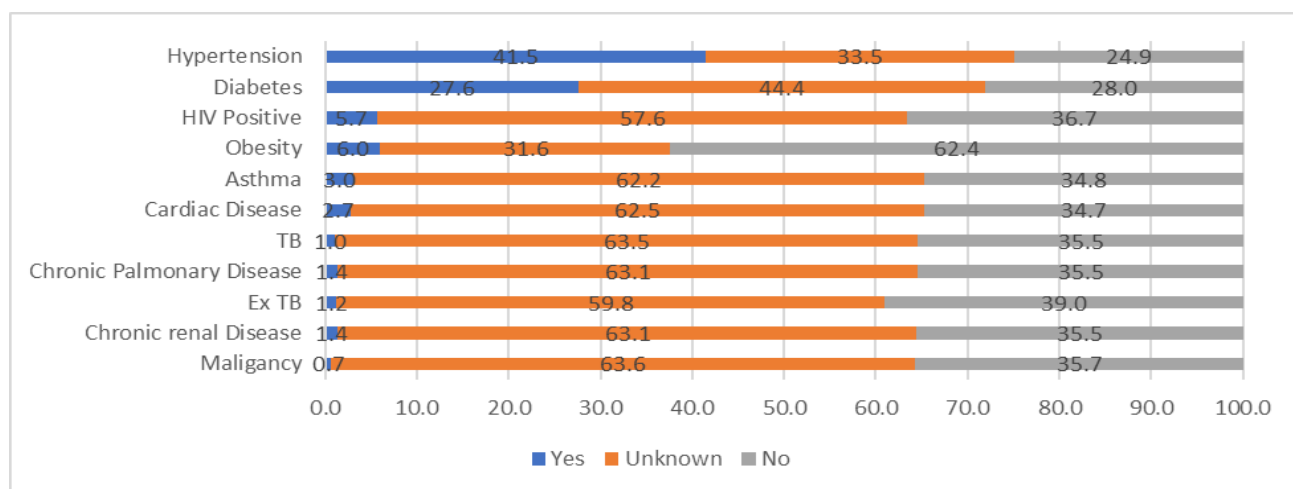


Fig. 27. Co-morbidities among SARS-Cov-2 cases who demised, as on 01 Feb. 2021 (DATCOV)

The most common comorbidities among those cases that demised in the hospital include hypertension (41.5%) and diabetes (27,6%). Four other co-morbidities obesity (6%), HIV (5,7%), cardiac diseases (2.7%), and asthma (3%).

8. CONCLUSION

The burden of disease remains high in nearly all the districts but gradually decreasing. This may be due to the impact of the public health interventions, which were implemented in all the districts. Nearly half of the active cases were from BC Metro, Chris Hani and Amathole; and a quarter of the active cases are from OR Tambo and Alfred Nzo. Unfortunately, the number of deaths have significantly increased with the increase in the number of cases.

There are key issues, which require improvement;

- Strengthen surveillance of SARS-Cov-2 including collection and testing of specimens
- Prioritize contact tracing and monitoring to minimize the spread of the infections
- Isolate positive cases and quarantine contacts to minimize transmission
- Promote the use of prevention measures against SARS-Cov-2, i.e. wearing of masks, social distancing, and frequent handwashing



3 577 773

No Screened



822 576

Total Lab Tests



192 182

Positive Cases



178 761

Recoveries



10 713

Deaths

DISTRICT	TOTAL SCREENED	TOTAL TESTED	TOTAL CASES	RECOVERIES	DEATHS	ACTIVE CASES	AREAS
ALFRED NZO	694 706	29 026	7 855	7 213	381	261	Badibanise,Bhakubha,Bizana,Brooksnek,Cedarville,Chithwa,Dutyini,Emanxiweni,Ezinteteni,Kokstad,Lucingweni,Ma-luti, Mandileni , Matatiele,Mount Ayliff, Mount Frere , Ndlantana, Ngcingo , Ntabakhulu, Sugar Bush, Tabankulu
AMATHOLE	658 126	72 693	19 068	17 543	1045	480	Adelaide, Alice, Bolotwa, Butterworth, Cathcart, Centane, Cuba, Debe Nek, Dikana, Elliotdale, Ethafeni, Frankfort, Fort Beaufort, Ibika, Idutywa, Keiskammahoek, Willowale, Lower Mbangcolo,Debe Nek, Mgababa, Nyaniso, Peddie
BUFFALO CITY METRO	210 367	122 554	38 307	35 820	2284	203	Abbottsford, Amalinda , Beacon Bay, Bisho, Braelynn, Buffalo Flats, Dimbaza, Duncan Village, East London, Gins-berg, Gonubie, Greenfields, Haven Hills, King William's Town, Mamata, Mdantsane, Masingata, Mantlani, Nahoon, Ndevana, Needs Camp, Parkside, Selbourne, Sunnyridge, Sunset Bay,Tshatshu, Vincent, West Bank, Zwelitsha
CHRIS HANI	515 346	60 682	19 243	16 861	1456	926	Bankies, Dordrecht, Dukathole, Ekunene, Ezibeleni, Kwanobuhle, Mkwangele, Madeira Park, New Rest, Ngcobu, Ngonyama, Popcorn Valley, Qebe, Qoqodala, Queenstown, Sigadleni, Vaalbank, Sada, Middleburg, Thornhill, Ndzamela, Mlungisi,Westbourne,Ntlonze, Maya Village,Ekuphumuleni, TopTown, Vleipoot, Zola
JOE GOABI	87 855	24 759	7 286	6 734	350	202	Aliwal North, Barkley East, Bhodi, Land Camp, Ugie, Inglewood, Maclear, Solomzi, Sunduza,Robbenn,Venterstsd
NELSON MANDELA METRO	856 883	171 422	54 934	51 652	3198	84	Algoa Park, Bethelsdorp, Bloemendal, Bluewater Bay, Booyens Park, Cotswold, Cuyler, Daleview, Despatch, Fernglen Port, Gelvandale, Govan Mbeki, Heath Park, Helenvale, Jacksonville, Joe Slovo, Kabega Park, Kamma Park, Kamvelihle, Khayalethu, Kleinskool, Kwa Dwesi, Kwa-Magxaki, Kwanobuhle, Kwanoxolo, KwaZakhele, Lovemore Heights, Missionvale, Motherwell, Mount Croix, New Brighton, Newton Park, North End, Port Elizabeth, Rowallan Park, Salt Lake, Sardinia Bay, Schauderville, Sherwood, Silvertown, Soweto-On-Sea, Steve Tshwete, Summerstrand, Tamboville, Uitenhage, Veeplaas, Walmer, West End, Westering, Zwide, Lorraine, Hillside, Daleview
OR TAMBO	265 613	80 211	22 232	20 621	1175	436	Gomora, Lutatweni, Machibi, Majola, Mandilini, New Payne Ngqeleni, Ntsimbini, Old Payne, Libode, Lusikisiki, Mqanduli, Tombo, Marhewini, Mpikwana,Bhongweni,Cibeni, Flagstaff,Magcakeni,Ngangelizwe, Ngqanda,Tyebelana, Pollar Park, Tabase Mission, Slovo Park, Southernwood, Waterfall Park, Zandukwana,Zimbabwe, Zipphunzana
SARAH BAARTMAN	288 877	90 102	21 585	20 674	824	87	Aberdeen, Alexandria, Graaf-Reinet, Grahamstown, Jeffrey's Bay, Jourbertina, Humansdorp, Parson, St. Francis Bay, Kirkwood, Lotussville, Bergendal, Bratenfel, Joza, Santaville, Somerset East, Thornhill, Willowmore
IMPORTED*	-	0	595	595	0	0	Bloemfontein, Ceres, Cape Town, Dunoon, Fishoek, George, Green Point, Gugulethu, Hout Bay, Langa, Khayelitsha, Knysna, Phillipi, Stellenbosch, Strand
PENDING	-	171 127	1077	1048	0	29	
GRAND TOTALS	3 577 773	822 576	192 182	178 761	10 713	2 708	

ACKNOWLEDGEMENTS

- The epidemiological and surveillance functions continue because of the strong partnership between the following stakeholders;
- World Health Organization with epidemiologists, biostatisticians, and technical support
- The National Institute for Communicable Diseases (NICD) provided the province with epidemiologists and technical support
- The data analyst from TB/HIV Care has supported data management, mapping of the cases and other functions in the department
- Right to Care assists in mapping the cases in different areas in the province
- Centre for Disease Control (Atlanta-Pretoria) provided the Department with an epidemiologist and a statistician to support the province
- The Department of Health, both the National and Provincial Department of Health re-purposed the employees to focus on the control and prevention of the pandemic
- Laboratories; National Health Laboratory Services, Pathcare and Ampath for prompt and regular reporting of SARS-Cov-2 cases.

Appendix 1: Incidence rate by Eastern Cape Districts and week of specimen collection as of 31 December 2020 Week 2 is interim data is incomplete and has been excluded.

