



## Schools' Infrastructure Buyambo

### In this edition

- 2 From the Editor
- 3 Thriving despite the odds  
Profile: Storms River Primary
- 4 We will move with speed to provide  
quality infrastructure
- 5 Giving dignity to the Lehewini Community  
Profile: Ntlelelengwane Junior  
Secondary School
- 7 Spotlight on...  
Amathole Education District
- 8 How can we help with your infrastructure  
queries?



**Let's Grow South Africa. Together.**

# From the Editor



Welcome to the November edition of Sakh'isidima news. After some silence we are back in full swing to bring you news on the schools' infrastructure programme across the Eastern Cape.

In this edition we profile a number of projects completed through the DoE Schools' Infrastructure programme as well as the ASIDI programme. Ntlelelengwane Junior Secondary school in the Chris Hani East Education district which was officially handed over to the Luhewini Community by the MEC for Education, Fundile Gade on 6 September. Thembisa and Zamekile Primary Schools, delivered as part of ASIDI was also officially handed over in October and November 2019, respectively.

Construction work on the beautiful Storms River Primary in the Sarah Baartman Education District has also been completed and we include a profile on this R51.1 million project.

As a regular feature we will be placing the spotlight on each of the 12 education districts. In this edition we zoom into Amathole East and West bringing you key facts and figures about the education and schools' infrastructure landscape in these districts.

As a Department we are constantly looking at better ways to serve the citizens of our province. The recently launched Sikuncede Njani? customer application is aimed at doing just that. Read about how you can access the app and encourage our various constituents to use the app for easy access to the Department.

We hope you enjoy this edition. In our quest to bring you news and stories that are relevant and insightful, we would encourage your views and insights, so kindly drop us an email at [infrastructurenews@ecdod.gov.za](mailto:infrastructurenews@ecdod.gov.za) and let us know what's happening in your area.

## Official handover of ASIDI Projects

Zamekile Primary School in OR Tambo Education District, was officially handed over by the Chairperson of the Portfolio Committee on Education, MPL Mpumelelo Saziwa on 1 November 2019, on behalf of the MEC for Education.



Thembisa Primary in Chris Hani West Education District, was officially handed over by the MEC for Education, Fundile Gade on 25 October 2019.





# Thriving despite the odds

## Profile: Storms River Primary

Storms River Primary is a full service primary school located at the far western side of the Eastern Cape overlooking the Tsitsikamma Mountains. The school is situated in the Koukamma municipality, next to the N2, in the heart of the picturesque Tsitsikamma. It is surrounded by an indigenous forest and is 15 km away from the biggest marine protected area, the Tsitsikamma National Park. It is also 20 km away from the world's highest bungy jumping spot at the Bloukrans Bridge.

The school evolved from two church schools in Goesa which were established in 1939. In 2000, a new community was established, and the school moved to Storms River. For 18 years the school operated, initially in four RDP houses, and later in wood structures with no ablution facilities for the teaching staff.

Construction of the school's infrastructure project started in 2016 and in June 2018 part of the new building was occupied. The new school, valued at over R51 million, boasts nine classrooms, a Grade R unit, administration block, kitchen with dining area, and a media centre. The school also has a standard size netball court, and rugby, soccer and athletic facilities.

Even though this is a no-fee paying school, the whole Grade 7 class of 2013 sat for the 2018 matric exams and achieved a pass rate of 98%. The school serves a community with low income levels and most people are employed as labourers in the forestry industry, by the local tourism sector, or the local sawmill.

Learners benefit from the National School Nutrition Programme and the school's thriving vegetable garden.

The school offers a healthy extracurricular programme which also includes cross country running, rugby, netball, cricket and mini-cricket, athletics, chess and soccer.

### Project quick facts

<b>District:</b>	Sarah Baartman Education District, Cacadu District Municipality
<b>Emis No:</b>	200100749
<b>Implementing Agent:</b>	Department of Public Works
<b>Allocated budget:</b>	R 51.1 million
<b>Construction Period:</b>	33 months
<b>Project completed:</b>	January 2019



Province of the  
**EASTERN CAPE**  
PUBLIC WORKS



# We will move with speed to provide quality infrastructure

In his 2019/2020 Policy Budget Speech, the new MEC for Education, Mr Fundile Gade reiterated the message of Premier Mabuyane when he stated that “We will move with speed to reach out to as many learners as possible in the provision of quality infrastructure.”

The MEC, however, highlighted the fact that the province faced significant schools’ infrastructure backlogs and may need to explore other options, such as prioritisation of hostels, to support a quality learning environment. It is believed that the strategy of establishing more hostels near schools, will not only have an impact on improved learner performance, but will also address safety issues. The Department’s long-term plan is to establish hostels geographically to service a cluster of schools. Circuit Landscape Plans which includes the proposed locations of such hostel infrastructure have been developed and the Department is determining the cost of placing hostels in more than 40 schools earmarked to improve the Provincial NSC results.

The MEC stressed the importance of collaborative partnerships in the delivery of education infrastructure and welcomed the establishment of the Eastern Cape Infrastructure Coordinating Council by Premier Mabuyane. He also highlighted the importance of the reconfigured Department of Public Works in the reorganisation and repositioning of the education infrastructure delivery function.

“We will continue to work together – as government, labour, business, civil society and communities – to provide learners with opportunities to become productive and responsible citizens through quality basic education. The education of our children is a societal matter that will require the active participation of multiple stakeholders.”

The MEC called on Eastern Cape citizens to “unite to create a conducive teaching and learning environment for our children. The government cannot do this alone. Education is a societal matter that needs all of us to be dedicated, always committed and vigilant. So let us all work hard for the future of our children.”



*Mr Fundile Gade  
MEC for Education, Eastern Cape*

Funding for the ongoing infrastructure program in the province is allocated from the Education Infrastructure Grant (EIG), which includes the maintenance and rebuilding of existing infrastructure.

**R4.834 bn**  
**Total allocation over three years**  
Medium Term Expenditure Framework (MTEF)

**R1.585 bn**  
**2019/20 allocation**

*“Transforming and improving education in this vast and beautiful Eastern Cape is a multi-faceted and complex undertaking requiring systemic transformation at all levels and in all sectors.”*



# Giving dignity to the Luhewini Community

## Profile: Ntlelelengwane Junior Secondary School

6 September 2019 was a day of celebration for the Luhewini community as the MEC for Education, Fundile Gade, officially handed over the brand new Ntlelelengwane Junior Secondary School valued at R24.4 million.

The school is situated in Luhewini, a village in the Engcobo Local municipality which falls within the Chris Hani East Education District.

Ntlelelengwane Junior Secondary School was established in 1928 as a mud structure built by the community. In 1980, ten prefabricated classrooms were donated by the Department. Disaster struck in 2007 when the classrooms were destroyed by fire and the Department again heeded the call by providing more prefab classrooms. A project to build a brand-new school was registered in 2013 and was completed in the 2018/19 financial year.

The new school, framed by a beautiful mountainous backdrop, boasts 14 classrooms; a library / media centre; admin block (office, staff room, kitchen); hall; Grade R classrooms and separate ablution facilities; fencing and paving.

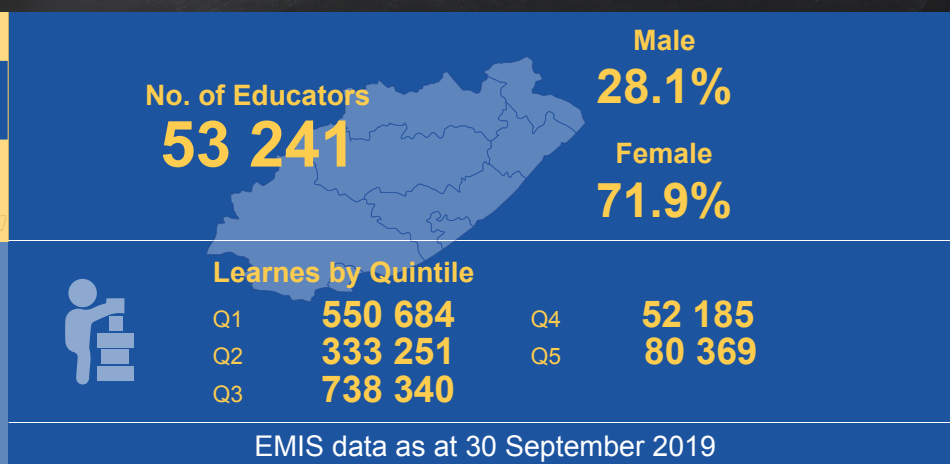
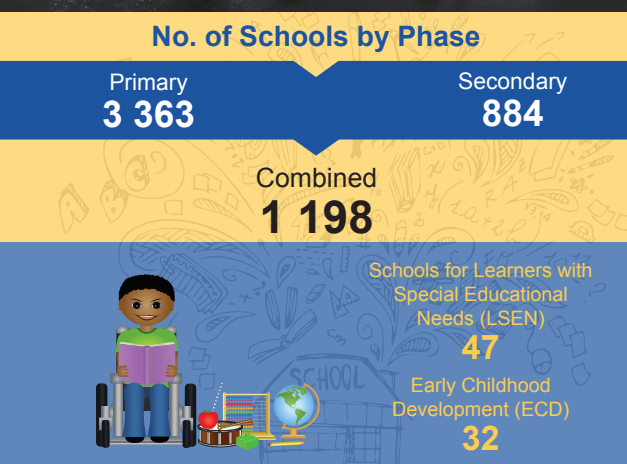
The 406 learners and 12 educators which make up the small community can now continue their job of learning and teaching with dignity and pride.

### Did you know?

According to official data as at 2011, the total population of Luhewini was 304, with 58 households and an average household size of 5.1 people. 42,9% of the population were aged 0-14 and this community had no basic services. (Source: Census 2011 - Statistics South Africa).



# Eastern Cape Schools Overview 2019



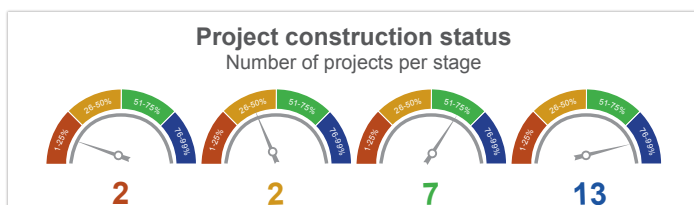
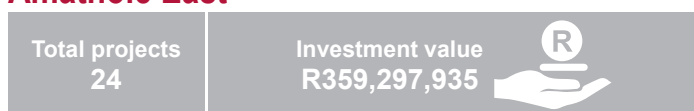
## Amathole District Municipality Projects under construction (as at October 2019)

**Total projects**  
**38**

**Investment value**  
**R657,794,673**



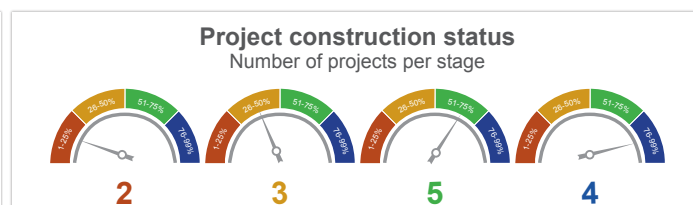
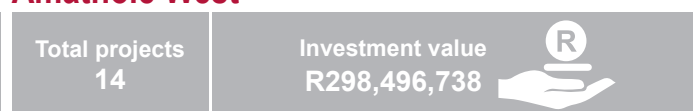
### Amathole East



**Local Municipality**  
Mnquma  
Mbashe

**No. of projects**  
15  
9

### Amathole West



**Local Municipality**  
Amahlathi  
Ngqushwa  
Nkonkobe  
Nxuba

**No. of projects**  
3  
1  
9  
1





# Amathole Education District

## Amathole East

Number of schools



733

Number of learners



154 464

Number of educators



4 585

Number of classes



6 626

### Did you know?

- This district has 469 primary schools.
- The highest number of learners are in Quintile 1 schools (72 166).
- There is 1 school in this district for Learners with Special Educational Needs.
- Over 70,32% of educators are female.
- There are 144 327 learners in public schools.
- The highest number of learners enrolled in this district are in Grade 1 (14 425).

## Amathole West

Number of schools



411

Number of learners



78 820

Number of educators



2 498

Number of classes



3 892

### Did you know?

- 59,63% of learners are enrolled in the Primary Phase.
- There are 92 Secondary and 16 Combined schools in this district.
- The learner to educator ratio is 30:1.
- There is an average of 20 learners per classroom. In combined schools this ratio is 33:1.
- The total Grade R enrolment in this district is 6 028.
- 3595 Grade 12 learners are enrolled this year.

#### Infrastructure contacts

##### Amathole East

Chief Works Inspector, Ms Ntombi Ngcukana

**Mobile:** 083 386 0562

**Email address:** ntombekaya.ngcukana@ecdoe.gov.za

##### Amathole West

Chief Works Inspector, Ms Nolitha Masela

**Mobile:** 083 991 3662

**Email address:** nolitha.masela@ecdoe.gov.za

#### Department of Education District offices

##### Amathole West (Fort Beaufort)

Cape College Building, Healdtown Road, Fort Beaufort, 5720

**Tel:** 046 645 7802

##### Amathole East (Butterworth)

Butterworth College, Mission Admin Area, Butterworth, 4960

**Tel:** 047 401 7700

# Customer care

Sikuncede Njani? How can we help with your infrastructure queries?



**Call centre**  
**080 1212 570**

Reporting Infrastructure issues is as easy as 1, 2, 3 with the launch of the Sikuncede Njani? a customer service application developed by the Eastern Cape Department of Education. You can now communicate directly with the department on several matters, from infrastructure issues; reporting shortages of Teacher Support Materials; and finding schools in your area, amongst others.

The app uses mobile technology to bring about administrative efficiency and enhance communication with our stakeholders. It will assist us in improving service delivery through efficient and timeous feedback to our customers and reduce the need for citizens to travel to the Department to resolve issues.

The app also allows for early detection of problems through the provision of real time communication and provides statistics for tracking and improved planning.

## Report your issues in three easy steps.

Download the App on Google Play Store or Apple App store

Step 1: Select "Report an issue" on the home screen

Step 2: Under "infrastructure issues" select the type of issue you would like to report

Step 3: Add photos and details relating to the issue you are reporting; and your contact details so that you are kept informed of progress. Submit.



You can also dial \*134\*2570# to make use of USSD (Unstructured Supplementary Service Data)

The Minister of Basic Education, Angie Motshekga visited the new DoE call centre on 3 October 2019 for a walk-through and presentation on the various measures taken by the Department to facilitate better communication with citizens.



## What's Happening November 2019

5 - 8 November 2019  
Executive Review Meetings (ERM)

4-28 November 2019  
Circuit School Landscape Plan (CSLP) Advocacy Campaign