

Daily Epidemiological Report for SARS-Cov_2

Report No. 300

Date Issued 28 Jan. 2021 @22h45

1. PURPOSE

The report provides a descriptive analysis of SARS-Cov-2 related cases and deaths, which were detected, reported and investigated in the Eastern Cape Province, as on 28 Jan. 2021.

2. HIGHLIGHTS

a. As on the 28th January 2021, **267** new SARS-Cov-2 cases, with a majority of the newly reported cases were reported in Buffalo City Metro (**18.7%**), followed by OR Tambo (**15.4%**) and Chris Hani (**13.9**) districts.

- Active Cases: Of the **3560** current active cases, majority are in Chris Hani (**30.2%**), followed by Joe Gqabi (**19.2%**) and Amathole (**15.7%**).
- The provincial recovery rate was **92.7%**. Only two districts (Chris Hani and Joe Gqabi) reported recovery rates that are below 90%.
- From the 5th of January 2021 to date, testing rate has increased while the percentage of specimens testing positive has decreased.

b. **Covid-19 related deaths:**

- In the last 24 hours, **150** new deaths were reported with **28** of the deaths occurring in the last 48 hours (DATCOV).
- **Clinical audits and back capturing of deaths into DATCOV have identified an increase in the number of deaths especially in between June and August 2020.**

c. **Hospitalizations and outcomes:**

As on 27 January 2021, there were **2085** currently admitted cases, 69.9% in the public sector and 30.1% in the private sector. More than 86.5%, were admitted in the general ward, 9.8% in ICU and 3.6% in High Care. About of 33.8% of the current admissions were on oxygen and 5.1% were on ventilation.

d. **Healthcare workers:**

The number of healthcare workers who tested positive for SARS-Cov-2 was **10,828** and **247** demised (the case fatality rate was 2.3%).

- Nurses were the most affected, followed by doctors and clinical associates. **There is an increase in the positivity rate among healthcare workers in the metros.**

Conclusion

- The burden of disease due to SARS-Cov-2 appears to be declining but still remains high in some areas of the province.
- Just over half of the active cases are in Chris Hani, Joe Gqabi, OR Tambo and Amathole.
- Five districts report a recovery rate, which is above 90% and 2 districts, Chris Hani and Joe Gqabi, report recovery rates less than 90%.
- There is a need to strengthen identification of suspected cases, collection specimens for COVID-19 testing, isolation of cases and quarantining of contacts. Promoting compliance to non-pharmaceutical interventions remains a central strategy in preventing further spread of infections in communities.

3. SARS-Cov-2 CASES & DEATHS

3.1. Summary of all cases and deaths

On the 28th of January 2021, **267** new cases and **150** deaths (**28** occurred in the last 48 hours). The cumulative number of cases and deaths were **191,327** and **10,379** respectively.

	No. of cases	New Cases	Total	%	Deaths	New Deaths		Total	CFR
						*Newly Repo	**Newly occu		
Male	75514	109	75623	39.5	4405	37	17	4459	5.9
Female	115349	158	115507	60.4	5824	85	11	5920	5.1
Unknown	197	0	197	0.1	0			0	0.0
Total	191060	267	191327	100.0	10229	122	28	10379	5.4

* Deaths which occurred more than 48 hours ago ** Deaths which occurred within the last 48 hours of reporting

The case fatality rate (CFR) was reported as 5.4%, with a CFR of 5.9% among males and 5.1% among the females. Clinical audits in hospitals to provide valuable information to estimate the burden of disease.

District	Cases	New Cases	Total Confirm	Recoveries	Deaths	New Deaths		Total Deaths	CFR%	Recovery Rat	Active Cases
						*Newly Repo	**Newly occurred				
Alfred Nzo	7767	13	7780	7111	333	13	1	347	4.5	91.4	322
Amathole	18933	28	18961	17370	1018	10	3	1031	5.4	91.6	560
BC Metro	38140	50	38190	35740	2216	26	4	2246	5.9	93.6	204
Chris Hani	19059	37	19096	16590	1411	12	9	1432	7.5	86.9	1074
Joe Gqabi	7136	35	7171	6158	324	2	2	328	4.6	85.9	685
NM Metro	54788	32	54820	51610	3052	37	5	3094	5.6	94.1	116
OR Tambo	22068	41	22109	20625	1093	7	4	1104	5.0	93.3	380
Sarah Baar	21516	29	21545	20541	782	15	0	797	3.7	95.3	207
Imported	595		595	595	0			0	0.0	100.0	0
Unspecifie	1058	2	1060	1048	0			0	0.0	98.9	12
E. Cape	191060	267	191327	177388	10229	122	28	10379	5.4	92.7	3560

* Deaths that occurred more than 48 hours ** Deaths which occurred within the past 48 hours of reporting

In the past 24 hours 267 new cases were reported; Buffalo City Metro (18.7%), OR Tambo (15.4%), Chris Hani (13.9%), Joe Gqabi (13.1%), Nelson Mandela Metro (12%), Sarah Baartman (10.9%), Amathole (10.5%) and Alfred Nzo (4.9%).

Of the 3560 active cases, Chris Hani accounted for 30.2%, Joe Gqabi (19.2%), Amathole (15.7%), OR Tambo (10.7%), Alfred Nzo (9%), Sarah Baartman (5.8%), Buffalo City Metro (5.7%) and Nelson Mandela Metro (3.3%).

The overall provincial recovery rate was 92.7%. Six districts reported a recovery rate greater than 90% and 2 districts (Chris Hani -86.9% and Joe Gqabi -85.9%) reported recovery rates less than 90%.

3.2. Newly diagnosed cases

Figure 1 provides the 7-day moving average of newly reported cases by district comparing a period of weeks, 13th-19th and 20th – 26th January 2021.

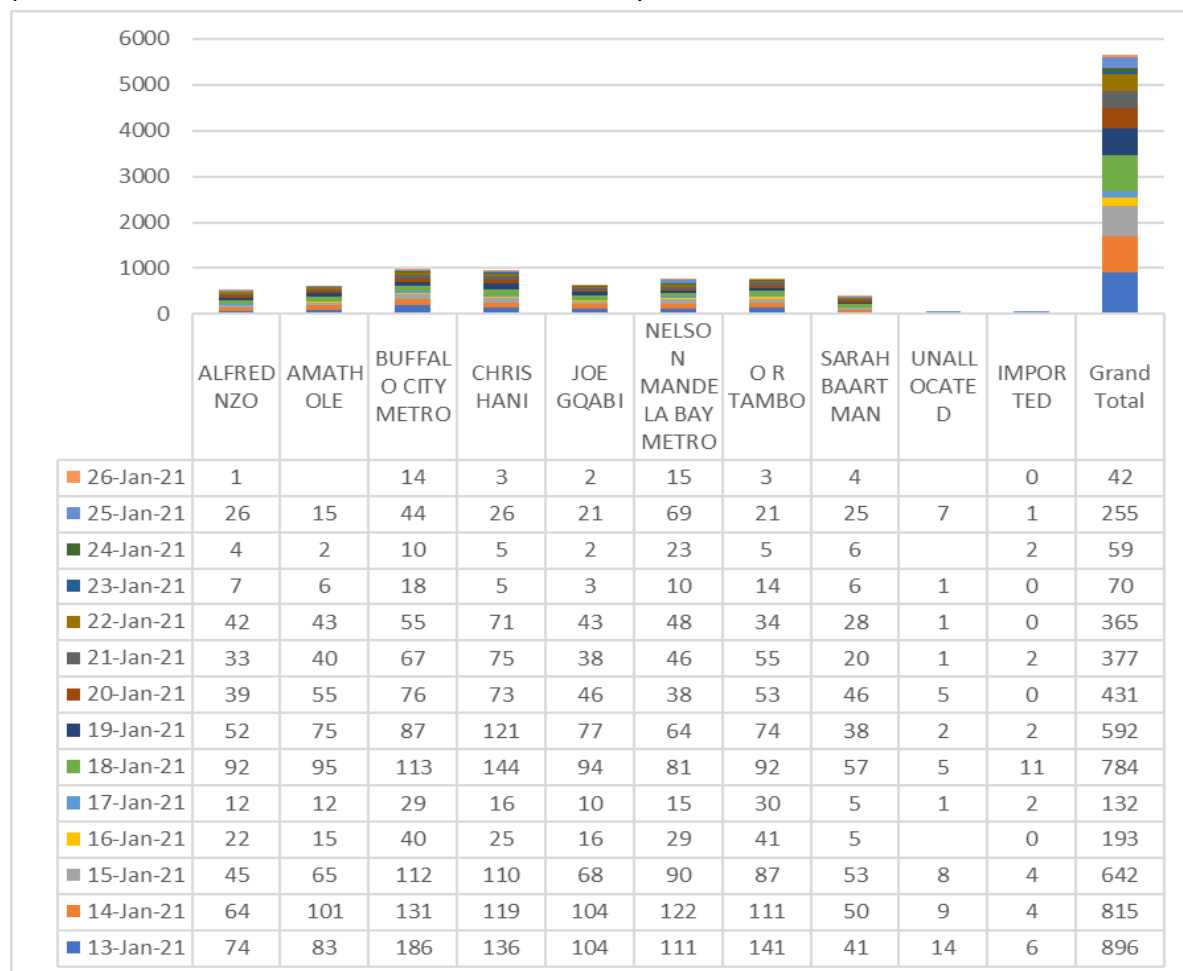


Fig. 1. 7-day moving average of SARS-Cov-2 cases by date of collection, as on 28th Jan. 2021

4. SARS-Cov-2 LAB TESTS & RESULTS

4.1. *Test Results by Laboratory

The number of specimens tested by public and private sector laboratories was 837,276. About 63.1% of the tests were done in the public sector and 36.9% in private sector laboratories.

	Private	Public	Total	%
Alfred Nzo	2449	26365	28,814	3.4
Amathole	8339	66922	75,261	9.0
BC Metro	30821	90964	121,785	14.5
Chris Hani	6866	52284	59,150	7.1
Joe Gqabi	1281	24749	26,030	3.1
NMB Metro	35290	121866	157,156	18.8
OR Tambo	16631	64560	81,191	9.7
Sarah Baartman	3764	80667	84,431	10.1
Unclassified	203458	0	203,458	24.3
Eastern Cape	308899	528377	837,276	100.0

4.2. *Antigen Testing

The total number of specimens tested using the antigen testing method, was 52,892 with a 14% positivity rate.

	Negative	Positive	Total	Percentage (%)	Positivity Rate (%)
A Nzo	3768	897	4665	8.8	19.2
Amathole	2972	591	3563	6.7	16.6
BC Metro	6907	1557	8464	16.0	18.4
Chris Hani	5710	1093	6803	12.9	16.1
Joe Gqabi	1821	437	2258	4.3	19.4
NM Metro	13878	1243	15121	28.6	8.2
OR Tambo	6686	1296	7982	15.1	16.2
Sarah Baartman	3755	281	4036	7.6	7.0
Total	45497	7395	52892	100.0	14.0

The Nelson Mandela Metro district accounted for 28.6%, followed by Buffalo City Metro (16%), OR Tambo (15.1%), Chris Hani (12.9%), Alfred Nzo (8.8%), Sarah Baartman (7.6%), Amathole (6.7%), and Joe Gqabi (4.3%). Proportion of specimens testing positive for SARS-Cov-2 using the Rapid Antigen Method was 14%, with Alfred Nzo (19.6%), Joe Gqabi (19.4%), Buffalo City Metro (18.4%), OR Tambo (16.2%) and Amathole (16.6%).

4.3. *Tests by age group and sex

The following figure 3 provides the number of tests done by age group. The economically active age group (20 to 59 years) accounted for the majority of tests conducted (63.6%).

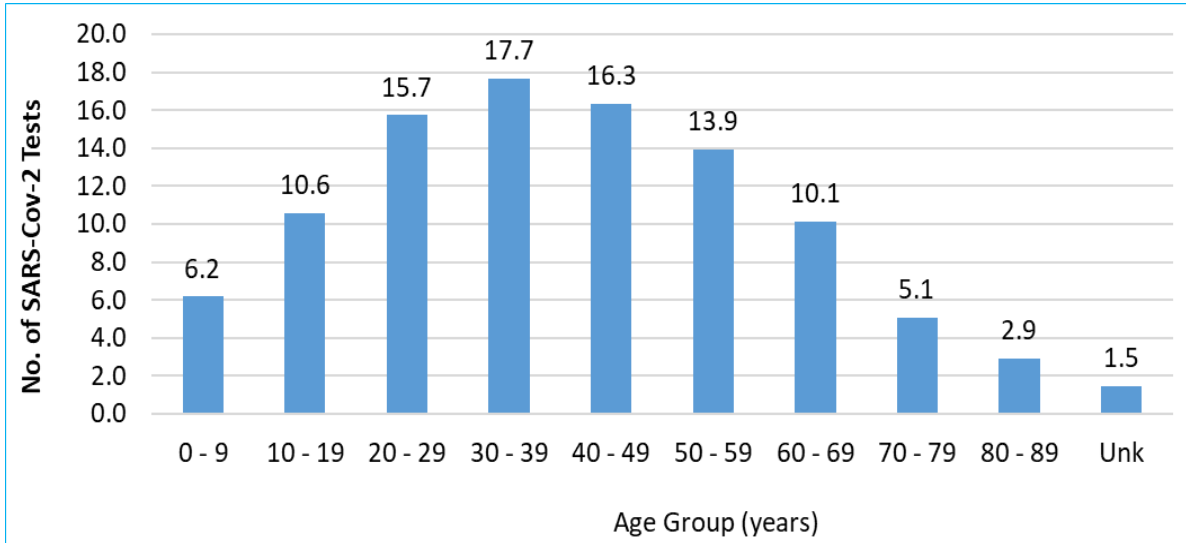


Fig. 3. Public sector SARS-Cov-2 tests by age group, as on 28th Jan 2021

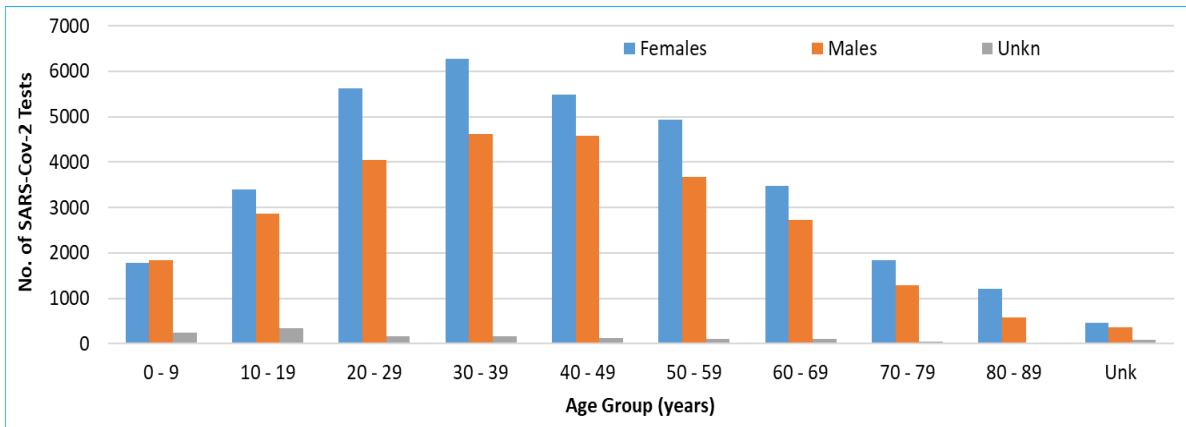
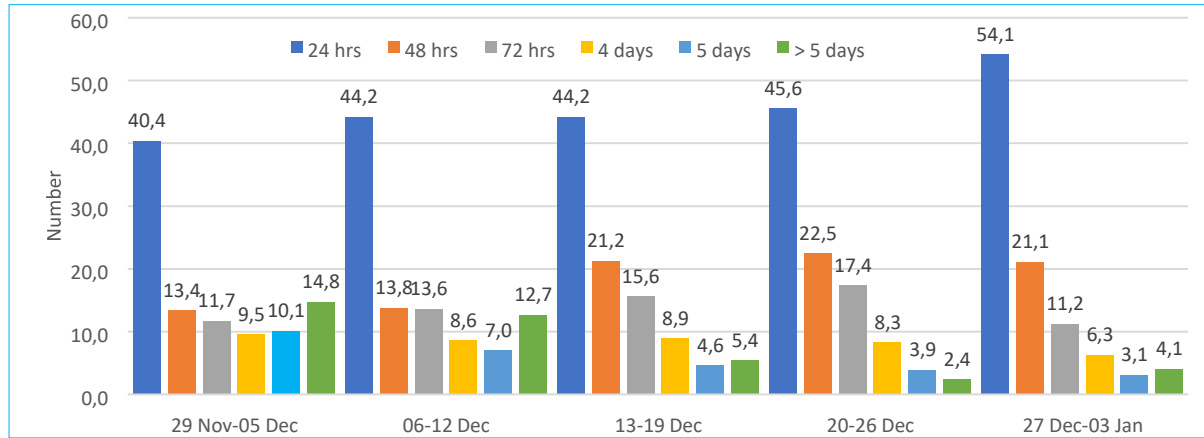


Fig. 4. No. of SARS-Cov-2 public sector tests by age group and gender, as on 28th Jan 2021

Figure 4 provides the number of tests conducted in the public sector by age group and gender between the 30 November 2020 and 28 January 2021. The female population accounted for 34,500 (55.2%) and male population accounted for 26,565(42.5%) of the positive tests. Less than 3% (1,430) lacked information on gender.

4.4. *Turnaround Time

The turnaround time is used as a key performance indicator of the laboratory performance. The table below provides the turnaround time in both public and private laboratories that was reported by NICD.



*The data for TAT by the laboratory is only updated when available

Fig. 5. Turnaround time for positive results by week as on 03rd Jan. 2021

Over 86% of the test results were available within 72 hours or less compared to 85.5% in the previous week, a decrease of 1.2%. Fifty-four percent of the results were available within 24 hours, a 18.6% increase compared to the previous week.

4.5. *The 7-day moving average of SARS-Cov-2 tests & positivity rate

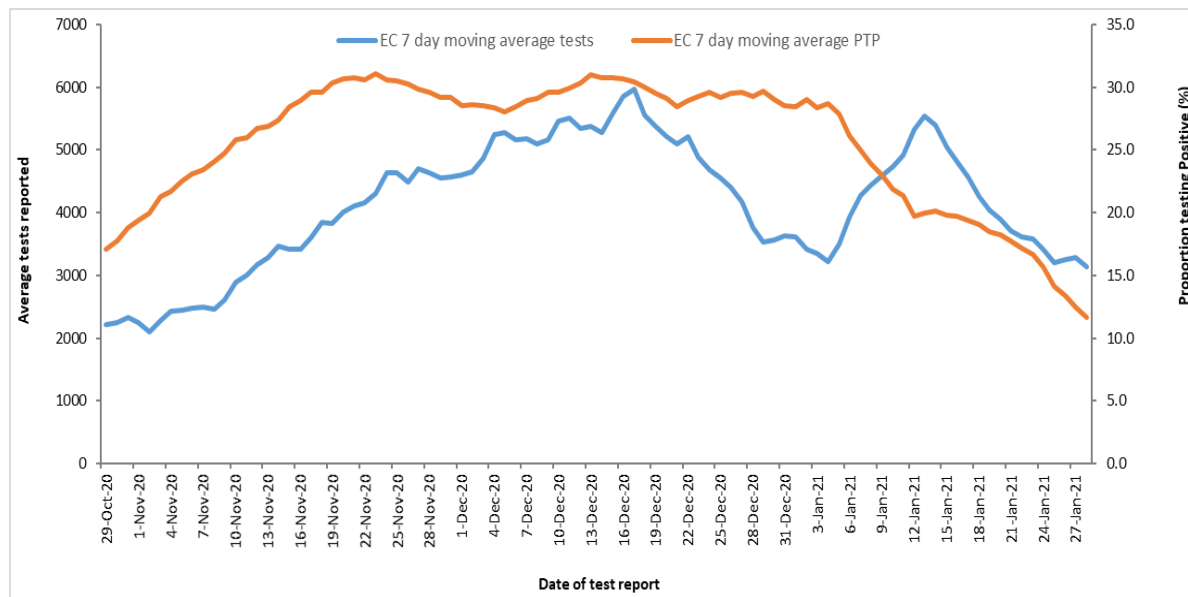


Fig. 6. 7-day moving average for laboratory tests and positivity rate, as on 28th Jan. 2021

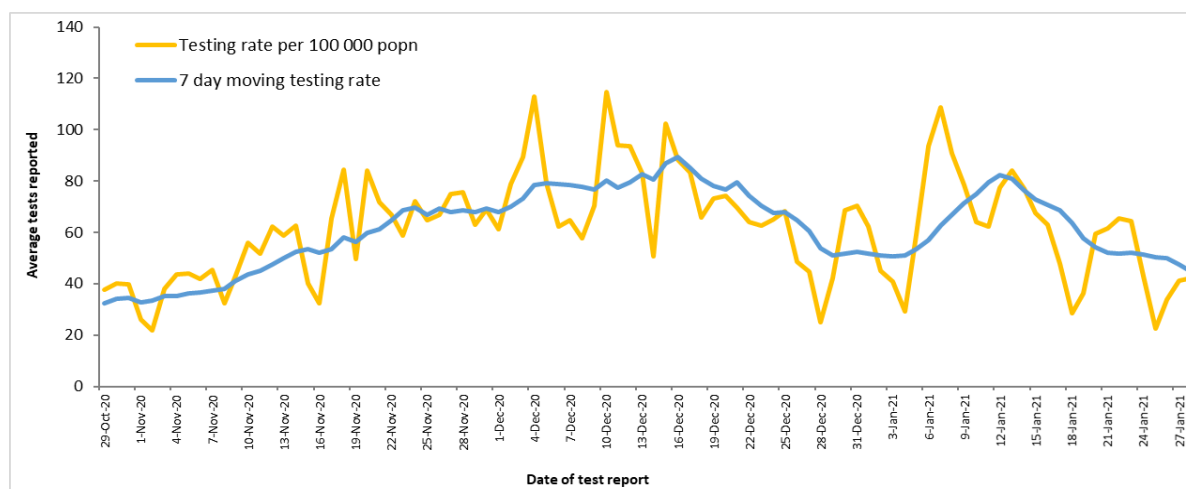


Fig. 7. The 7-day moving average for tests and testing rate, as on 28th Jan. 2021

The seven-day moving average and testing rate has decreased from 52 tests conducted per 100,000 on 22 January to 45 tests per 100,000 on 28 January 2021.

5. ACTIVE CASES, INCIDENCE & POSITIVITY RATE

5.1. Active SARS-Cov-2 cases and the cumulative positivity rate

District	Population Estimates	No. of tests	SARS-Cov-2 Cases (ALL)	Active SARS-Cov-2 Cases	SARS-Cov-2 per 100,000 (Active)	Positivity Rate
Alfred Nzo	827826	28,218	7780	322	38.9	27.6
Amathole	798067	73,592	18961	560	70.2	25.8
BC Metro	798798	120,571	38190	204	25.5	31.7
Chris Hani	733743	58,033	19096	1074	146.4	32.9
Joe Gqabi	343075	25,249	7171	685	199.7	28.4
NM Metro	1210803	155,615	54820	116	9.6	35.2
OR Tambo	1520922	80,247	22109	380	25.0	27.6
S Baartman	480223	83,452	21545	207	43.1	25.8
Imported			595	0		
Unspecified		171,127	1060	12		
Eastern Cape	6713457	796104	191327	3560	53.0	24.0

The province reported 53 active cases per 100 000 population as of 28 January 2021. The cumulative positivity rate was 24%. Three districts reported a cumulative positivity rate above 30%. The Joe Gqabi and Chris Hani districts reported the highest number of active cases; 146.4 and 199.7 active cases per 100,000 population respectively for the past 7 days. The Amathole district reported the third highest at 70.2 active cases per 100,000 population followed Sarah Baartman (43.1 per 100,000). Five districts (Alfred Nzo, Sarah Baartman, OR Tambo, Nelson Mandela Metro and Buffalo City Metro) had less than 50 active cases per 100,000 population.

5.2. Incidence of SARS-Cov-2 cases

The incidence of SARS-Cov-2 is above the hotspot threshold (10 cases per 100 000 population) in all districts. Since week 2 there has been a decrease in incidence in all districts. The past two weeks the province observed a decrease following a rise observed in week 52 (20 to 26 December 2020).

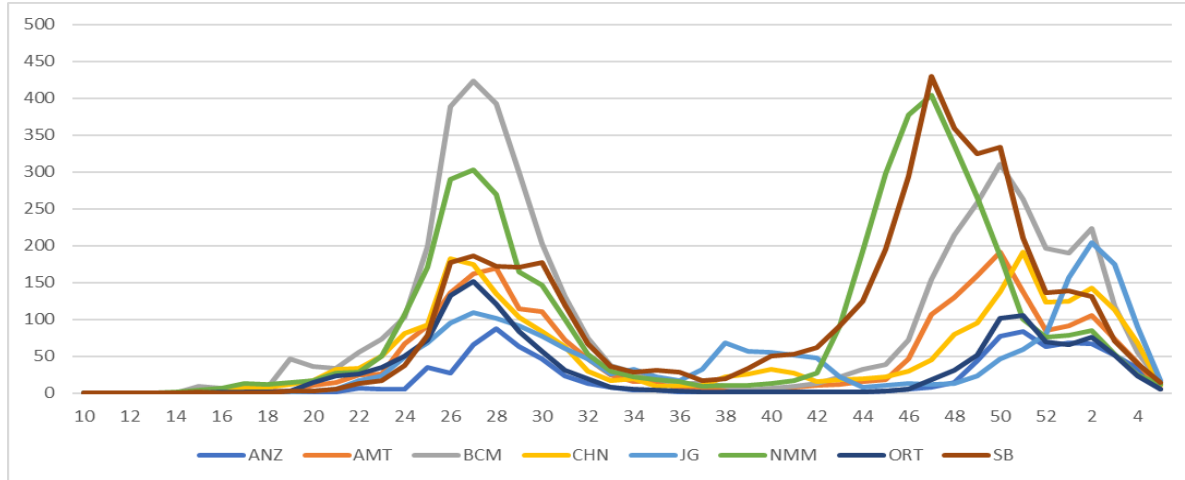


Fig. 8. Incidence of SARS-Cov-2 cases by epidemiological week, as on 28th Jan 21

In the past 7 days, the incidence of SARS-Cov-2 decreased from 57.7 cases per 100,000 on the 22nd to 53 per 100,000 on the 28th January (Figure 9). Two districts reported a minimum of >100 active cases per 100,000 populations, and 6 had less than 100 per 100,000 active cases.

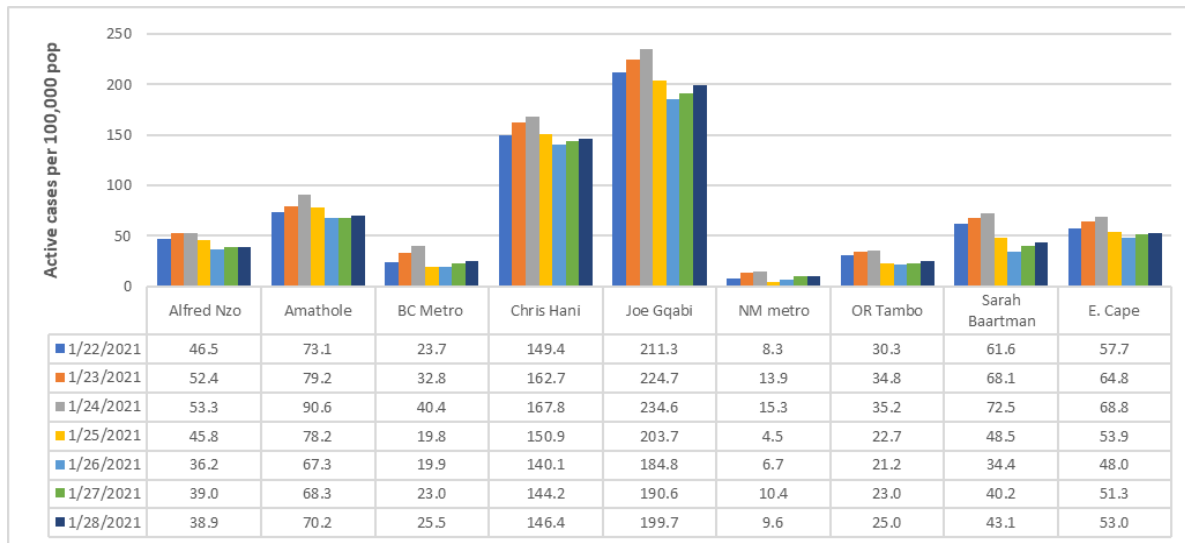
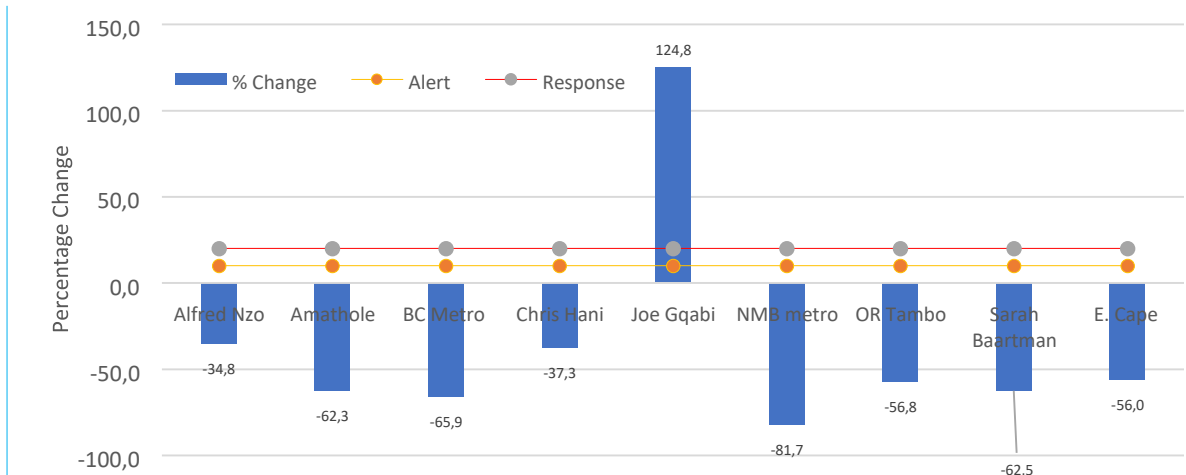


Fig. 9. Incidence of active SARS-Cov-2 (per 100,000) by district date, as on 28thJan. 2021

In the last 14 days period, the number of active cases have decreased by 56,0% from 20th December to 02nd January 2021 (Figure 10). Seven districts have a negative percentage change of the active cases, except for Joe Gqabi, which has more than 20% increase in the number of new cases.



*The data for testing by the laboratory is only updated when available

Fig. 10. Percentage change of the incidence of active SARS-Cov-2 cases, 20th Dec -02nd Jan 2021

5.3. Recovery Rate (%)

The figure below provides the recovery rate over a period of 7 days for each district.

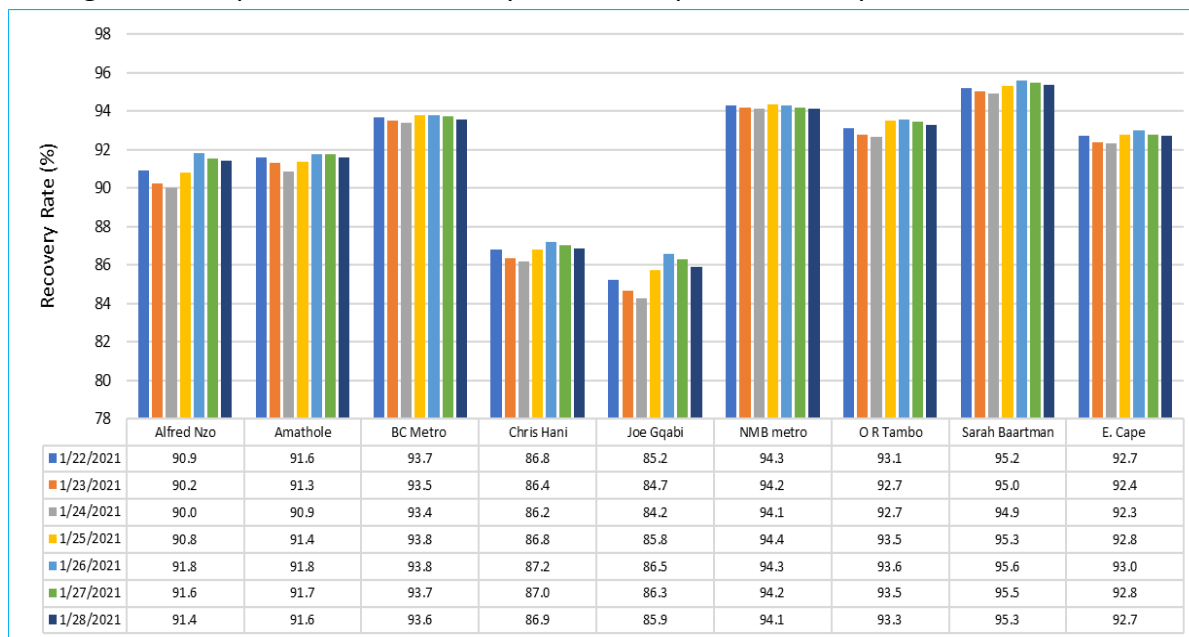


Fig. 11. Recovery Rate (%) by districts, as on the 28th Jan. 2021 (N=177,388)

The provincial recovery rate remained above 90% over the past 7 days. Six districts reported a recovery rate above 90%. The Chris Hani and Joe Gqabi districts reported a recovery rate of 86.9% and 85.9% respectively.

5.4. Mapping of active cases, recoveries and deaths

The map shows the distribution of active cases, recoveries and deaths related to SARS-Cov2 in the province.

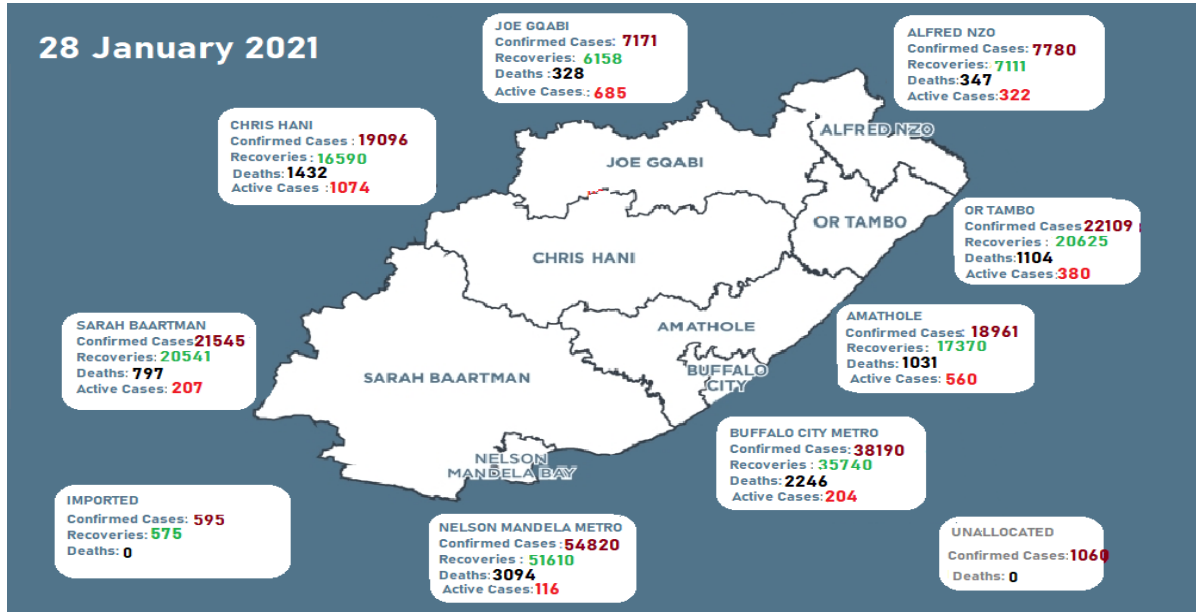


Fig. 12. Number of Covid-19 cases, recoveries and deaths, as on 28th Jan. 2021

6. SARS-COV-2 CASES AND 7-DAY MOVING AVERAGE

The graph below depicts the total number (including cumulative) of cases and the 7-day moving average.

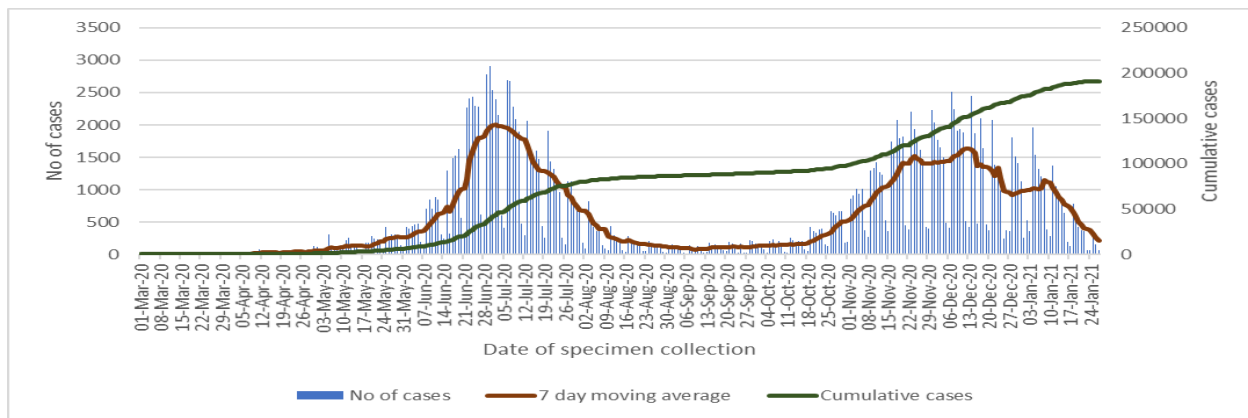


Fig. 13. The 7-day moving average for COVID-19 cases by date of specimen collection (28th Jan. 2021)

The number of daily newly diagnosed cases increased from the second half of October and peaked in the mid-December, and then decreased until to date. However, the cumulative number continues to show an upward trend. The second peak of the pandemic appears to be approaching the level of the first peak.

7. SARS-Cov-2 RELATED MORTALITY

7.1. SARS-Cov-2 related deaths

The table below provides the total number of cases, deaths and mortality rate by the month.

Month	Cases	Percent (%)	Deaths	Percent (%)	Case Fatality Rate (%)	Mortality Rate (per 100,000)
March	13	0.0	1	0.0	7.7	0.0
April	638	0.3	34	0.3	5.3	0.5
May	3282	1.7	283	2.7	8.6	4.2
June	23783	12.4	1020	9.8	4.3	15.2
July	50289	26.3	2005	19.3	4.0	29.9
August	8279	4.3	654	6.3	7.9	9.7
September	2991	1.6	210	2.0	7.0	3.1
October	8625	4.5	284	2.7	3.3	4.2
November	33706	17.6	1614	15.6	4.8	24.0
December	42469	22.2	2566	24.7	6.0	38.2
January (2021)	17252	9.0	1563	15.1	9.1	23.3
Unknown	0	0.0	145	1.4		2.2
Total	191327	100	10379	100	5.4	155

The month of December accounts for the second highest proportion of cases (22.2%) and the highest proportion of SARS CoV-2 related deaths (24.7%). The Case Fatality Rate was highest in May 2020 (8.6) but has since been surpassed by January 2021 reporting a CFR of 9.1%.

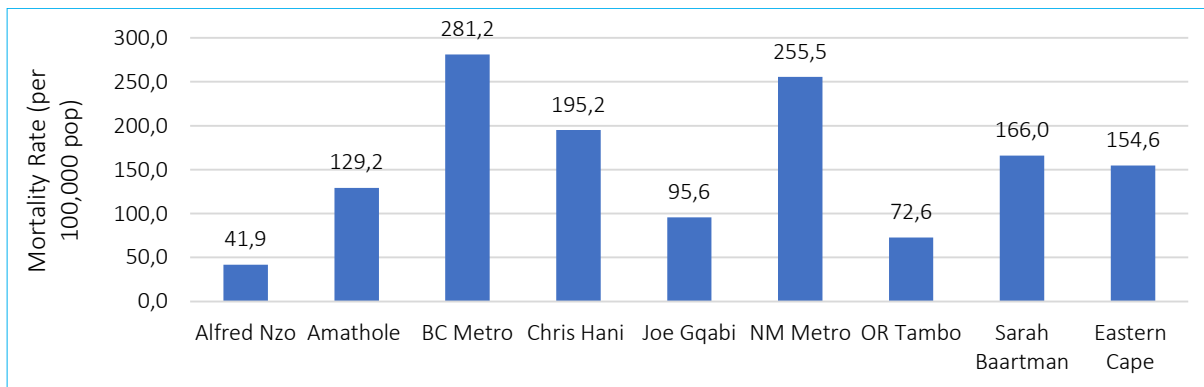


Fig. 14. SARS-Cov-2 related mortality per 100,000 by district, as on 28th Jan. 2021

The mortality rate related to SARS-Cov-2 was 154.6 deaths per 100,000 populations. The highest mortality rate was observed in Buffalo City Metro (281.2 deaths per 100,000) followed by Nelson Mandela Metro (255.5 deaths per 100,000), Chris Hani (195.2 per 100,000) and Sarah Baartman (166 per 100,000).

7.2. Number of reported SARS-Cov-2 related deaths

The figure below depicts the daily deaths and the cumulative number of deaths.

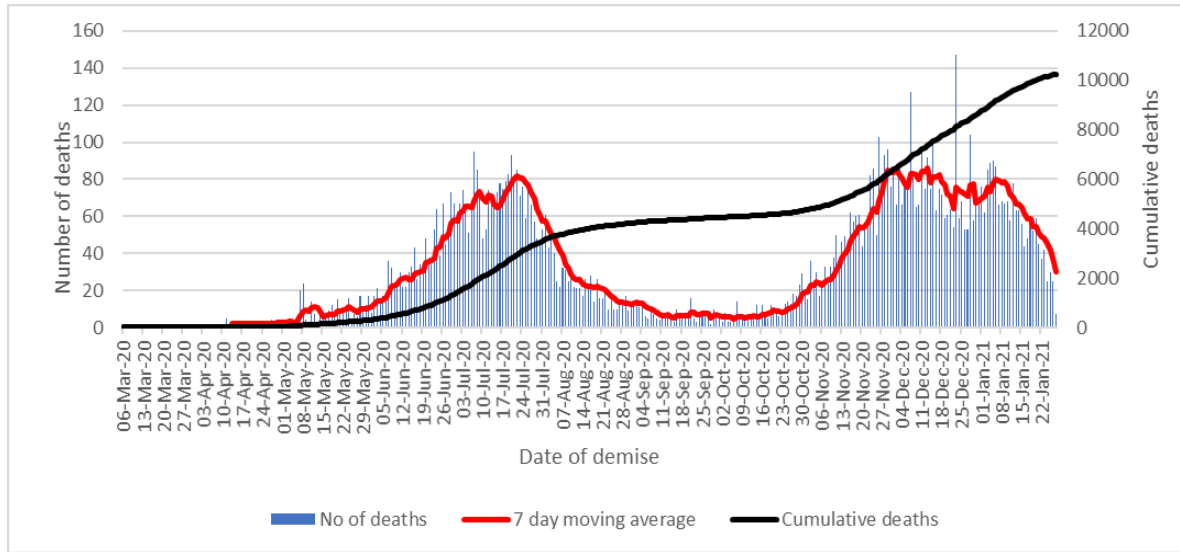


Fig. 15. Daily and cum. SARS-Cov-2 related deaths by date of demise, as on 28th Jan. 2021

The number of daily deaths increased since May 2020 and peaked on the 20th July 2020, then rapidly declined in August and October. In last week of October, the number of deaths increased and peaked in mid-December. The cumulative number of deaths continues to increase until to date.

7.3. Case Fatality Rate by district

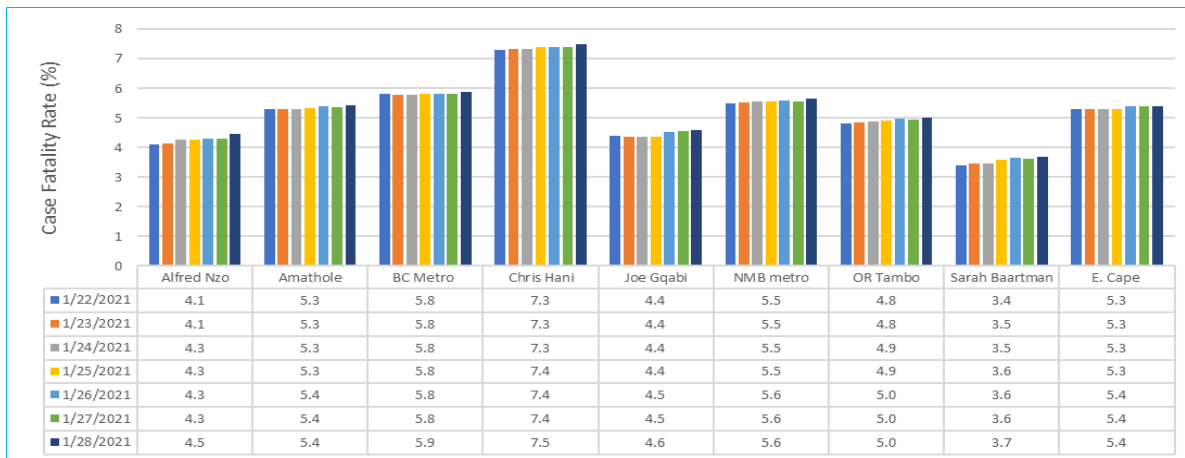


Fig. 16. SARS-Cov-2 Case Fatality Rate (%) by district, as on 28th Jan. 2021 (N=10,379)

The case fatality rate has increased over the last seven days by 0.1% from 5.3% on the 22nd to 5.4% to date. The Chris Hani district reported the highest case fatality rate of 7.5%, followed by Buffalo City Metro (5.9%), Nelson Mandela Metro (5.6%), Amathole (5.4%), OR Tambo (5%), Joe Gqabi (4.6%), Alfred Nzo (4.5%) the lowest being Sarah Baartman by 3.7%.

7.4. *Case Fatality Rate by age group

The figure below provides the case fatality rate for both males and females.

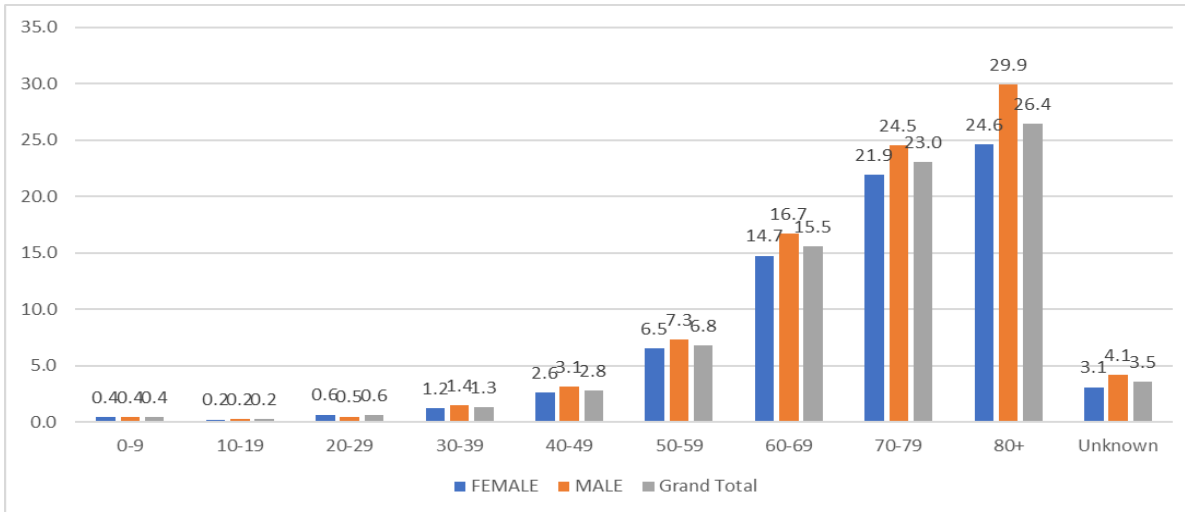
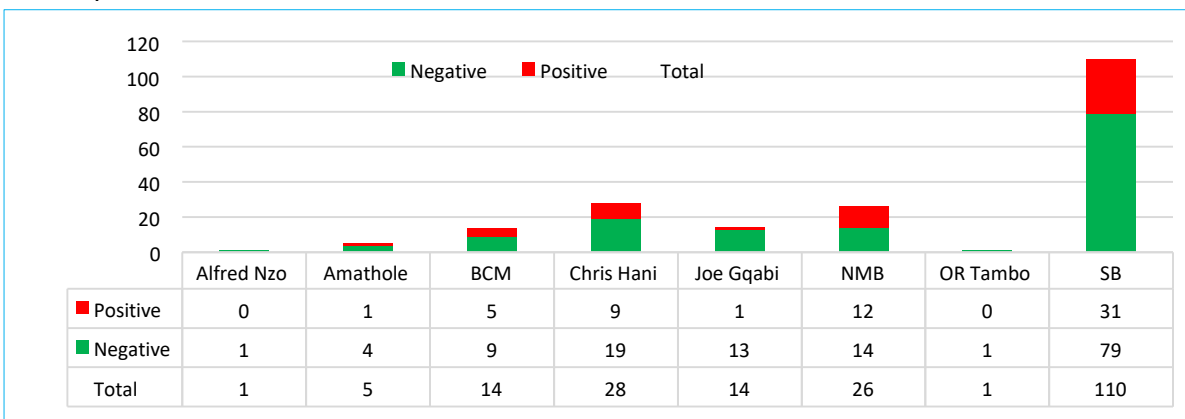


Fig. 17. SARS-Cov-2 related Case Fatality Rate (%) by age group, as on 28th Jan. 2021

The case fatality rate increases with an increasing age. Since the beginning of the pandemic, the younger population had a low case fatality rate compared to the older population that had an increased case fatality rate. The male population had a higher case fatality rate compared to the female population.

7.5. *Post-mortem testing

Thirty percent (30%), i.e. 59 of the 199 post-mortem tests (PMTs) which done in the province tested positive for SARS-Cov-2.



*Data on post mortem test updated when available from NHLS/NICD

Fig. 18. No. of post mortem test results by district, as on 22nd Dec. 2020 (Tests=199)

Fifty-five percent (55,3%) of the tested were done in Sarah Baartman and 31 tested positive (28,2% positivity rate). Twenty-eight (28) PMTs were done in Chris Hani (32,1% positivity rate) and twenty-six (26) in NM Metro Metro (46,2% positivity rate).

7.6. Deaths by health facilities

The figure below provides the number of deaths by hospital or place. Only hospitals or places with a minimum of 20 deaths are included in the figure below.

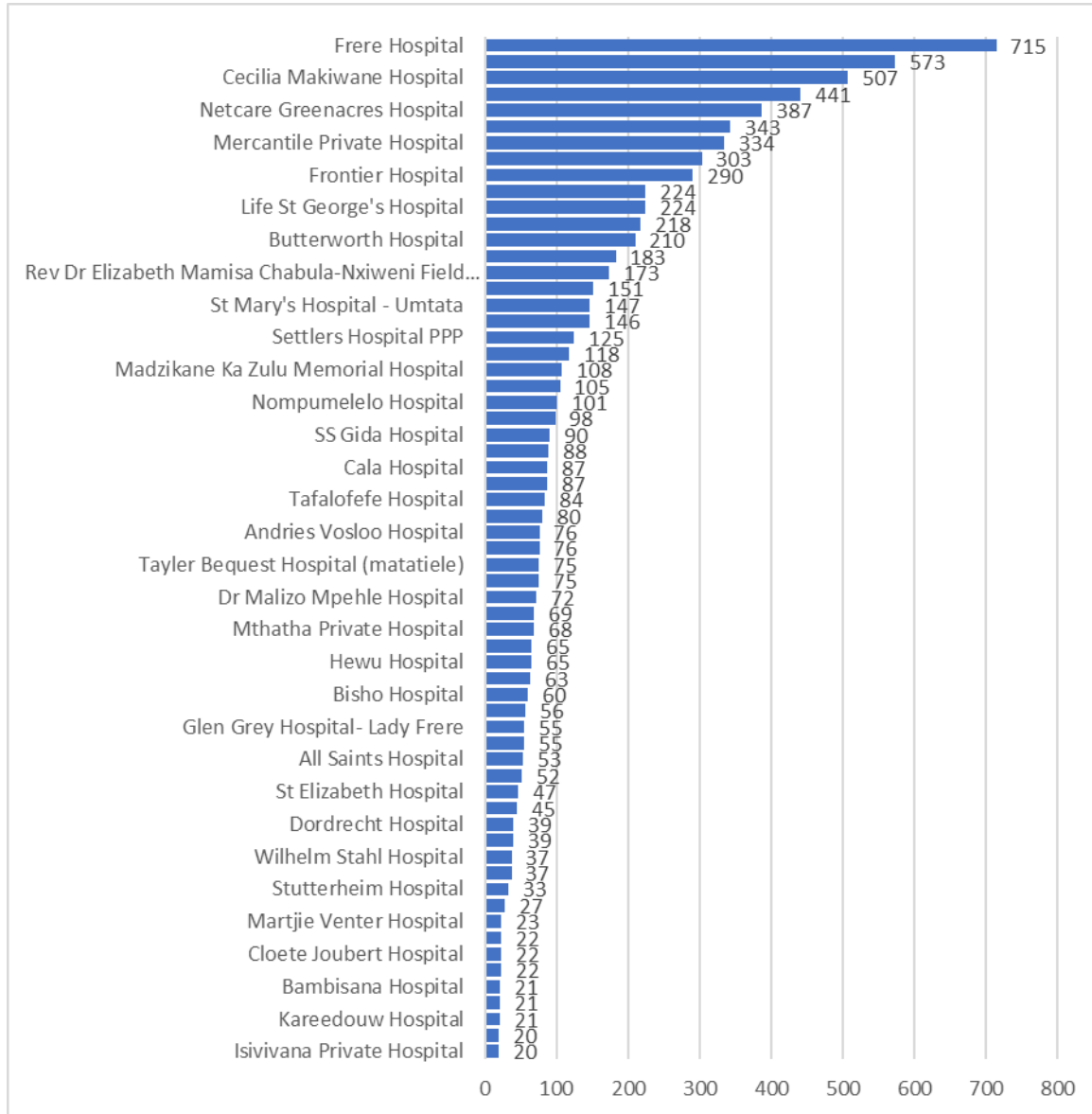


Fig. 19. No. of SARS-Cov-2 related deaths by the facility, as on 28th Jan. 2021

Frere Hospital (8.4%), Cecilia Makiwane (6.7%) and Netcare Greenacres (5.9%) recorded the three highest number of deaths in facilities (N=8529). The Rev. Dr. Elizabeth Mamisa Chabula-Nxiweni Filed hospital reported 2% of deaths reported in facilities.

6. HEALTHCARE WORKERS

6.1. Cases and deaths among HCWs

The number of reported healthcare workers who tested positive for SARS-Cov-2 was 10,828 and 247 persons demised.

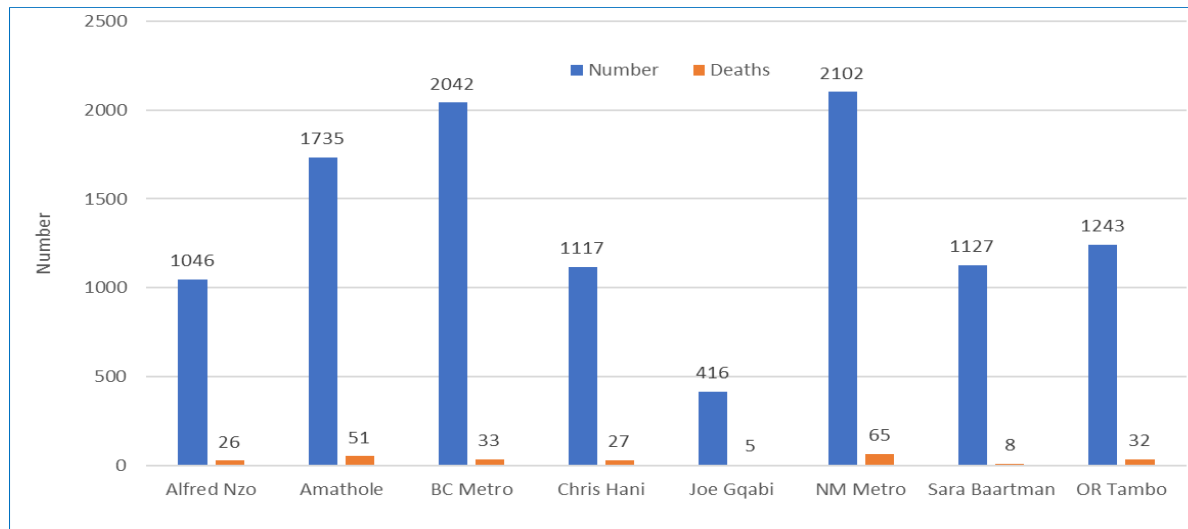


Fig. 20. SARS-Cov-2 positive Healthcare Workers, as on 28th Jan. 2021 (N = 10,828)

The number of healthcare workers who tested positive for SARS-Cov-2 in Buffalo City Metro was 2,042 (33 deaths), Nelson Mandela Metro 2,102 (65 deaths), Amathole 1,735 (51 deaths), Chris Hani 1,117 (27 deaths), OR Tambo 1243 (32 deaths) and Sarah Baartman 1127 (8 deaths) and Alfred Nzo (1046 cases, with 26 deaths). The Joe Gqabi (416 cases, with 5 deaths) reported least number of health care workers' infections and deaths.

6.2. SARS-Cov-2 Cases by job category

The table below provides the number of selected healthcare professionals employed by the State and SARS-Cov-2 cases by job categories, and the positivity rate of that job category.

	Number	Cases	Positivity Rate (%)
Admin	12434	980	7.9
Allied Professionals	3041	169	5.6
Doctors & Clinical Assoc	2369	398	16.8
Nurses	20650	4479	21.7
Emergency Medical Services	2498	229	9.2

The positivity rate among the nurses was 21.7%, followed by doctors and clinical associates (16.8%), allied professionals (5.6%), EMS (9.2%), and admin personnel (7.9%). The positivity rates among healthcare workers have a negative impact on patient safety, staff morale and confidence, and the capacity of the State to provide quality health services to the population.

6.3. SARS-Cov-2 cases among HCWs in NM Metro & Sarah Baartman

The epi-curve for healthcare workers who tested positive in NM Metro and Sarah Baartman.

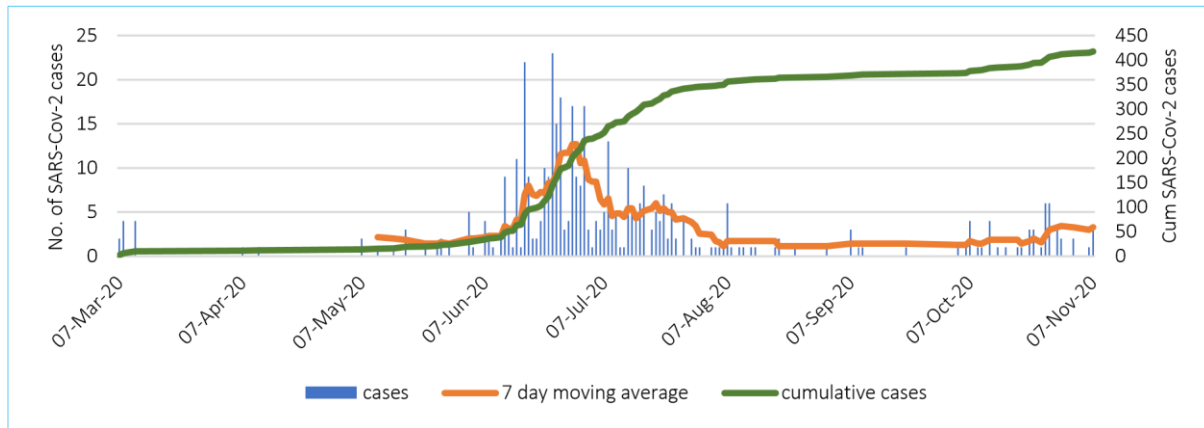


Fig. 21. No. of SARS-Cov-2 cases in NM Metro and Sarah Baartman, as on 13th Nov. 2020

The 7-day moving average shows an increase in the number of cases among healthcare workers that occurred during June and July. After the June to July period, the number of healthcare workers who tested positive decreased with the number in the general population. However, the number of cases has increased from the middle of October to date, mimicking the epi-curve for the general population. Similar to the general population, the cumulative number of cases among healthcare workers appear to continue to increase.

6.4. Case Fatality Rate (%) among HCWs

The figure below provides the cases fatality rate among all healthcare workers.

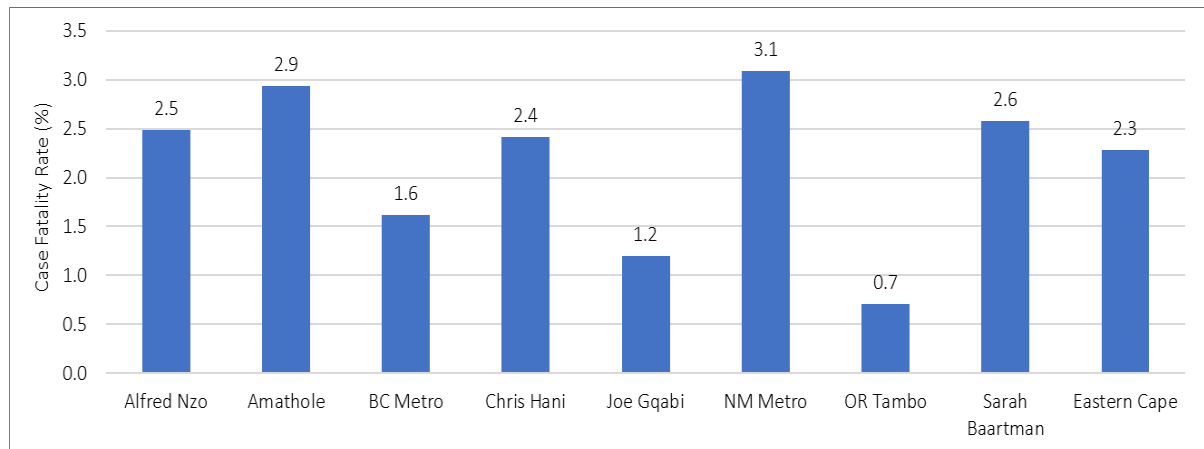


Fig. 22. SARS-Cov-2 Case Fatality Rate (%) among HCWs, as on 28th Jan. 2021 (N=247)

The case fatality rate among healthcare workers was 2.3%. Nelson Mandela Metro, Amathole, Alfred Nzo, Chris Hani and Sarah Baartman had each more than 2% of the healthcare workers succumbing to SARS-Cov-2, Buffalo City Metro (1,6%). The lowest case fatality rate was observed in OR Tambo (0,7%).

7. Hospitalization and outcomes

7.1. Admissions and outcomes

The cumulative number of SARS-Cov-2 hospitalizations is 29,862 (DATCOV).

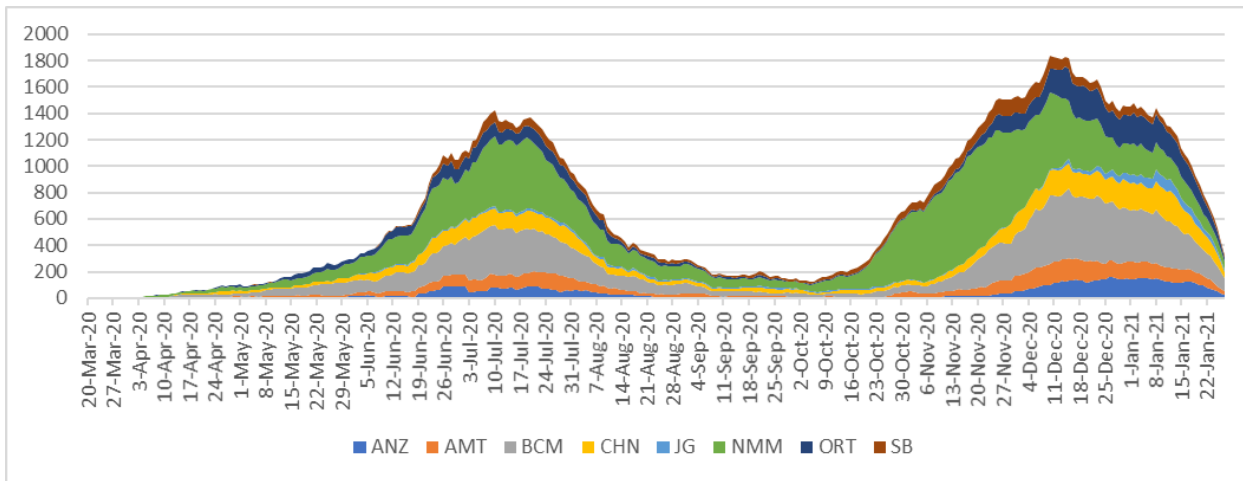
District	Public	Private	Total	Percentage
Alfred Nzo	1569	84	1653	5.5
Amathole	2266	0	2266	7.6
Buffalo City Metro	4104	2951	7055	23.6
Chris Hani	2464	717	3181	10.7
Joe Gqabi	590	0	590	2.0
Nelson Mandela Bay Metro	6368	4267	10635	35.6
O R Tambo	1987	839	2826	9.5
Sarah Baartman	1524	132	1656	5.5
Total	20872	8990	29862	100.0

Of all the hospitalizations, 29,862 (62%) occurred in public sector and 8,652 (38%) in private sector health facilities. The metros account for more than a third (34.3%) of total admissions.

Eastern Cape Total	Private	Public	Total
Died	2157	6382	8529
Discharged alive	6283	11879	18162
In Hospital	535	1550	2085
Transfer to other facility	15	1061	1076
ICU	167	39	206
High care	20	55	75
General	348	1456	1804
On Oxygen	210	494	704
Ventilated	82	24	106

Nearly two thirds of hospitalized patients were discharged alive and more than 65% of the reported discharges were from the public sector. Over a quarter (29.8%) of hospitalized cases demised due to SARS-Cov-2 related causes with 74.5% of reported deaths occurring in public sector facilities (DATCOV).

Of 2085 current admissions, more than 86.5%, were admitted in the general ward, 9.8% in ICU and 3.6% in High Care. About of 33.8% of the current admissions were on oxygen and 5.1% were on ventilation.



**Daily admissions' 7-day moving average updated based on the availability of data*

Fig. 23 *Average (7 day moving) daily admissions, Eastern Cape Health Facility Districts, as on 27 January 2021 (DATCOV)

As reported on DATCOV on 27 January 2021, the Nelson Mandela Metro accounts for 35% of all hospitalizations, followed by Buffalo City Metro (24.4%).

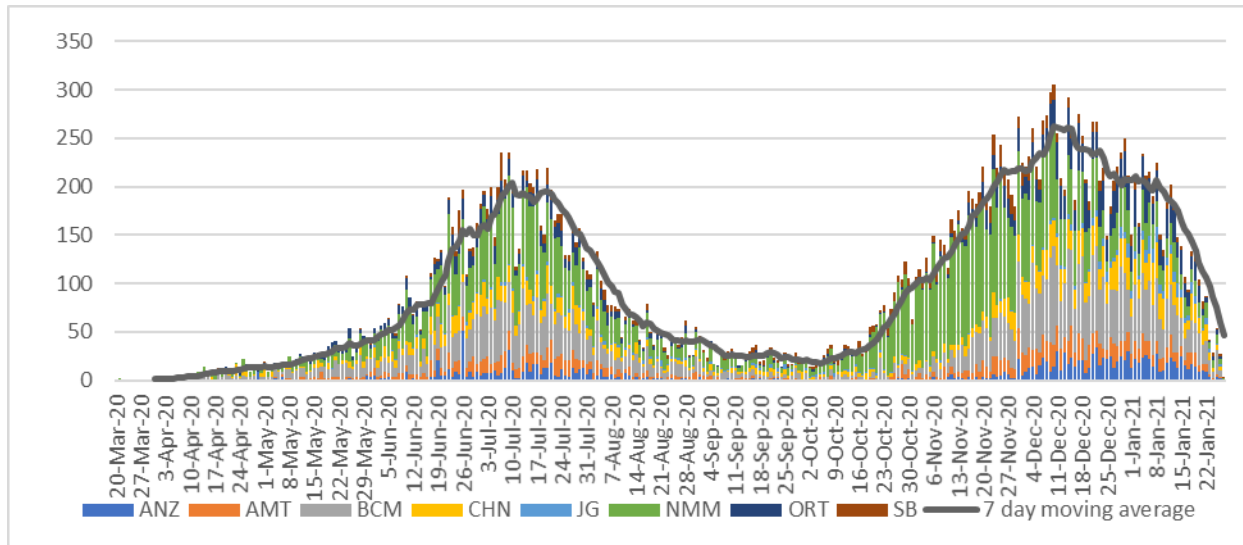


Fig. 24. No. of hospitalizations by date of admission for each district, as on 28th Jan. 2021

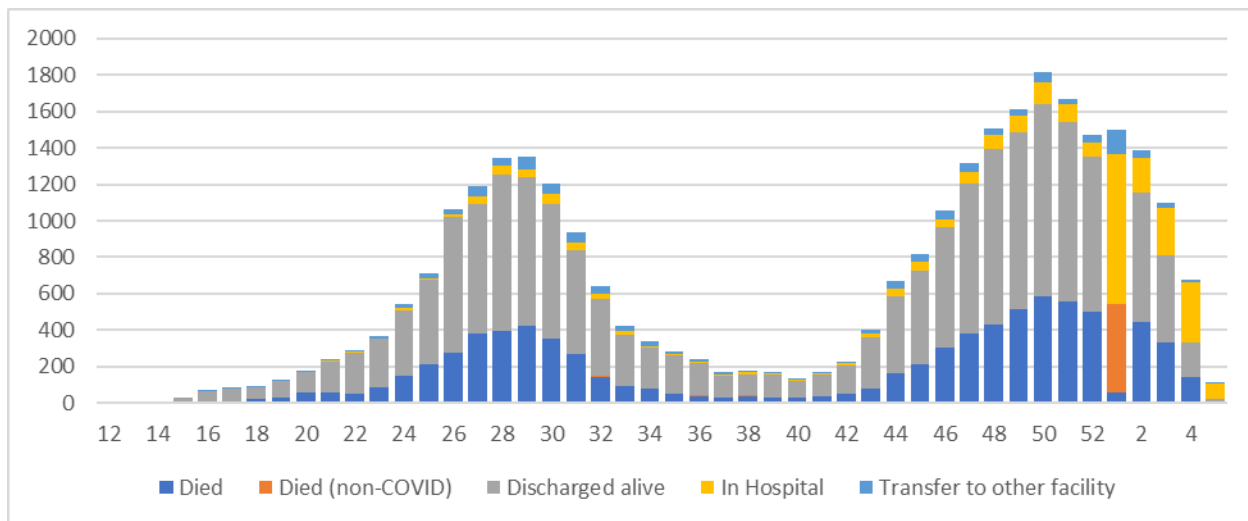


Fig. 25. Hospitalizations & outcomes by admission week, as on 27th Jan. 2021 (DATCOV)

The number of currently hospitalized patients remained high during the last part of the year and started to decline thereafter.

7.2. Co-morbidities among admitted cases and deaths

The most common co-morbidities among the hospitalized SARS-Cov-2 patients were hypertension (32.9%) and diabetes (22.1%) among hospitalized SARS-Cov-2 cases. Two other co-morbidities which were common include HIV (5,9%) and obesity (4.6%).

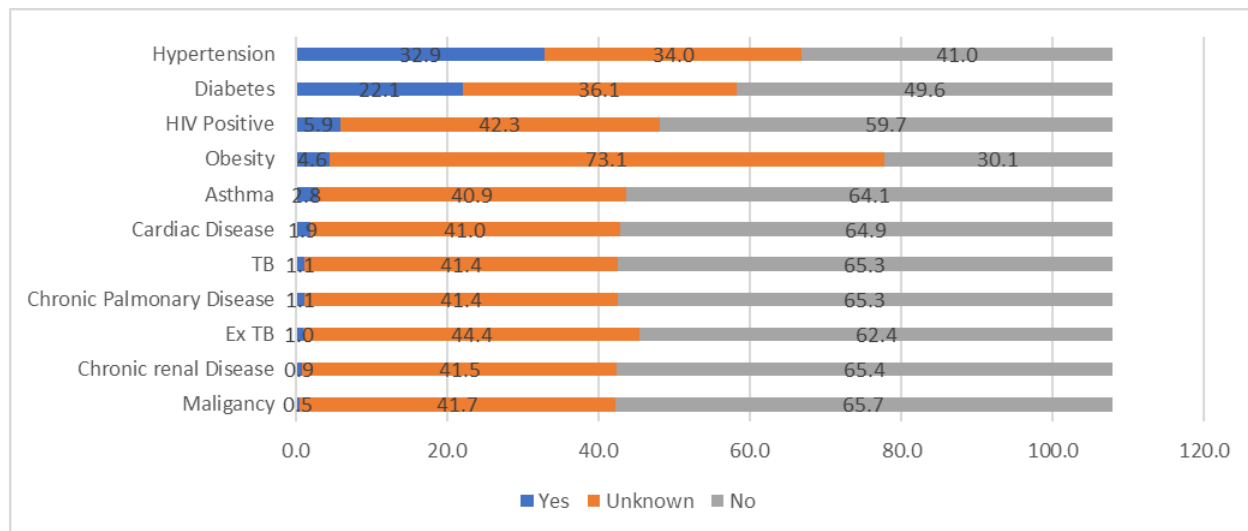


Fig. 26. Co-morbidities among SARS-Cov-2 hospitalizations, as on 27th Jan .2021 (DATCOV)

A significant percentage of hospitalized patients did not have co-morbidities. The concern was those cases, which lacked information on the existence of the co-morbidities. This may have resulted in the under-estimation of the burden of co-morbidities among hospitalized SARS-Cov-2 cases.

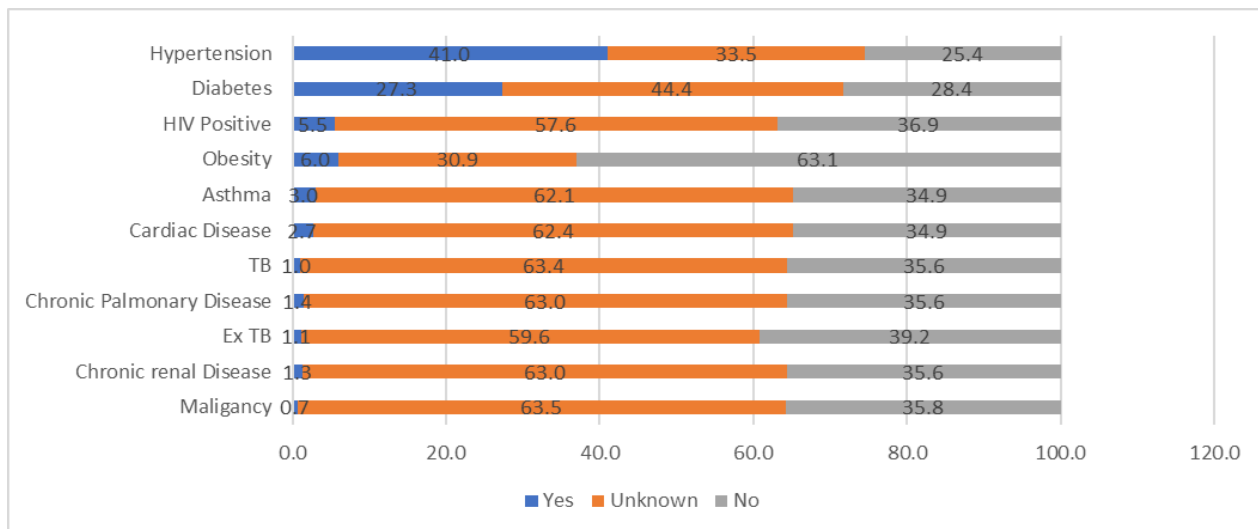


Fig. 27. Co-morbidities among SARS-Cov-2 cases who demised, as on 27th Jan. 2021 (DATCOV)

The most common comorbidities among those cases that demised in the hospital include hypertension (41.0%) and diabetes (27,3%). Four other co-morbidities obesity (6%), HIV (5,5%), cardiac diseases (2.7%), and asthma (3%).

8. CONCLUSION

The burden of disease remains high in nearly all the districts but gradually decreasing. This may be due to the impact of the public health interventions, which were implemented in all the districts. Nearly half of the active cases were from BC Metro, Chris Hani and Amathole; and a quarter of the active cases are from OR Tambo and Alfred Nzo. Unfortunately, the number of deaths have significantly increased with the increase in the number of cases.

There are key issues, which require improvement;

- Strengthen surveillance of SARS-Cov-2 including collection and testing of specimens
- Prioritize contact tracing and monitoring to minimize the spread of the infections
- Isolate positive cases and quarantine contacts to minimize transmission
- Promote the use of prevention measures against SARS-Cov-2, i.e. wearing of masks, social distancing, and frequent handwashing



3 577 773

No Screened



822 576

Total Lab Tests



191 327

Positive Cases



177 388

Recoveries



10 379

Deaths

DISTRICT	TOTAL SCREENED	TOTAL TESTED	TOTAL CASES	RECOVERIES	DEATHS	ACTIVE CASES	AREAS
ALFRED NZO	694 706	29 026	7 780	7 111	347	322	Badibanise,Bhakubha,Bizana,Brooksnek,Cedarville,Chithwa,Dutyini,Emanxiweni,Ezinteteni,Kokstad,Lucingweni,Maluti, Mandileni , Matatiele,Mount Ayliff, Mount Frere, Ndlantana, Ngingo, Ntabakhulu, Sugar Bush, Tabankulu
AMATHOLE	658 126	72 693	18 961	17 370	1031	560	Adelaide, Alice, Bolotwa, Butterworth, Cathcart, Centane, Cuba, Debe Nek, Dikana, Elliotdale, Ethafeni, Frankfort, Fort Beaufort, Ibika, Idutywa, Keiskammahoek, Willowdale, Lower Mhangocolo,Debe Nek, Mgababa, Nyaniso, Peddie
BUFFALO CITY METRO	210 367	122 554	38 190	35 740	2246	204	Abbottsford, Amalinda , Beacon Bay, Bisho, Braelynn, Buffalo Flats, Dimbaza, Duncan Village, East London, Ginsberg, Gonubie, Greenfields, Haven Hills, King William's Town, Mamata, Mdantsane, Masingata, Mantlani, Nahoon, Ndevana, Needs Camp, Parkside, Selbourne, Sunnyridge, Sunset Bay,Tshatshu, Vincent, West Bank, Zwelitsha
CHRIS HANI	515 346	60 682	19 096	16 590	1432	1 074	Bankies, Dordrecht, Dukathole, Ekunene, Ezibeleni, Kwanobuhle, Mcwangele, Madeira Park, New Rest, Ngcobo, Ngonyama, Popcorn Valley, Qebe, Qoqodala, Queenstown, Sigadleni, Vaalbank, Sada, Middleburg, Thornhill, Ndzamela, Mlungisi,Westbourne,Ntlonze, Maya Village,Ekuphumuleni, TopTown, Vteipoot, Zola
JOE GOABI	87 855	24 759	7 171	6 158	328	685	Aliwat North, Barkley East, Bhodi, Land Camp, Ugie, Inglewood, Maclear, Solomzi, Sunduza,Robbern,Venterstsd
NELSON MANDELA METRO	856 883	171 422	54 820	51 610	3094	116	Algoa Park, Betheldorp, Bloemendal, Bluewater Bay, Booyens Park, Cotswold, Cuyler, Daleview, Despatch, Fernglen Port, Gelvandale, Govan Mbeki, Heath Park, Helenvale, Jacksonville, Joe Slovo, Kabega Park, Kamma Park, Kamvelihle, Khayathu, Kleinskool, Kwa Dwesi, Kwa-Magxaki, Kwanobuhle, Kwanoxolo, KwaZakhele, Lovemore Heights, Missionvale, Motherwell, Mount Croix, New Brighton, Newton Park, North End, Port Elizabeth, Rowallan Park, Salt Lake, Sardinia Bay, Schauderville, Sherwood, Silvertown, Soweto-On-Sea, Steve Tshwete, Summerstrand, Tamboville, Uitenhage, Veeplaas, Walmer, West End, Westering, Zwide, Lorraine, Hillside, Daleview
OR TAMBO	265 613	80 211	22 109	20 625	1104	380	Gomora, Lutatweni, Machibi, Majola, Mandilini ,New Payne Ngqeleni, Ntsimbini, Old Payne, Libode, Lusikisiki, Mqanduli, Tombo, Marhewini, Mpikwana,Bhongweni,Cibeni, Flagstaff, Magcakeni,Ngangelizwe, Ngqanda,Tyebelana, Pollar Park, Tabase Mission, Slovo Park, Southernwood, Waterfall Park, Zandukwana,Zimbane, Ziphuzana
SARAH BAARTMAN	288 877	90 102	21 545	20 541	797	207	Aberdeen, Alexandria, Graaf-Reinet, Grahamstown, Jeffrey's Bay, Jourbertina, Humansdorp, Parson, St. Francis Bay, Kirkwood, Lotusville, Bergendal, Bratenfel, Joza, Santaville, Somerset East, Thornhill, Willomore
IMPORTED*	-	0	595	595	0	0	Bloemfontein, Ceres, Cape Town, Dunoon, Fishoek, George, Green Point, Gugulethu, Hout Bay, Langa, Khayelitsha, Knysna, Phillipi, Stellenbosch, Strand
PENDING	-	171 127	1060	1048	0	12	
GRAND TOTALS	3 577 773	822 576	191 327	177 388	10 379	3 560	

ACKNOWLEDGEMENTS

- The epidemiological and surveillance functions continue because of the strong partnership between the following stakeholders;
- World Health Organization with epidemiologists, biostatisticians, and technical support
- The National Institute for Communicable Diseases (NICD) provided the province with epidemiologists and technical support
- The data analyst from TB/HIV Care has supported data management, mapping of the cases and other functions in the department
- Right to Care assists in mapping the cases in different areas in the province
- Centre for Disease Control (Atlanta-Pretoria) provided the Department with an epidemiologist and a statistician to support the province
- The Department of Health, both the National and Provincial Department of Health re-purposed the employees to focus on the control and prevention of the pandemic
- Laboratories; National Health Laboratory Services, Pathcare and Ampath for prompt and regular reporting of SARS-Cov-2 cases.

Appendix 1: Incidence rate by Eastern Cape Districts and week of specimen collection as of 31 December 2020 Week 2 is interim data is incomplete and has been excluded.

