

Daily Epidemiological Report for SARS-Cov_2

Report No. 307

Date Issued 04 Feb. 2021 @22H00

1. PURPOSE

The report provides a descriptive analysis of SARS-Cov-2 related cases and deaths, which were detected, reported and investigated in the Eastern Cape Province, as on 04 Feb. 2021.

2. HIGHLIGHTS

a. As on the 04th February 2021, **137** new SARS-Cov-2 cases were reported; with a majority of the newly reported cases reported in Buffalo City Metro (18.4%), followed by the Nelson Mandela Metro (16.2%) and OR Tambo (14.7%) districts.

- Active Cases: Of the **2835** current active cases, majority are in Chris Hani (**33.7%**), followed by Amathole (**17.5%**) and OR Tambo (**15.7%**).
- The provincial recovery rate was **92.9%**. Only the Chris Hani district reported a recovery rate below 90%.
- From the 5th of January 2021 to date, testing rate has increased while the percentage of specimens testing positive has decreased.

b. **Covid-19 related deaths:**

- In the last 24 hours, **44** new deaths were reported with **8** of the deaths occurring in the last 48 hours (DATCOV).
- **Clinical audits and back capturing of deaths into DATCOV have identified an increase in the number of deaths especially in between June and August 2020.**

c. **Hospitalizations and outcomes:**

As on 03 February 2021, there were **782** admitted cases; 70.3% in the public sector and 29.7% in the private sector. More than 37%, were admitted in the general ward, 7% in ICU and 52.8% in High Care. About 61.8% of the current admissions were on oxygen and 14.4% were on ventilation.

d. **Healthcare workers:**

- The cumulative number of healthcare workers who tested positive for SARS-Cov-2 was **10,906** and **248** demised (the case fatality rate was 2.3%).
- Nurses were the most affected, followed by doctors and clinical associates. **There is an increase in the positivity rate among healthcare workers in the metros.**

Conclusion

- The burden of disease due to SARS-Cov-2 appears to be declining but still remains high in some areas of the province.
- Just over half of the active cases are in Chris Hani, Joe Gqabi, OR Tambo and Amathole.
- Six districts report a recovery rate, which is above 90% and 2 districts, Chris Hani and Joe Gqabi, report recovery rates less than 90%.
- There is a need to strengthen identification of suspected cases, collection specimens for COVID-19 testing, isolation of cases and quarantining of contacts. Promoting compliance to non-pharmaceutical interventions remains a central strategy in preventing further spread of infections in communities.

3. SARS-Cov-2 CASES & DEATHS

3.1. Summary of all cases and deaths

On the 04th of February 2021, **137** new cases and 1 transfer-ins from another province. A total of **44** deaths (**8** occurred in the last 48 hours). The cumulative number of cases and deaths were **192,467** and **10,871** respectively.

	No. of cases	Transfers out	Transfer in	New Cases	Total	%	Deaths	New Deaths		Total	CFR
								*Newly Reported	**Newly occurred		
Male	75997			48	76045	39.5	4647	15	3	4665	6.1
Female	116136		1	88	116225	60.4	6180	21	5	6206	5.3
Unknown	197			0	197	0.1	0			0	0.0
Total	192330		1	136	192467	100.0	10827	36	8	10871	5.6

* Deaths which occurred more than 48 hours ago ** Deaths which occurred within the last 48 hours of reporting

The provincial case fatality rate (CFR) was reported as 5.6%, with a CFR of 6.1% among males and 5.3% among the female population. Clinical audits in hospitals are vital and provide valuable information to estimate the burden of disease.

District	Cases	Transfer out	Transfer in	New Cases	Total Confir	Recoveries	Deaths	New Deaths		Total Death	CFR%	Recover	Active Cases
								*Newly Reported	**Newly occurred				
Alfred Nzo	7861			7	7868	7213	403	0	1	404	5.1	91.7	251
Amathole	19083			11	19094	17543	1053	2	1	1056	5.5	91.9	495
BC Metro	38322			25	38347	35820	2292	3	1	2296	6.0	93.4	231
Chris Hani	19264			17	19281	16861	1463	1	0	1464	7.6	87.4	956
Joe Gqabi	7307		1	14	7322	6734	357	2	1	360	4.9	92.0	228
NM Metro	54962			22	54984	51652	3235	6	2	3243	5.9	93.9	89
OR Tambo	22257			20	22277	20621	1188	22	2	1212	5.4	92.6	444
Sarah Baartmar	21591			10	21601	20674	836	0	0	836	3.9	95.7	91
Imported	595				595	595	0			0	0.0	100.0	0
Unspecified	1088			10	1098	1048	0			0	0.0	95.4	50
E. Cape	192330	0	1	136	192467	178761	10827	36	8	10871	5.6	92.9	2835

* Deaths that occurred more than 48 hours ** Deaths which occurred within the past 48 hours of reporting

In the past 24 hours 137 new cases were reported; Buffalo City Metro (18.4%), Nelson Mandela Metro (16.2%), OR Tambo (14.7%), Chris Hani (12.5%), Joe Gqabi (10.3%), Amathole (8.1%), Alfred Nzo (5.1%), and Sarah Baartman (7.4%).

Of the 2835 active cases, Chris Hani accounted for 33.7%, Amathole (17.5%), OR Tambo (15.7%), Alfred Nzo (8.9%), Joe Gqabi (8%), Buffalo City Metro (8.1%), Sarah Baartman (3.2%) and Nelson Mandela Metro (3.1%).

The overall provincial recovery rate was 92.9%. Seven districts reported a recovery rate greater than 90% and the Chris Hani district reported a recovery rate of 87.4%.

3.2. Newly diagnosed cases

Figure 1 provides the 7-day moving average of newly reported cases by district comparing a period of weeks, 20th-25th and 26th – 03rd February 2021.

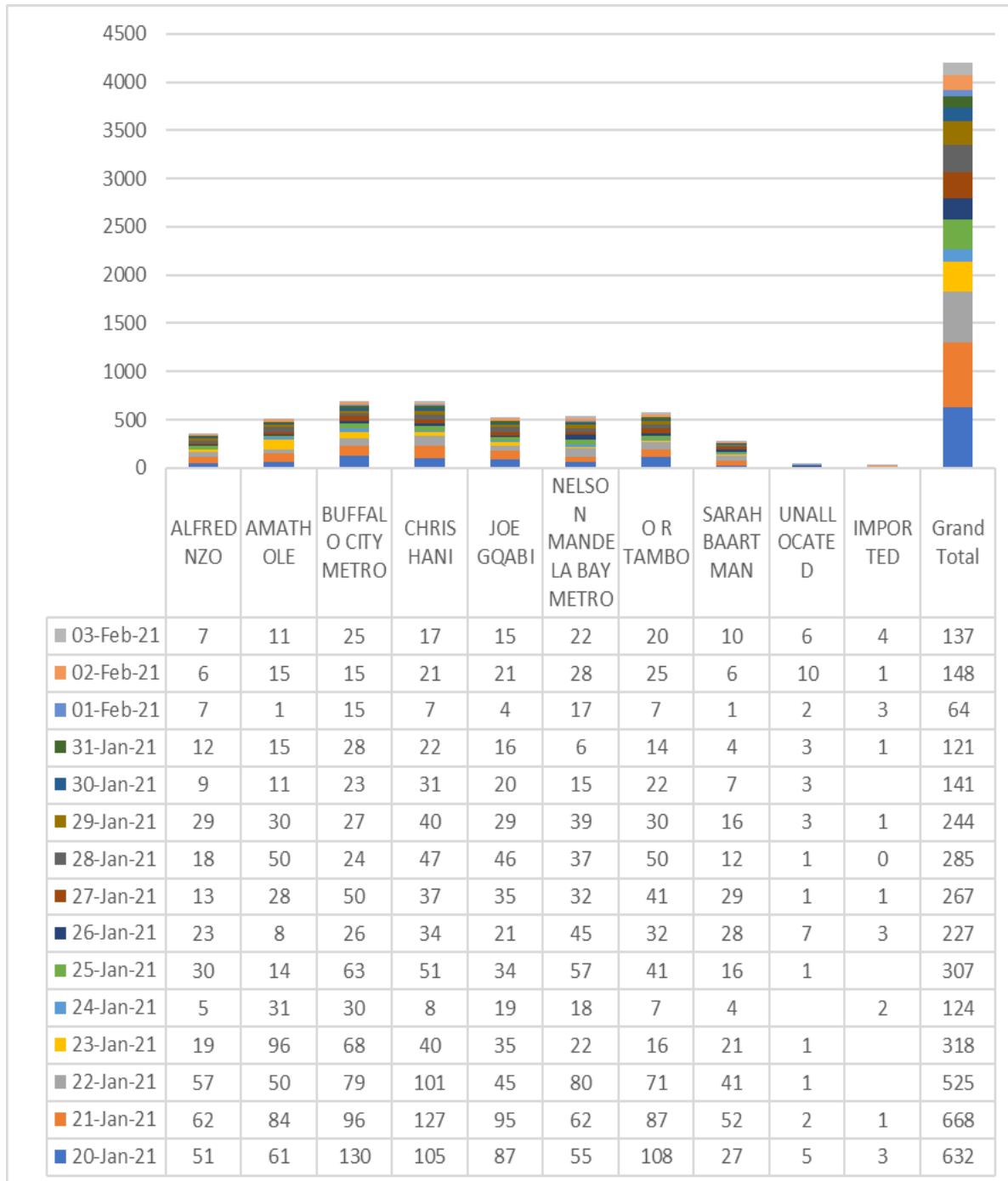


Fig. 1. Number of daily newly reported SARS-Cov-2 cases by district, as on 04th Feb. 2021

4. SARS-Cov-2 LAB TESTS & RESULTS

4.1. *Test Results by Laboratory

The number of specimens tested by public and private sector laboratories was 848,054. About 63.2% of the tests were done in the public sector and 36.8% in private sector laboratories.

	Private	Public	Total	%
Alfred Nzo	2449	26924	29,373	3.5
Amathole	8339	68051	76,390	9.0
BC Metro	30821	91935	122,756	14.5
Chris Hani	6866	53305	60,171	7.1
Joe Gqabi	1281	25523	26,804	3.2
NMB Metro	35290	123473	158,763	18.7
OR Tambo	16631	65412	82,043	9.7
Sarah Baartman	3764	81610	85,374	10.1
Unclassified	207456	0	207,456	24.4
Eastern Cape	312897	536233	849,130	100.0

4.2. *Antigen Testing

The total number of specimens tested using the antigen testing method, was 56,790 with a 13.2% positivity rate.

	Negative	Positive	Total	Percentage (%)	Positivity Rate (%)
A Nzo	4250	908	5158	9.1	17.6
Amathole	3111	594	3705	6.5	16.0
BC Metro	7263	1570	8833	15.6	17.8
Chris Hani	5943	1115	7058	12.4	15.8
Joe Gqabi	1949	448	2397	4.2	18.7
NM Metro	15147	1255	16402	28.9	7.7
OR Tambo	7655	1318	8973	15.8	14.7
Sarah Baartman	3979	285	4264	7.5	6.7
Total	49297	7493	56790	100.0	13.2

The Nelson Mandela Metro district accounted for 28.9%, followed by Buffalo City Metro (15.6%), OR Tambo (15.8%), Chris Hani (12.4%), Alfred Nzo (9.1%), Sarah Baartman (7.5%), Amathole (6.5%), and Joe Gqabi (4.2%). Proportion of specimens testing positive for SARS-Cov-2 using the Rapid Antigen Method was 13.2%, with Alfred Nzo (17.9%), Joe Gqabi (18.7%), Buffalo City Metro (17.8%), OR Tambo (14.7%) and Amathole (16%).

4.3. *Tests by age group and sex

The following figure 3 provides the number of tests done by age group. The economically active age group (20 to 59 years) accounted for the majority of tests conducted (>63%).

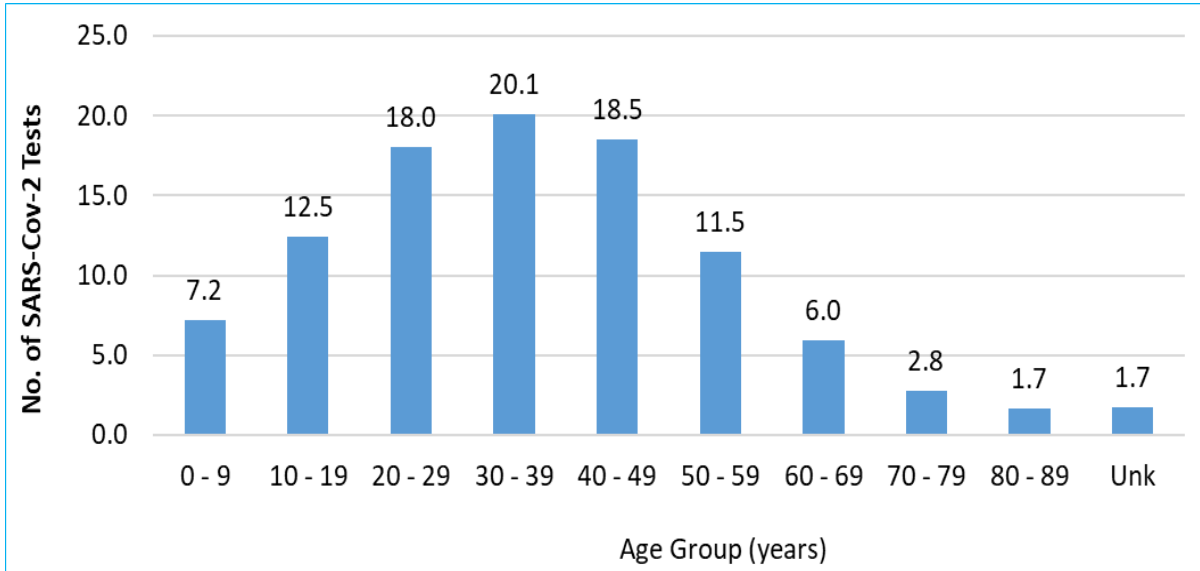


Fig. 3. Public sector SARS-Cov-2 tests by age group, as on 04th Feb. 2021

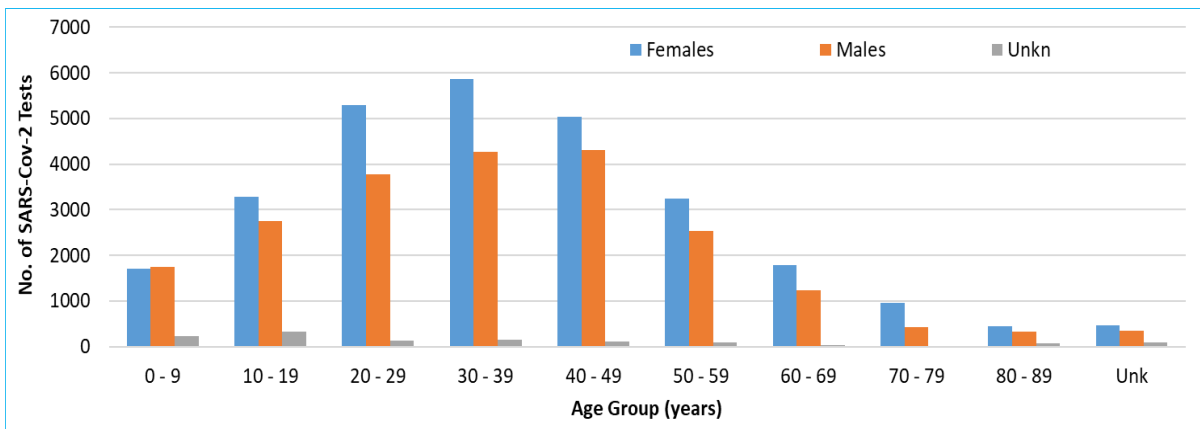
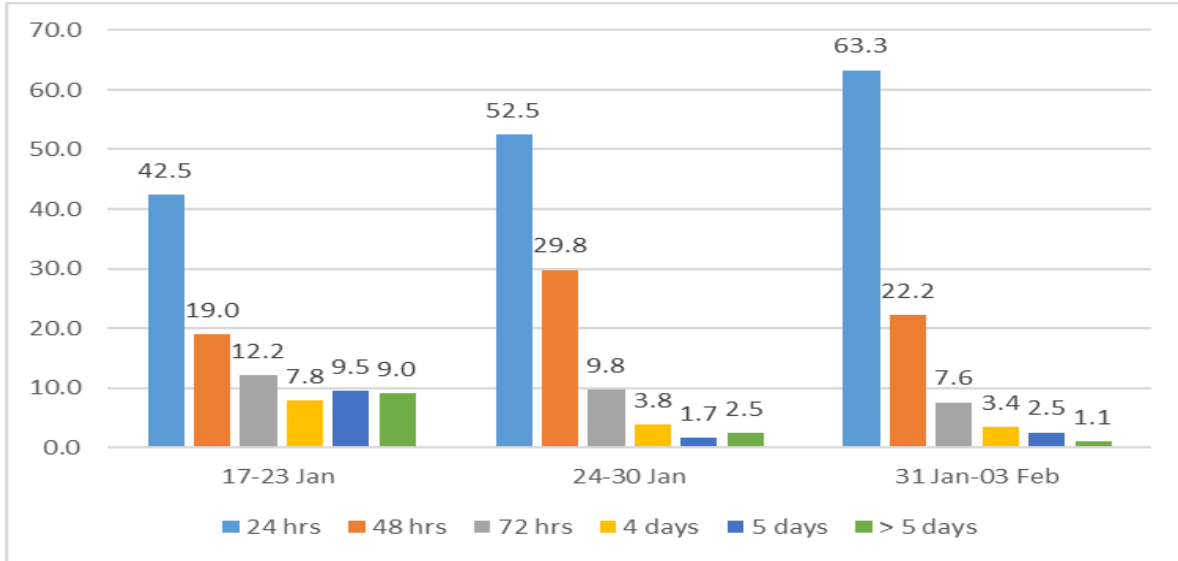


Fig. 4. No. of SARS-Cov-2 public sector tests by age group and gender, as on 3rd Feb. 2021

Figure 4 provides the number of tests conducted in the public sector by age group and gender between the 30 November 2020 and 03 February 2021. The female population accounted for 28,107 (55%) and male population accounted for 27,715 (42.5%) of the positive tests. Less than 3% (1,260) lacked information on gender.

4.4. *Turnaround Time

The turnaround time is used as a key performance indicator of the laboratory performance. The table below provides the turnaround time in both public and private laboratories that was reported by NICD.



*The data for TAT by the laboratory is only updated when available

Fig. 5. Turnaround time for positive results by week as on 03rd Feb. 2021

The period between 31 January and 03 February, 7.6% of the test results were available within 72 hours or less compared to 9.8% in the previous week, a decrease of 2.2%. More than 63% of the results were available within 24 hours, a 10.8% increase compared to the previous week.

4.5. *The 7-day moving average of SARS-Cov-2 tests & positivity rate

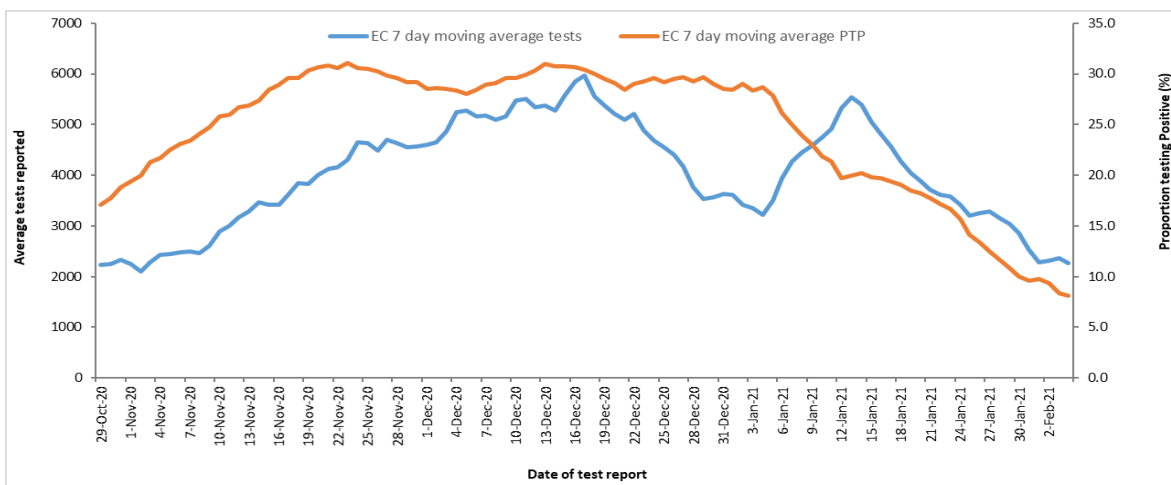


Fig. 6. 7-day moving average for laboratory tests and positivity rate, as on 04th Feb. 2021

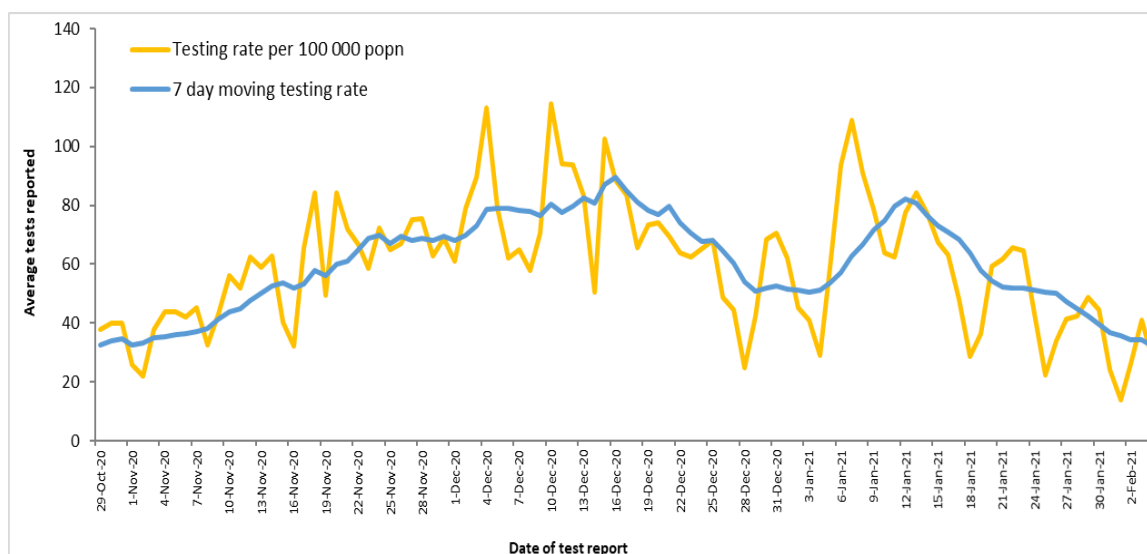


Fig. 7. The 7-day moving average for tests and testing rate, as on 04th Feb. 2021

The seven-day moving average and testing rate has decreased from 42 tests conducted per 100,000 on 29 January to 32 tests per 100,000 on 04 February 2021.

5. ACTIVE CASES, INCIDENCE & POSITIVITY RATE

5.1. Active SARS-Cov-2 cases and the cumulative positivity rate

District	Population Estimates	No. of tests	SARS-Cov-2 Cases (ALL)	Active SARS-Cov-2 Cases	SARS-Cov-2 per 100,000 (Active)	Positivity Rate
Alfred Nzo	827826	28,218	7868	251	30.3	27.9
Amathole	798067	73,592	19094	495	62.0	25.9
BC Metro	798798	120,571	38347	231	28.9	31.8
Chris Hani	733743	58,033	19281	956	130.3	33.2
Joe Gqabi	343075	25,249	7322	228	66.5	29.0
NM Metro	1210803	155,615	54984	89	7.4	35.3
OR Tambo	1520922	80,247	22277	444	29.2	27.8
S Baartman	480223	83,452	21601	91	18.9	25.9
Imported			595	0		
Unspecified		171,127	1098	50		
Eastern Cape	6713457	796104	192467	2835	42.2	24.2

The province reported 42.2 active cases per 100 000 population as of 04 February 2021. The cumulative positivity rate was 24.2%. Three districts reported a cumulative positivity rate above 30%. The Chris Hani district reported the highest number of active cases; 130.3 active cases per 100,000 population for the past 7 days, followed by the Amathole and Joe Gqabi district (62 and 66.5 respectively). Five districts (Alfred Nzo, Sarah Baartman, OR Tambo, Nelson Mandela Metro and Buffalo City Metro) had less than 50 active cases per 100,000 population.

5.2. Incidence of SARS-Cov-2 cases

The incidence of SARS-Cov-2 is above the hotspot threshold (10 cases per 100 000 population) in all districts. Since week 2 there has been a decrease in incidence in all districts. The past two weeks the province observed a decrease following a rise observed in week 52 (20 to 26 December 2020).

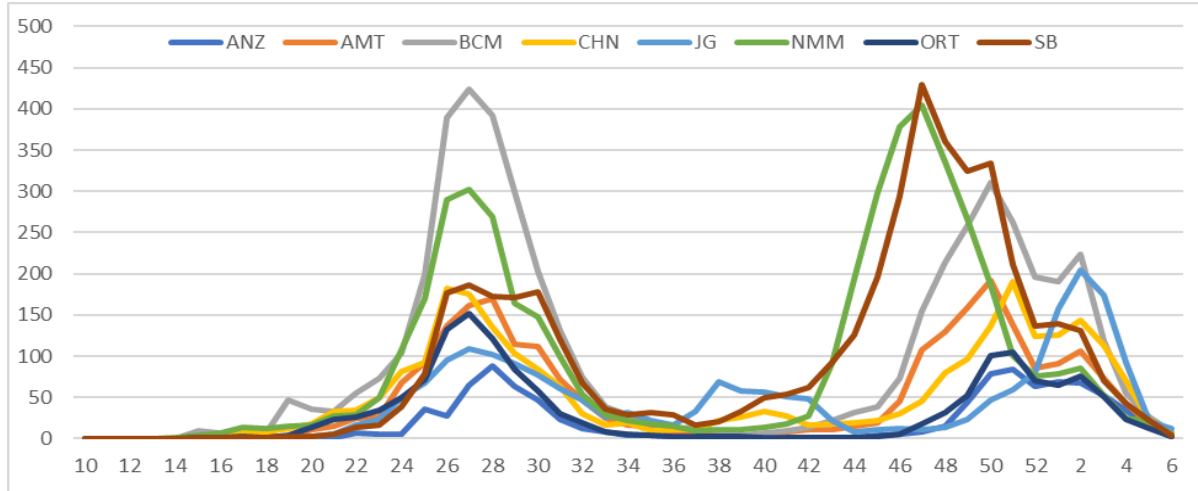


Fig. 8. Incidence of SARS-Cov-2 cases by epidemiological week, as on 04th Feb. 21

In the past 7 days, the incidence of SARS-Cov-2 decreased from 41.9 cases per 100,000 on the 29th of January to 42.2 per 100,000 on the 04th February (Figure 9). Only one district reported a minimum of >100 active cases per 100,000 populations, and 7 had less than 100 per 100,000 active cases.

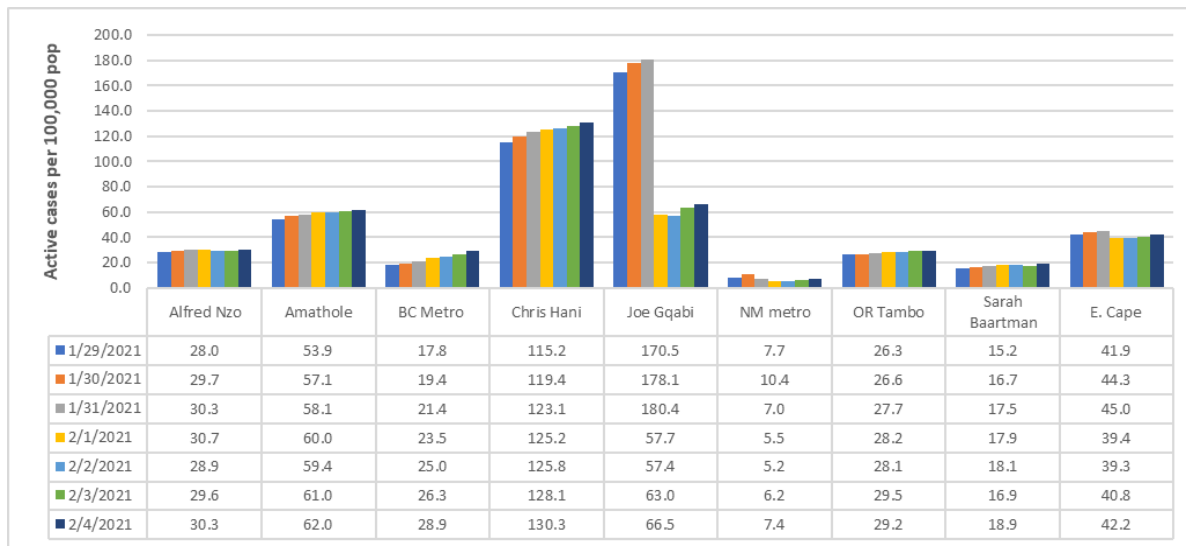


Fig. 9. Incidence of active SARS-Cov-2 (per 100,000) by district date, as on 04th Feb. 2021

5.3. Recovery Rate (%)

The figure below provides the recovery rate over a period of 7 days for each district.

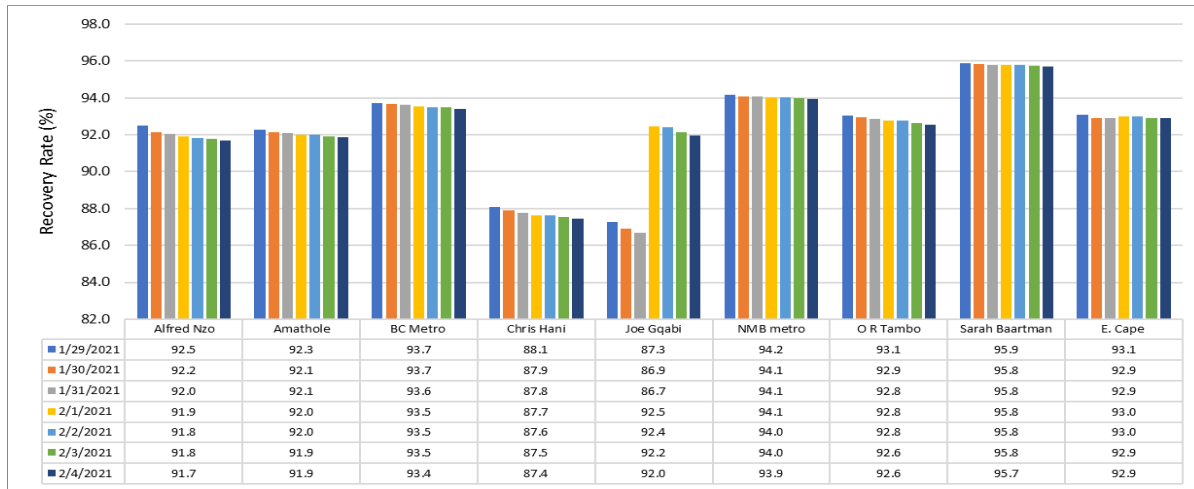


Fig. 11. Recovery Rate (%) by districts, as on the 04th Feb. 2021 (N=178,761)

The provincial recovery rate remained above 90% over the past 7 days. Seven districts reported a recovery rate above 90%. The Chris Hani district reported a recovery rate below 90% (87.4%).

5.4. Mapping of active cases, recoveries and deaths

The map shows the distribution of active cases, recoveries and deaths related to SARS-Cov2 in the province.

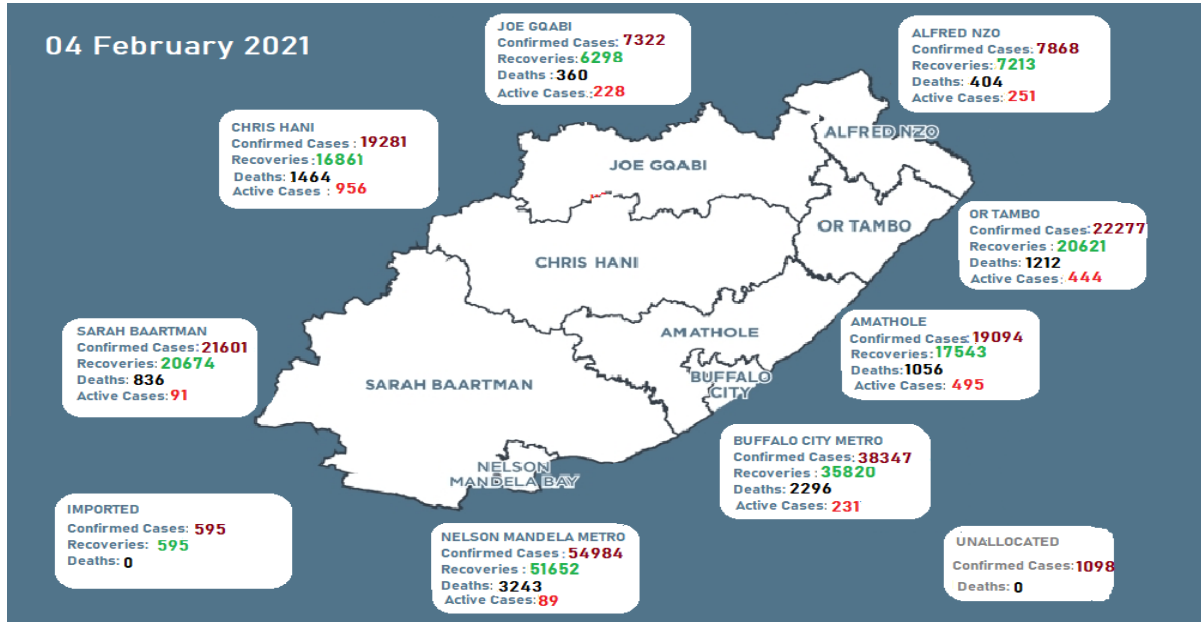


Fig. 12. Number of Covid-19 cases, recoveries and deaths, as on 04th Feb. 2021

6. SARS-COV-2 CASES AND 7-DAY MOVING AVERAGE

The graph below depicts the total number (including cumulative) of cases and the 7-day moving average.

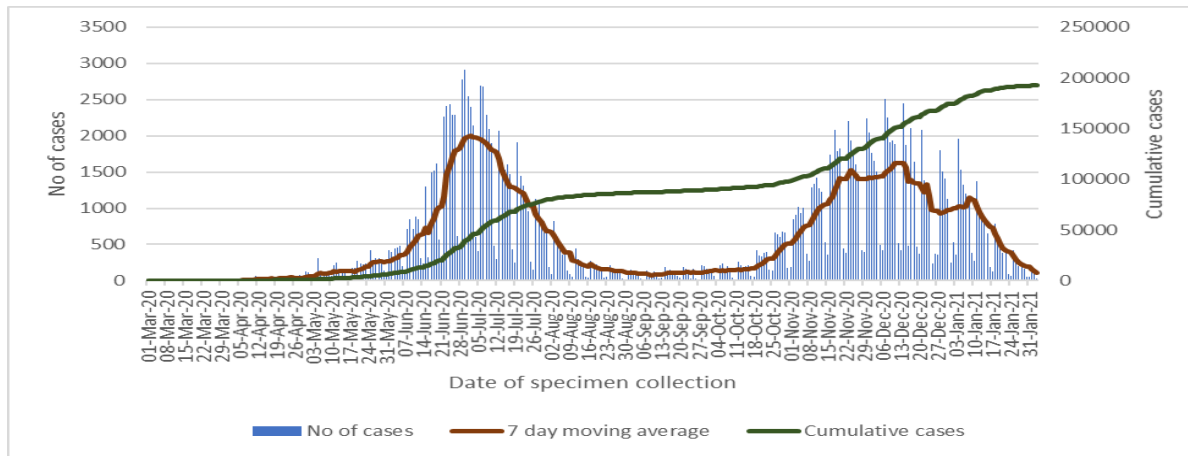


Fig. 13. The 7-day moving average for COVID-19 cases by date of specimen collection (04th Feb. 2021)

The number of daily newly diagnosed cases increased from the second half of October and peaked in the mid-December, and then decreased until to date. However, the cumulative number continues to show an upward trend. The second peak of the pandemic appears to be approaching the level of the first peak.

7. SARS-Cov-2 RELATED MORTALITY

7.1. SARS-Cov-2 related deaths

The table below provides the total number of cases, deaths and mortality rate by the month.

Month	Cases	Percent (%)	Deaths	Percent (%)	Case Fatality Rate (%)	Mortality Rate (per 100,000)
March	13	0.0	1	0.0	7.7	0.0
April	638	0.3	35	0.3	5.5	0.5
May	3282	1.7	285	2.6	8.7	4.2
June	23783	12.4	1032	9.5	4.3	15.4
July	50289	26.1	2017	18.6	4.0	30.0
August	8279	4.3	664	6.1	8.0	9.9
September	2991	1.6	212	2.0	7.1	3.2
October	8625	4.5	286	2.6	3.3	4.3
November	33706	17.5	1685	15.5	5.0	25.1
December	42469	22.1	2687	24.7	6.3	40.0
21-Jan	18110	9.4	1780	16.4	9.8	26.5
21-Feb	282	0.1	42	0.4	14.9	0.6
Unknown	0	0.0	145	1.3		2.2
Total	192467	100	10871	100	5.6	162

The month of December accounts for the second highest proportion of cases (22.1%) and the highest proportion of SARS CoV-2 related deaths (24.7%). The Case Fatality Rate was highest in May 2020 (8.7) but has since been surpassed by January 2021 reporting a CFR of 9.8%.

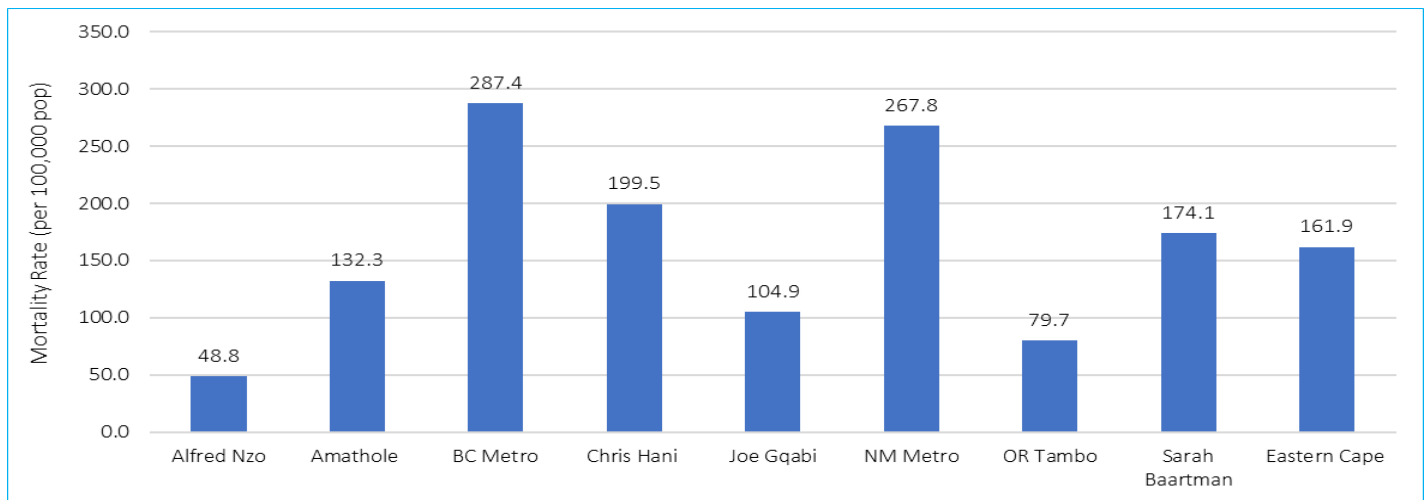


Fig. 14. SARS-Cov-2 related mortality per 100,000 by district, as on 04th Feb. 2021

The mortality rate related to SARS-Cov-2 was 161.9 deaths per 100,000 populations. The highest mortality rate was observed in Buffalo City Metro (287.4 deaths per 100,000) followed by Nelson Mandela Metro (267.8 deaths per 100,000), Chris Hani (199.5 per 100,000) and Sarah Baartman (174.1 per 100,000).

7.2. Number of reported SARS-Cov-2 related deaths

The figure below depicts the daily deaths and the cumulative number of deaths.

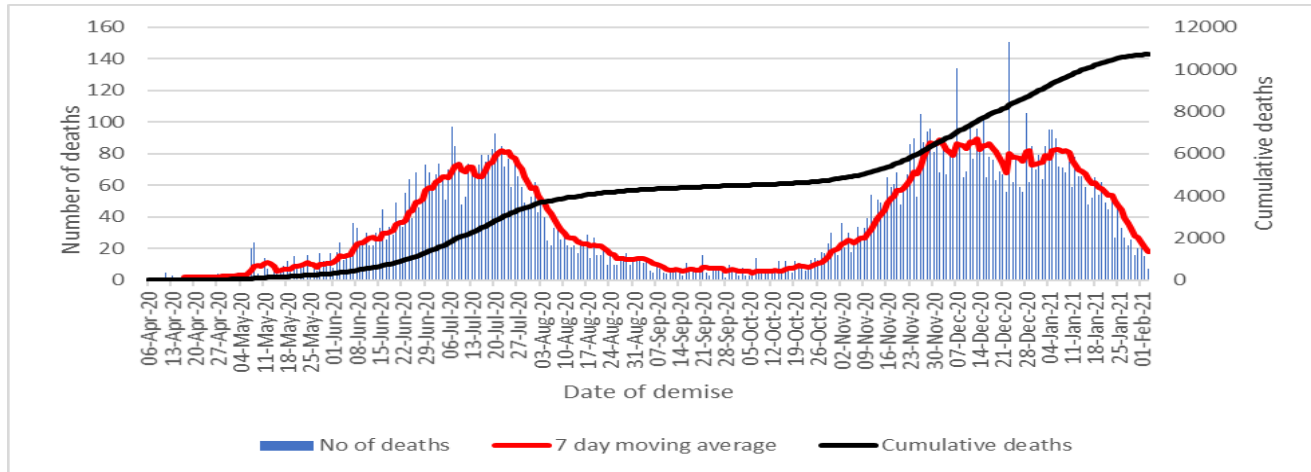


Fig. 15. Daily and cum. SARS-Cov-2 related deaths by date of demise, as on 04th Feb. 2021

The number of daily deaths increased since May 2020 and peaked on the 20th July 2020, then rapidly declined in August and October. In last week of October, the number of deaths increased and peaked in mid-December. The cumulative number of deaths continues to increase until to date.

7.3. Case Fatality Rate by district

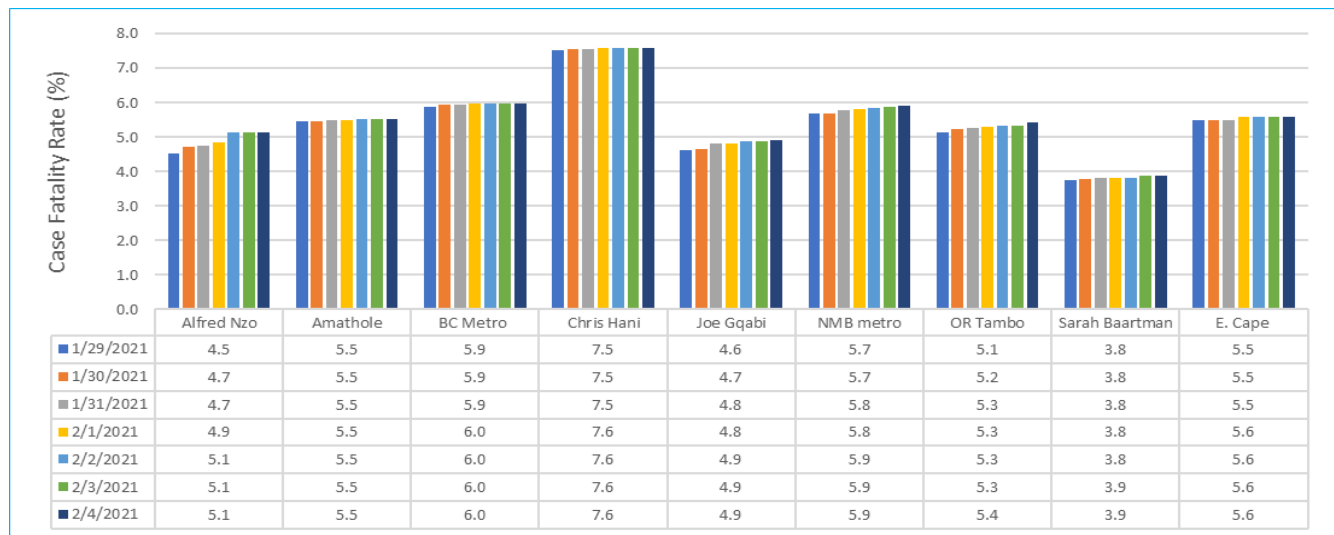


Fig. 16. SARS-Cov-2 Case Fatality Rate (%) by district, as on 04th Feb. 2021 (N=10,871)

The case fatality rate has increased over the last seven days by 0.1% from 5.5% on the 29th to 5.6% to date. The Chris Hani district reported the highest case fatality rate of 7.6%, followed by Buffalo City Metro (6%), Nelson Mandela Metro (5.9%), Amathole (5.5%), OR Tambo (5.4%), Joe Gqabi (4.9%), Alfred Nzo (5.1%) the lowest being Sarah Baartman by 3.9%.

7.4. Case Fatality Rate by age group

The figure below provides the case fatality rate for both males and females.

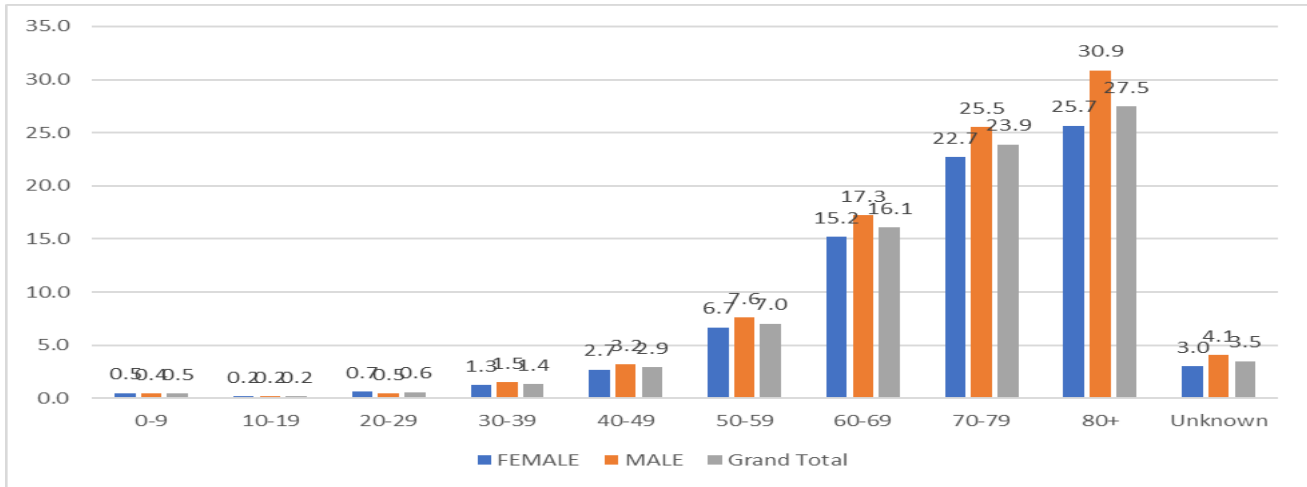
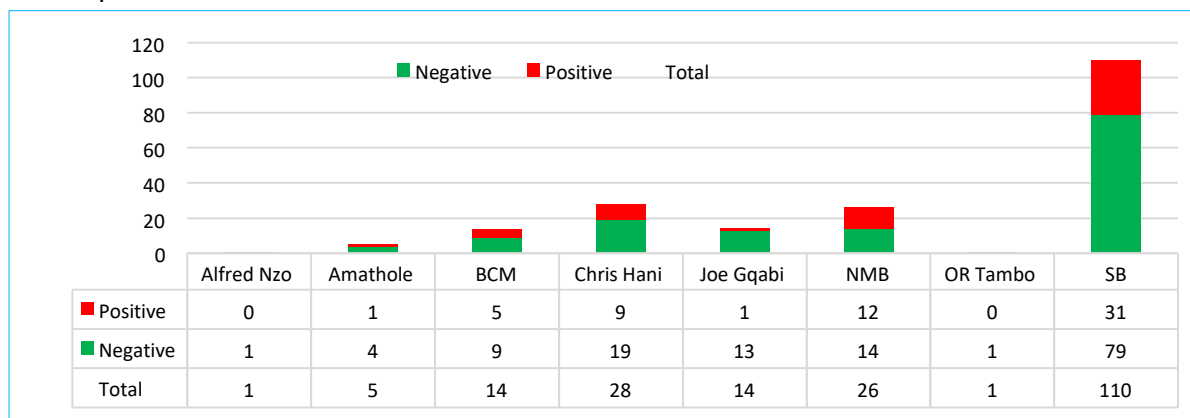


Fig. 17. SARS-Cov-2 related Case Fatality Rate (%) by age group, as on 04th Feb. 2021

The case fatality rate increases with an increasing age. Since the beginning of the pandemic, the younger population had a low case fatality rate compared to the older population that had an increased case fatality rate. The male population had a higher case fatality rate compared to the female population.

7.5. *Post-mortem testing

Thirty percent (30%), i.e. 59 of the 199 post-mortem tests (PMTs) which done in the province tested positive for SARS-Cov-2.



*Data on post mortem test updated when available from NHLS/NICD

Fig. 18. No. of post mortem test results by district, as on 22nd Dec. 2020 (Tests=199)

Fifty-five percent (55,3%) of the tested were done in Sarah Baartman and 31 tested positive (28,2% positivity rate). Twenty-eight (28) PMTs were done in Chris Hani (32,1% positivity rate) and twenty-six (26) in NM Metro Metro (46,2% positivity rate).

7.6. Deaths by health facilities

The figure below provides the number of deaths by hospital or place. Only hospitals or places with a minimum of 20 deaths are included in the figure below.

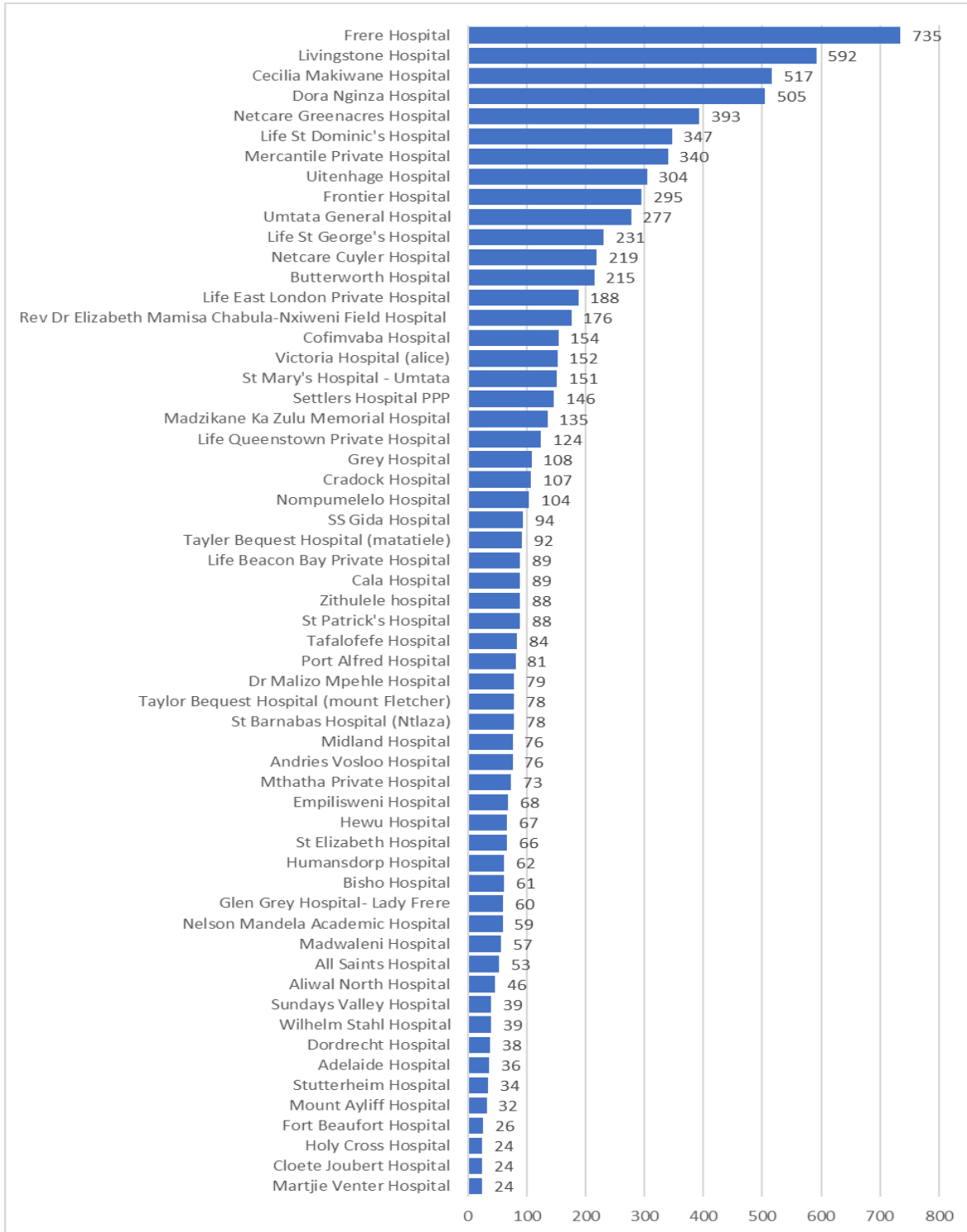


Fig. 19. No. of SARS-Cov-2 related deaths by the facility, as on 04th Feb. 2021

Frere Hospital (8.2%), Livingstone Hospital (6.5%) and Cecilia Makiwane Hospital (5.7%) recorded the three highest number of deaths in facilities (N=8994).

6. HEALTHCARE WORKERS

6.1. Cases and deaths among HCWs

The number of reported healthcare workers who tested positive for SARS-Cov-2 was 10,906 and 248 persons demised.

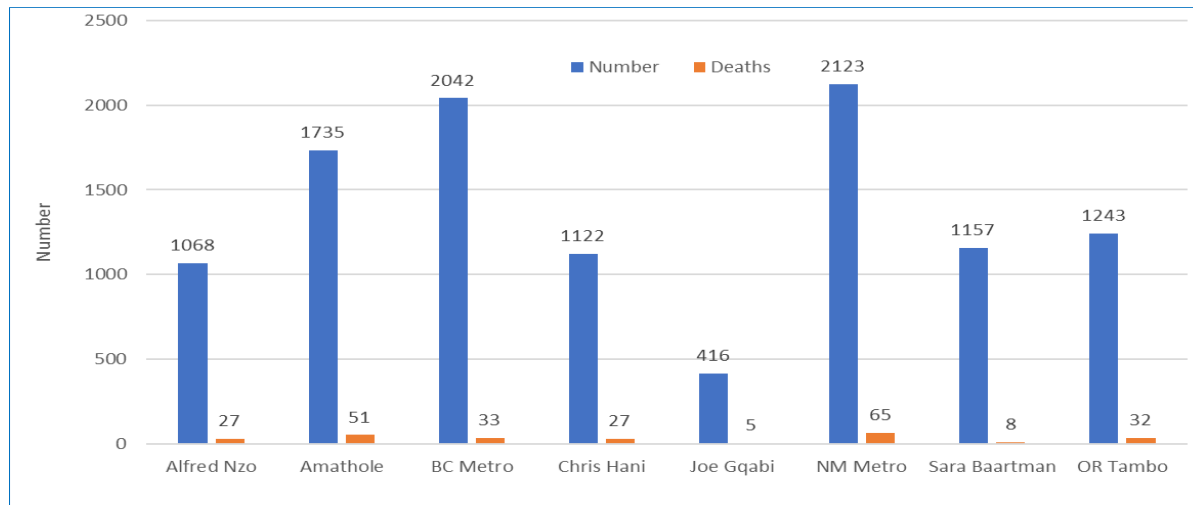


Fig. 20. SARS-Cov-2 positive Healthcare Workers, as on 03 Feb. 2021 (N = 10,906)

The number of healthcare workers who tested positive for SARS-Cov-2 in Buffalo City Metro was 2,042 (33 deaths), Nelson Mandela Metro 2,123 (65 deaths), Amathole 1,735 (51 deaths), Chris Hani 1,122 (27 deaths), OR Tambo 1243 (32 deaths) and Sarah Baartman 1157 (8 deaths) and Alfred Nzo (1068 cases, with 27 deaths). The Joe Gqabi (416 cases, with 5 deaths) reported least number of health care workers' infections and deaths.

6.2. SARS-Cov-2 Cases by job category

The table below provides the number of selected healthcare professionals employed by the State and SARS-Cov-2 cases by job categories, and the positivity rate of that job category.

	Number	Cases	Positivity Rate (%)
Admin	12434	689	5.5
Allied Professionals	3041	208	6.8
Doctors & Clinical Assoc	2369	405	17.1
Nurses	20650	4443	21.5
Emergency Medical Services	2498	257	10.3

The positivity rate among the nurses was 21.5%, followed by doctors and clinical associates (17.1%), allied professionals (6.8%), EMS (10.3%), and admin personnel (5.5%). The positivity rates among healthcare workers have a negative impact on patient safety, staff morale and confidence, and the capacity of the State to provide quality health services to the population.

6.3. Case Fatality Rate (%) among HCWs

The figure below provides the cases fatality rate among all healthcare workers.

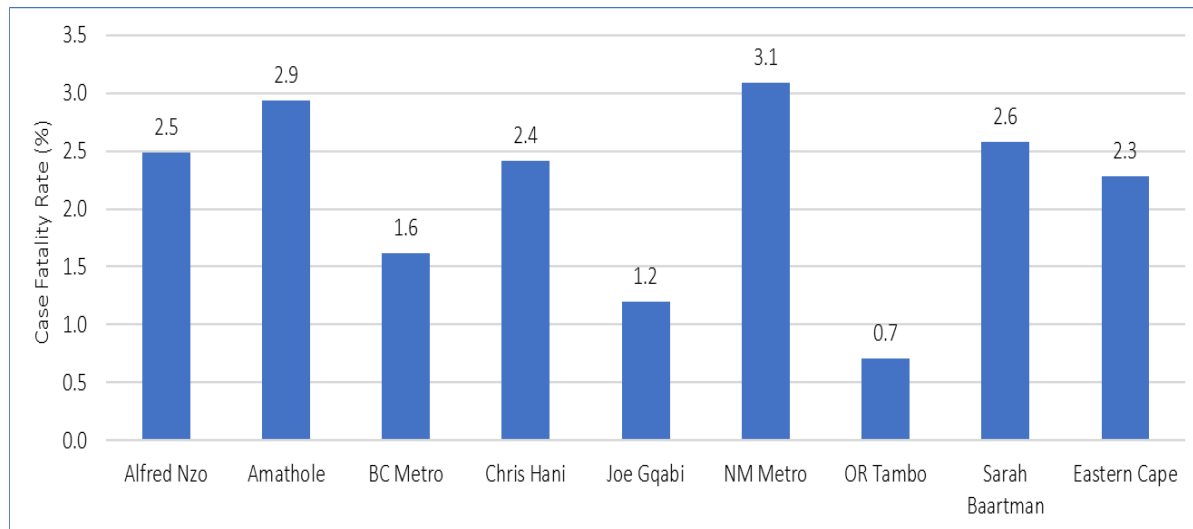


Fig. 22. SARS-Cov-2 Case Fatality Rate (%) among HCWs, as on 03rd Feb. 2021 (N=248)

The case fatality rate among healthcare workers was 2.3%. Nelson Mandela Metro, Amathole, Alfred Nzo, Chris Hani and Sarah Baartman had each more than 2% of the healthcare workers succumbing to SARS-Cov-2, Buffalo City Metro (1,6%). The lowest case fatality rate was observed in OR Tambo (0,7%).

7. Hospitalization and outcomes

7.1. Admissions and outcomes

The cumulative number of SARS-Cov-2 hospitalizations is 30,588 (DATCOV).

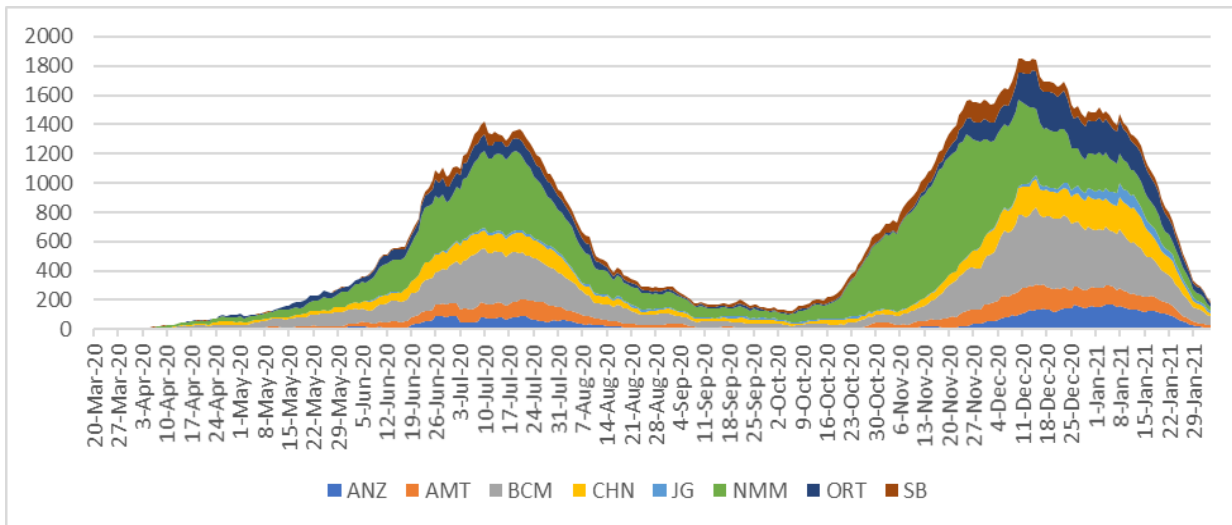
District	Public	Private	Total	Percentage
Alfred Nzo	1636	86	1722	5.6
Amathole	2318	0	2318	7.6
Buffalo City Metro	4190	2987	7177	23.5
Chris Hani	2499	726	3225	10.5
Joe Gqabi	630	0	630	2.1
Nelson Mandela Bay Metro	6517	4304	10821	35.4
O R Tambo	2132	855	2987	9.8
Sarah Baartman	1575	133	1708	5.6
Total	21497	9091	30588	100

Of the reported hospitalizations, 21,497 (70.3%) occurred in public sector and 9091 (29.7%) in private sector health facilities. The metros account for about 58.8% of total admissions.

Eastern Cape Total	Private	Public	Total
Died	2205	6800	8994
Discharged alive	6611	12689	19300
In Hospital	245	537	782
Transfer to other facility	30	1471	1501
ICU	99	7	106
High care	10	46	56
General	131	438	569
On Oxygen	87	265	352
Ventilated	42	9	51

More than 60% of hospitalized patients were discharged alive and more than 63% of the reported discharges were from the public sector. Over a quarter of hospitalized cases demised due to SARS-Cov-2 related causes with 75.6% of reported deaths occurring in public sector facilities (DATCOV).

Of 782 current admissions, about 37.9%, were admitted in the general ward, 7.1% in ICU and 52.8% in High Care. About of 61% of the current admissions were on oxygen and 14.4% were on ventilation.



*Daily admissions' 7-day moving average updated based on the availability of data

Fig. 23 *Average (7 day moving) daily admissions, Eastern Cape Health Facility Districts, as on 03rd Feb. 2021 (DATCOV)

As reported on DATCOV on 02 February 2021, the Nelson Mandela Metro accounts for 35% of all hospitalizations, followed by Buffalo City Metro (24.4%).

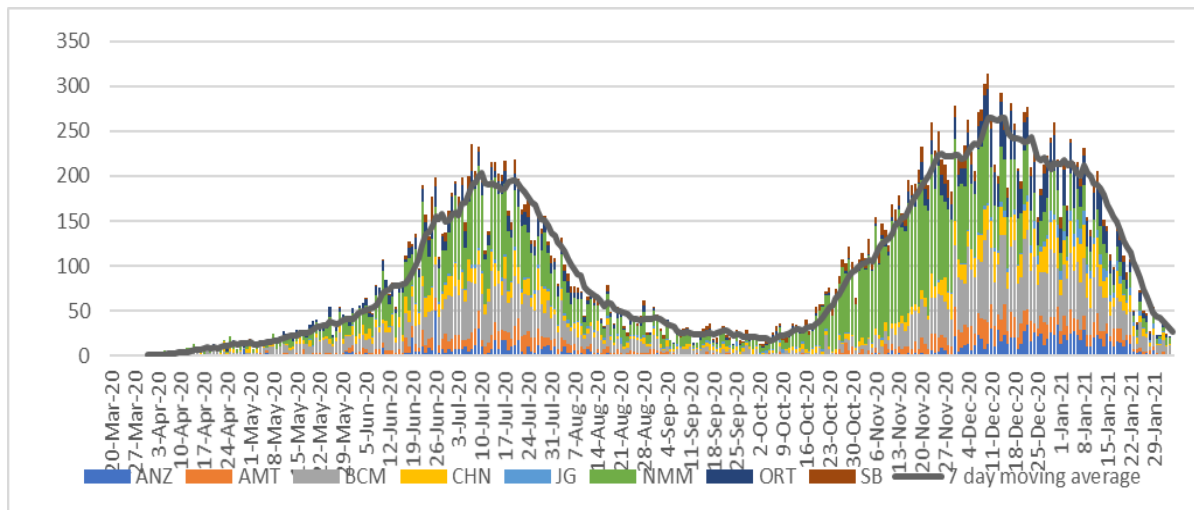


Fig. 24. No. of hospitalizations by date of admission for each district, as on 03rd Feb. 2021

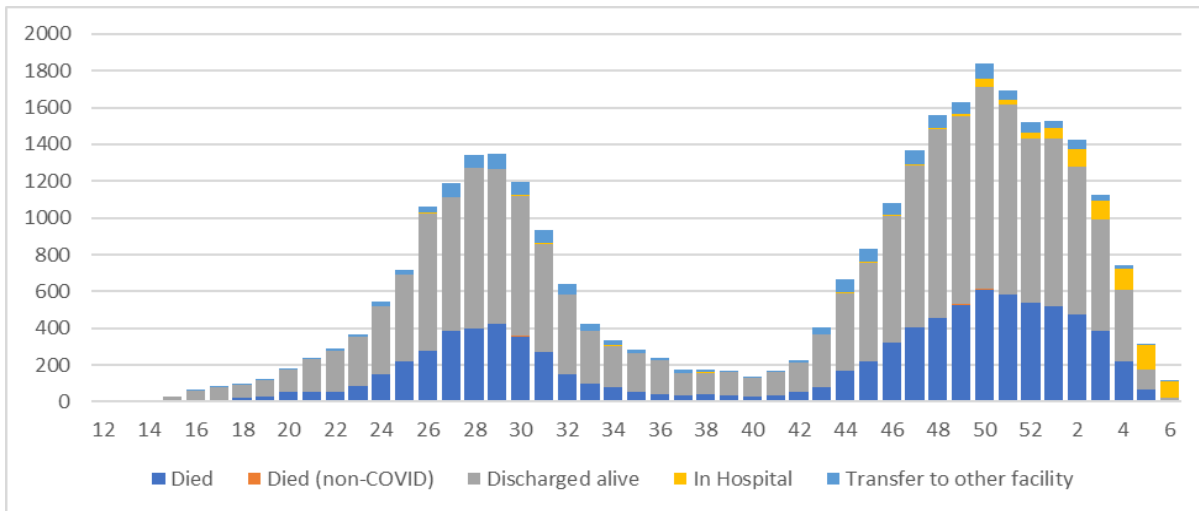


Fig. 25. Hospitalizations & outcomes by admission week, as on 03rd Feb. 2021 (DATCOV)

The number of currently hospitalized patients remained high during the last part of the year and started to decline thereafter (Figure 24 & 25).

7.2. Co-morbidities among admitted cases and deaths

The most common co-morbidities among the hospitalized SARS-Cov-2 patients were hypertension (34%) and diabetes (22.8%) among hospitalized SARS-Cov-2 cases. Two other co-morbidities which were common include HIV (6.2%) and obesity (4.7%).

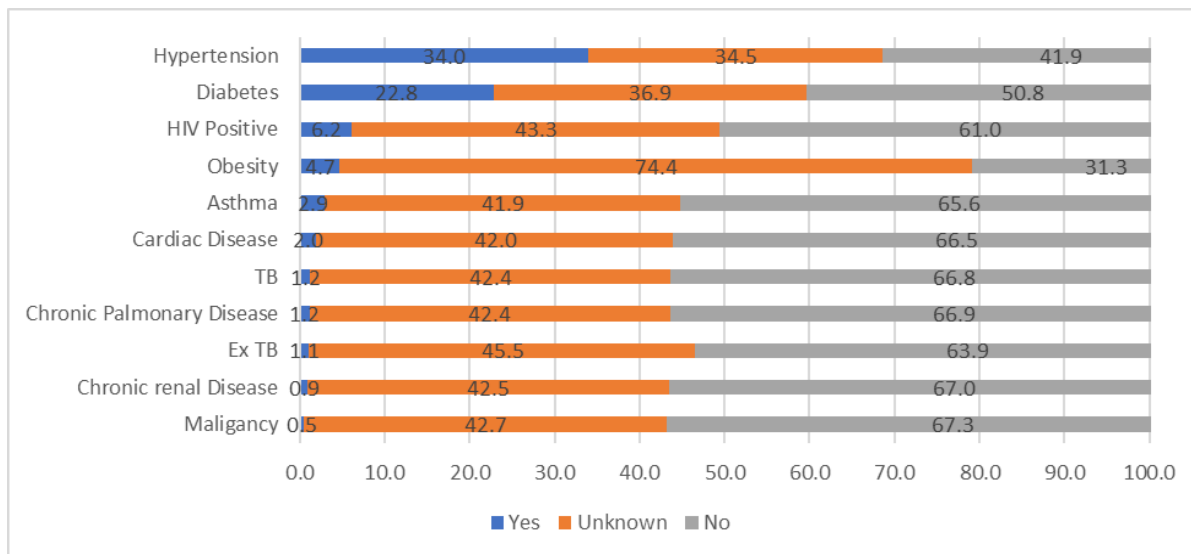


Fig. 26. Co-morbidities among SARS-Cov-2 hospitalizations, as on 03rd Feb. 2021 (DATCOV)

A significant percentage of hospitalized patients did not have co-morbidities. The concern was those cases, which lacked information on the existence of the co-morbidities. This may have resulted in the under-estimation of the burden of co-morbidities among hospitalized SARS-Cov-2 cases.

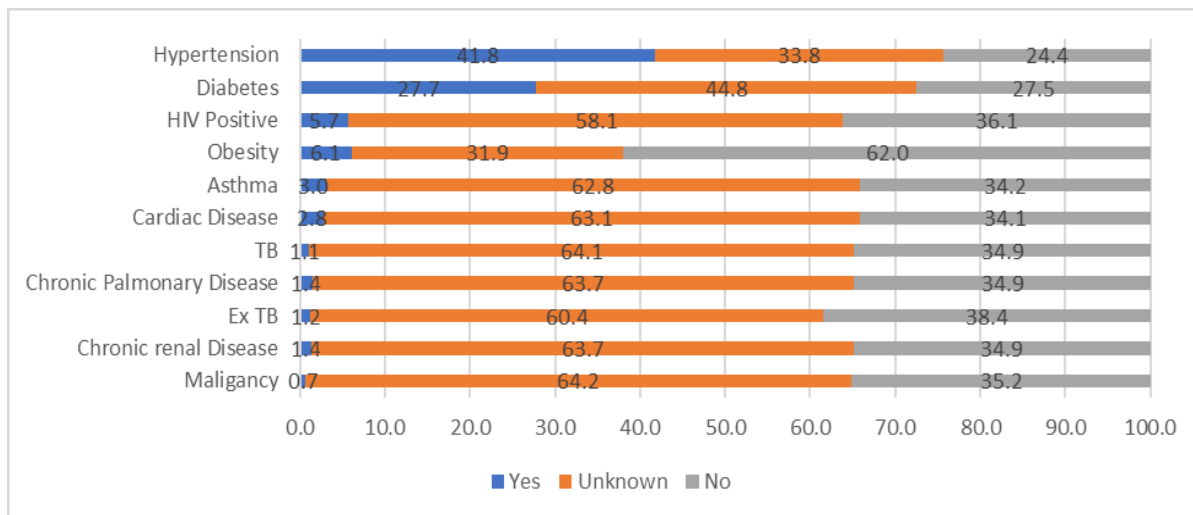


Fig. 27. Co-morbidities among SARS-Cov-2 cases who demised, as on 03rd Feb. 2021 (DATCOV)

The most common comorbidities among those cases that demised in the hospital include hypertension (41.8%) and diabetes (27,7%). Four other co-morbidities obesity (6.1%), HIV (5,7%), cardiac diseases (2.8%), and asthma (3%).

8. CONCLUSION

The burden of disease remains high in nearly all the districts but gradually decreasing. This may be due to the impact of the public health interventions, which were implemented in all the districts. Nearly half of the active cases were from BC Metro, Chris Hani and Amathole; and a quarter of the active cases are from OR Tambo and Alfred Nzo. Unfortunately, the number of deaths have significantly increased with the increase in the number of cases.

There are key issues, which require improvement;

- Strengthen surveillance of SARS-Cov-2 including collection and testing of specimens
- Prioritize contact tracing and monitoring to minimize the spread of the infections
- Isolate positive cases and quarantine contacts to minimize transmission
- Promote the use of prevention measures against SARS-Cov-2, i.e. wearing of masks, social distancing, and frequent handwashing



3 577 773

No Screened



822 576

Total Lab Tests



192 467

Positive Cases



178 761

Recoveries



10 827

Deaths

DISTRICT	TOTAL SCREENED	TOTAL TESTED	TOTAL CASES	RECOVERIES	DEATHS	ACTIVE CASES	AREAS
ALFRED NZO	694 706	29 026	7 868	7 213	403	252	Badibanise,Bhakubha,Bizana,Brooksnek,Cedarville,Chithwa,Dutyini,Emanxiweni,Ezinteteni,Kokstad,Lucingweni,Maluti, Mandilini , Matatiele,Mount Ayliff, Mount Frere , Ndlantana, Ngcingo , Ntabakhulu, Sugar Bush, Tabankulu
AMATHOLE	658 126	72 693	19 094	17 543	1053	498	Adelaide, Alice, Bolotwa, Butterworth, Cathcart, Centane, Cuba, Debe Nek, Dikana, Elliotdale, Ethafeni, Frankfort, Fort Beaufort, Ibika, Idutywa, Keiskammahoek, Willowale, Lower Mbangcolo,Debe Nek, Mgababa, Nyaniso, Peddie
BUFFALO CITY METRO	210 367	122 554	38 347	35 820	2292	235	Abbottsford, Amalinda , Beacon Bay, Bisho, Braelynn, Buffalo Flats, Dimbaza, Duncan Village, East London, Ginsberg, Gonubie, Greenfields, Haven Hills, King William's Town, Mamata, Mdantsane, Masingata, Mantlani, Nahoon, Ndevana, Needs Camp, Parkside, Selbourne, Sunnyridge, Sunset Bay,Tshatshu, Vincent, West Bank, Zwelitsha
CHRIS HANI	515 346	60 682	19 281	16 861	1463	957	Bankies, Dordrecht, Dukathole, Ekunene, Ezibeleni, Kwanobuhle, Mcwangele, Madeira Park, New Rest, Ngcobo, Nkonyama, Popcorn Valley, Qebe, Qoqodala, Queenstown, Sigadleni, Vaalbank, Sada, Middleburg, Thornhill, Ndzamela, Mlungisi,Westbourne,Ntlonze, Maya Village,Ekuphumuleni, TopTown, Vleiport, Zola
JOE GQABI	87 855	24 759	7 322	6 734	357	231	Aliwal North, Barkley East, Bhodi, Land Camp, Ugie, Inglewood, Maclear, Solomzi, Sunduza,Robberv, Venterstad
NELSON MANDELA METRO	856 883	171 422	54 984	51 652	3235	97	Algoa Park, Bethelsdorp, Bloemendal, Bluewater Bay, Boosens Park, Cotswold, Cuyler, Daleview, Despatch, Fernglen Port, Gelvandale, Govan Mbeki, Heath Park, Helenvale, Jacksonville, Joe Slovo, Kabega Park, Kamma Park, Kamvelihle, Khayathu, Kleinskool, Kwa Dvesi, Kwa-Magxaki, Kwanobuhle, Kwanoxolo, KwaZakhele, Lovemore Heights, Missionvale, Motherwell, Mount Croix, New Brighton, Newton Park, North End, Port Elizabeth, Rowallan Park, Salt Lake, Sardinia Bay, Schauderville, Sherwood, Silvertown, Soweto-On-Sea, Steve Tshwete, Summerstrand, Tamboville, Uitenhage, Veeplaas, Walmer, West End, Westering, Zwide, Lorraine, Hillside, Daleview
OR TAMBO	265 613	80 211	22 277	20 621	1188	468	Gomora, Lutatweni, Machibi, Majola, Mandilini ,New Payne Ngqeleni, Ntsimbini, Old Payne, Libode, Lusikisiki, Mqanduli, Tombo, Marhewini, Mpikwana,Bhongweni,Cibeni, Flagstaff,Magcakeni,Ngangelizwe, Ngqanda,Tyebelana, Pollar Park, Tabase Mission, Slovo Park, Southernwood, Waterfall Park, Zandukwana,Zimbane, Ziphunzana
SARAH BAARTMAN	288 877	90 102	21 601	20 674	836	91	Aberdeen, Alexandria, Graaf-Reinet, Grahamstown, Jeffrey's Bay, Joubertina, Humansdorp, Parson, St. Francis Bay, Kirkwood, Lotusville, Bergendal, Bratenfel, Joza, Santaville, Somerset East, Thornhill, Willomore
IMPORTED*	-	0	595	595	0	0	Bloemfontein, Ceres, Cape Town, Dunoen, Fishoek, George, Green Point, Gugulethu, Hout Bay, Langa, Khayelitsha, Knysna, Phillipi, Stellenbosch, Strand
PENDING	-	171 127	1098	1048	0	50	
GRAND TOTALS	3 577 773	822 576	192 467	178 761	10 827	2 879	

ACKNOWLEDGEMENTS

- The epidemiological and surveillance functions continue because of the strong partnership between the following stakeholders;
- World Health Organization with epidemiologists, biostatisticians, and technical support
- The National Institute for Communicable Diseases (NICD) provided the province with epidemiologists and technical support
- The data analyst from TB/HIV Care has supported data management, mapping of the cases and other functions in the department
- Right to Care assists in mapping the cases in different areas in the province
- Centre for Disease Control (Atlanta-Pretoria) provided the Department with an epidemiologist and a statistician to support the province
- The Department of Health, both the National and Provincial Department of Health re-purposed the employees to focus on the control and prevention of the pandemic
- Laboratories; National Health Laboratory Services, Pathcare and Ampath for prompt and regular reporting of SARS-Cov-2 cases.

Appendix 1: Incidence rate by Eastern Cape Districts and week of specimen collection as of 31 December 2020 Week 2 is interim data is incomplete and has been excluded.

