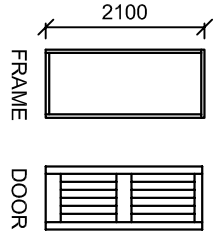
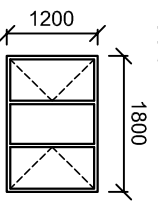
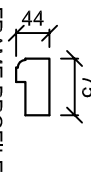

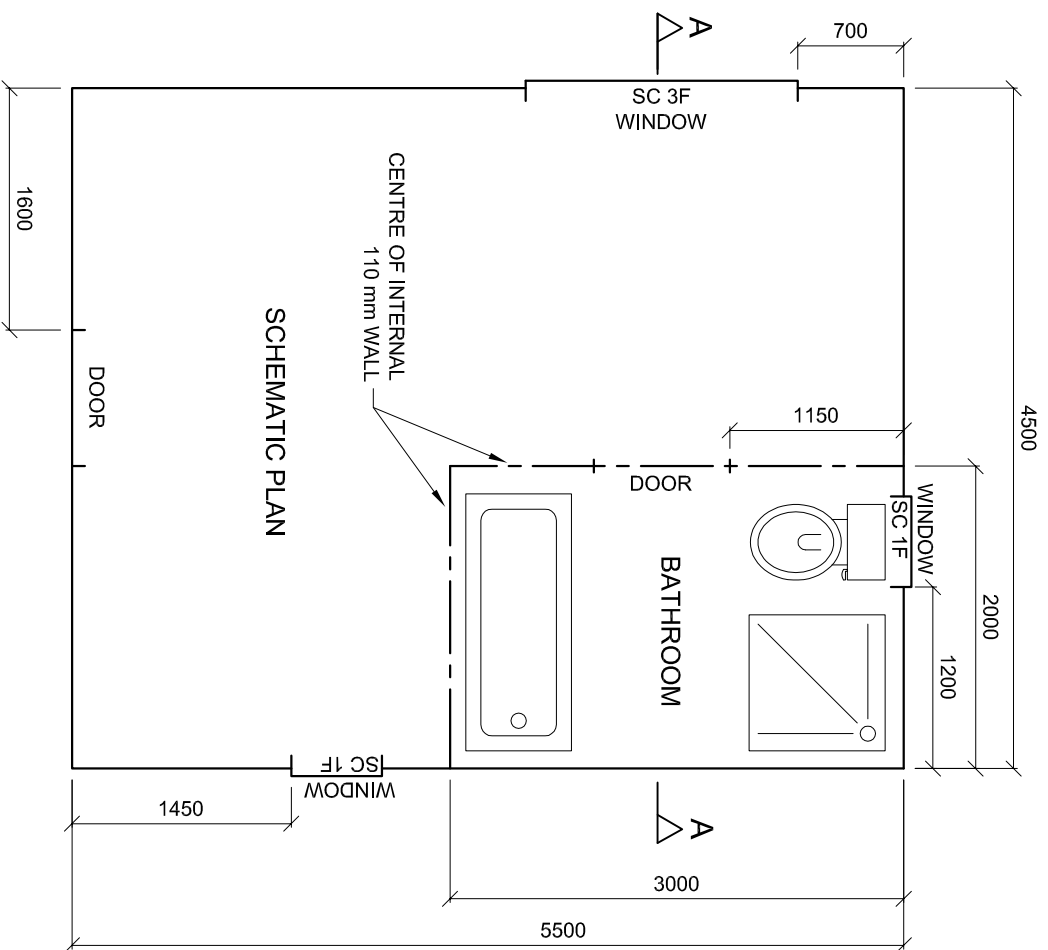


SCHEMATIC SECTIONAL ELEVATION

DOOR AND WINDOW SCHEDULE		
<b>PROPOSED NEW COTTAGE ON ERF 2010 GRAHAMSTOWN</b>	<b>DRAWING No. COT 2010</b>	<b>AFRICA ARCH</b> 102 BEATRICE STREET GRAHAMSTOWN 043 595 5105
<b>DOOR FRAME</b> 2 STANDARD, EXTERNAL, HARD WOOD 900 	<b>WINDOW</b> STANDARD, HARD WOOD, 1 x SC 3F 1200 1800 	<b>DOOR</b> 2 HW FRAMED, LEDGED AND BATTENED 75 
<b>IRONMONGERY</b> 2 PAIRS of 75 mm BRASS HINGES and SCREWS, 2 TWO-LEVER LOCKSETS	<b>GLAZING</b> 2 x SC 1F 900 	3 mm CLEAR GLASS



SCHEMATIC PLAN

**QUESTION 4: CIVIL DRAWING**

**Given:**

- A schematic floor plan and schematic sectional elevation of the outer perimeter of a **proposed new cottage**, and the position of all the features.
- A door and window schedule.
- Incomplete sketches of the foundation detail.
- Answer sheet on page 6 shows the completed plan view of the cottage.

**Instructions:**

- Use the answer sheet and the information given on page 5 to draw the required view.
- Draw, to scale 1:50, a complete sectional elevation on cutting plane AA to the given specifications.

**SPECIFICATIONS:**

**A SECTIONAL ELEVATION**

**Add the following features to the sectional elevation:**

- The complete foundation, walls and floor slab detail
- The door and complete window detail
- ALL necessary hatching
- Label the sectional elevation: **SECTIONAL ELEVATION A-A**

**NOTE:**

- Label **ONLY** the following features: natural ground level and damp proof course.
- ALL substructure hatching may be done in freehand.
- ALL drawing must comply with the guidelines contained in the **SABS 0143**. Conventions may be used. **[37]**

**TERMINOLOGY**

*Schematic diagram*: a diagram that shows the main features or relationships but not the details.