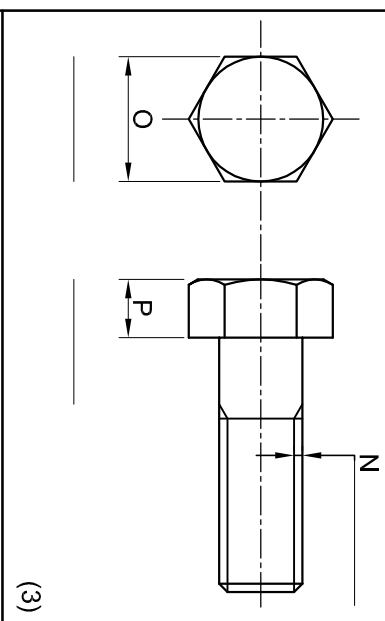




QUESTION 1(a)
Views of a bolt are given. Write in the missing RATIOS in terms of the diameter of the bolt in the spaces provided.

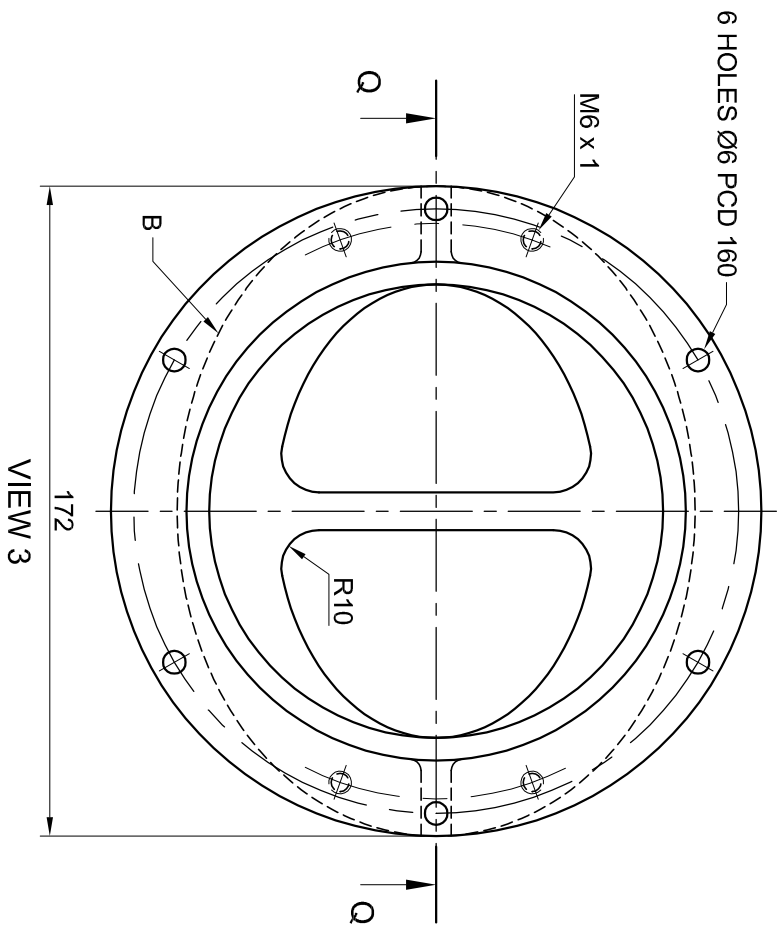


QUESTION 1 (b)

Given: Three views of a joint and the relevant information as well as a table of questions are shown.

Instructions: Complete the table by neatly printing the answers, which all refer to the drawing, in the prepared column.

(13)

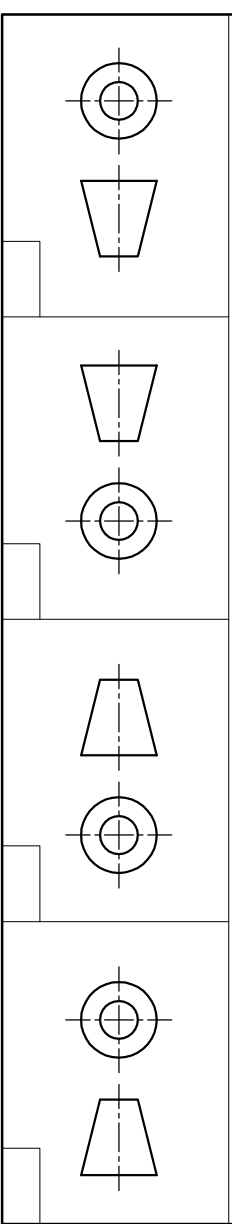


QUESTION 1: ANALYTICAL (MECHANICAL)

No.	QUESTION	ANSWER	
1	What is the name of the manufacturing company?		1/2
2	What is the e-mail address of the company?		1/2
3	What is the file name of the drawings?		1/2
4	Who initially revised the drawing?		1/2
5	What material is used to manufacture the joint?		1/2
6	What scale is used for the drawing?		1/2
7	If scale 1:1 were used to draw the joint, what would the dimension of R10 be?		1
8	What is the radius of the fillet curves?		1
9	Label view 1.		1
10	Name the feature labelled A.		1
11	Which projection system is used to draw the joint?		1
12	What is the shape of the feature labelled B?		1
13	How many screw threads need to be tapped on the joint?		1
14	What does the abbreviation "PCD" stand for?		1
15	Determine the dimensions at C and D.	C	1
		D	1
			(13)

QUESTION 1(c)

Indicate by means of a ✓ (tick) the correct third angle projection symbol in the space provided. (1)



UNLESS SPECIFIED OTHERWISE ALL TOLERANCES ON DIMENSIONS ARE: ± 0,01

DRAWN: *LEON*
DATE: 08/05/2008

REVIEWED: *JOTLAN*
DATE: 09/06/2008

APPROVED: *SALITE*
DATE: 10/06/2008

SCALE 1:2

INCANDA ENGINEERING

113 Cathcart Street
King William's Town
5432
043 - 247 0365
info@incanda.com

VERSION	REVISION	DATE	BY	REVIEWED
B	Review base design	2008/07/07	Mannie	Diamini
A	Review elliptical plate	2008/07/08	Mannie	Diamini

TITLE: **JOINT**

MATERIAL: CAST IRON

NUMBER REQUIRED: 135

DRAWING No: AQ-007

FILE NAME: EGD/G11/09

QUESTION	ANSWER	NAME
Question 1(a)	3	
Question 1(b)	13	
Question 1(c)	1	
TOTAL	17	NAME