



Province of the
EASTERN CAPE
EDUCATION

DIRECTORATE SENIOR CURRICULUM MANAGEMENT (SEN-FET)

HOME SCHOOLING SELF-STUDY WORKSHEET ANSWER SHEET 85


SUBJECT	COMPUTER APPLICATIONS TECHNOLOGY	GRADE	12	DATE	17/8/20
TOPIC	MATCHING QUESTIONS: Revision	TERM 1 REVISION		TERM 4 CONTENT	✓

QUESTION 1

- 1 J
- 2 D
- 3 M
- 4 S
- 5 G
- 6 B
- 7 P
- 8 C
- 9 A
- 10 H

QUESTION 2

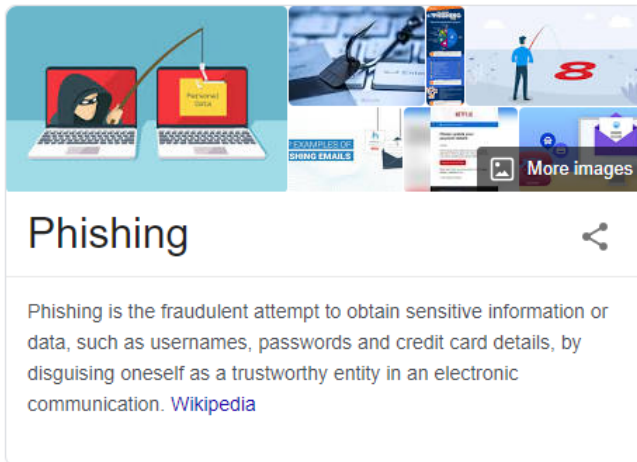
E = USB HUB



USB hub

A USB hub is a device that expands a single Universal Serial Bus port into several so that there are more ports available to connect devices to a host system, similar to a power strip. USB hubs are often built into equipment such as computer cases, keyboards, monitors, or printers. [Wikipedia](#)

F = Phishing



I = Trojan



K = 1G = 1 Gigabyte of storage or data 1024kb

L = Spell Check = feature that corrects your spelling in an application

N = VGA

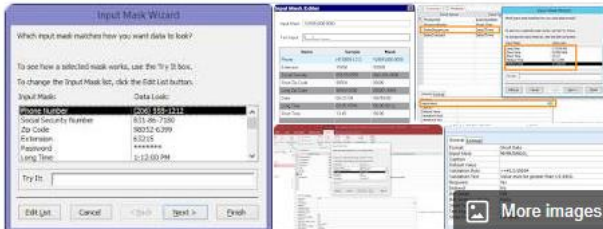


VGA connector

A Video Graphics Array connector is a three-row 15-pin DE-15 connector. The 15-pin VGA connector was provided on many video cards, computer monitors, laptop computers, projectors, and high definition television sets. [Wikipedia](#)

Designed: 1987

O = Input Mask =



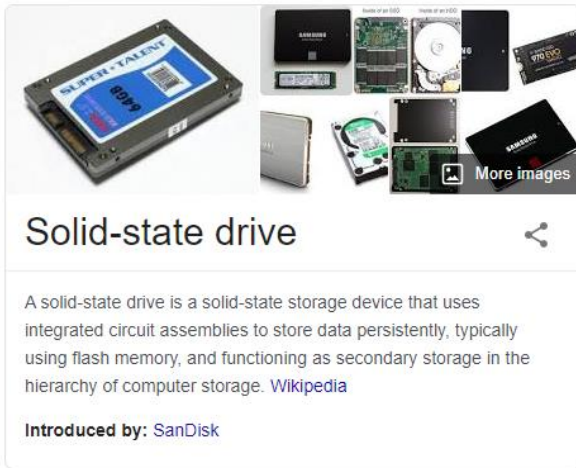
Input mask

In computer programming, an input mask refers to a string expression, defined by a developer, that constrains user input. It can be said to be a template, or set format that entered data must conform to, ensuring data integrity by preventing transcription errors. [Wikipedia](#)

Q = External HDD

An **external hard drive** is a **portable storage** device that can be attached to a computer through a **USB** or FireWire connection, or wirelessly. **External hard drives** typically have high **storage** capacities and are often used to back up computers or serve as a network **drive**.

R = SSD



T = Wi-Fi

Wi-Fi is defined as an abbreviation for wireless fidelity, meaning you can access or connect to a network using radio waves, without needing to use wires.