



Province of the  
**EASTERN CAPE**  
EDUCATION

**DIRECTORATE SENIOR CURRICULUM MANAGEMENT (SEN-FET)**

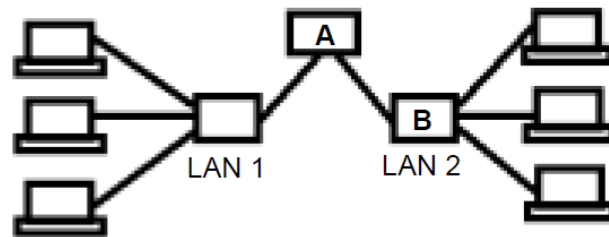
**HOME SCHOOLING ASSESSMENT 11**

<b>SUBJECT</b>	COMPUTER APPLICATIONS TECHNOLOGY	<b>GRADE</b>	12	<b>DATE</b>	12/6/20
<b>TOPIC</b>	Assessment 10: Integrated Scenario	<b>TERM 2 REVISION</b>		<b>TERM 4 CONTENT</b>	✓
<b>TIME ALLOCATION</b>	45 minutes (25 marks)	<b><u>TIPS TO KEEP HEALTHY</u></b>			
<b>INSTRUCTIONS</b>	<ol style="list-style-type: none"><li>1. You will need a book to write your answers in and something to write with.</li><li>2. Answer the following questions in your workbook in full sentences where applicable.</li><li>3. Do not refer back to your textbook while answering these questions.</li></ol>	<ol style="list-style-type: none"><li>1. <b>WASH YOUR HANDS</b> thoroughly with soap and water for at least 20 seconds. Alternatively, use hand sanitizer with an alcohol content of at least 60%.</li><li>2. <b>PRACTICE SOCIAL DISTANCING</b> – keep a distance of 1m away from other people.</li><li>3. <b>PRACTISE GOOD RESPIRATORY HYGIENE:</b> cough or sneeze into your elbow or tissue and dispose of the tissue immediately after use.</li><li>4. <b>TRY NOT TO TOUCH YOUR FACE.</b> The virus can be transferred from your hands to your nose, mouth and eyes. It can then enter your body and make you sick.</li><li>5. <b>STAY AT HOME.</b></li></ol>			

Your school principal asked you to use your CAT skills to give advice with establishing an online school newspaper. Computer equipment will have to be purchased for this purpose.

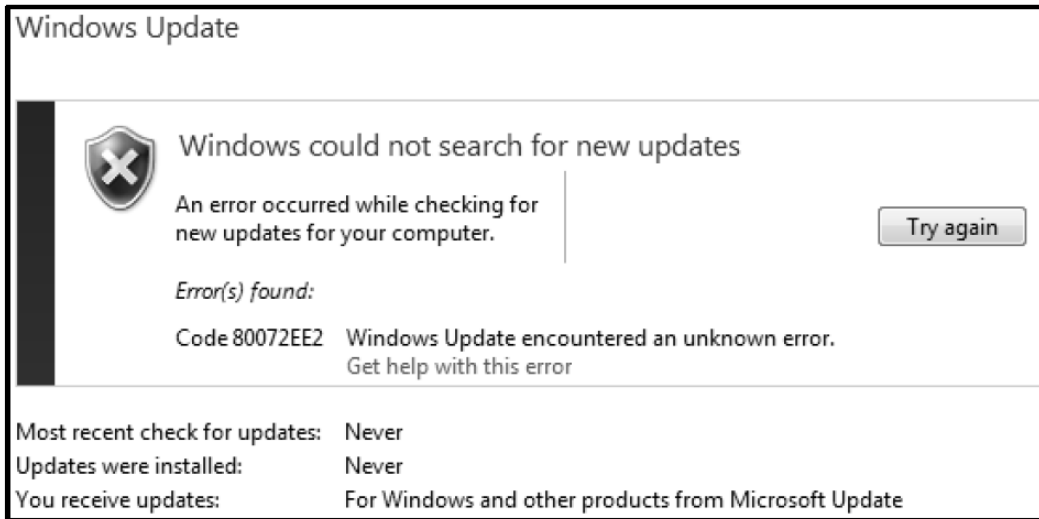
- 1 Describe TWO hardware characteristics of entry-level computers that make them different from high-end machines. (2)
- 2 Suggest TWO examples of application software that may need to be installed to facilitate the publishing of the school newspaper. (2)
- 3 The home page of the newspaper website will be based on a template.  
Explain what a *template* is. (1)

- 4 As part of your advice you drew a diagram of how the newspaper office network (LAN 1) should be connected to the school network (LAN 2).



- 4.1 Name device **A** connecting the two LANs. (1)
- 4.2 Name device **B** on LAN 2. (1)
- 4.3 State TWO ways in which access to the LAN 1 network can be controlled. (2)
- 4.4 State TWO advantages of using cables to connect the computers in the network. (2)
- 5 Links to the newspaper articles will be posted on social media.  
State TWO advantages of using Facebook to share the newspaper. (2)
- 6 Give ONE reason why FOSS instead of proprietary software should be used at the newspaper office. (1)

- 7 The error message below appeared on one of the computers in the newspaper office, preventing it from getting updates.



- 7.1 Discuss TWO possible reasons for the error. (2)
- 7.2 State ONE implication of the error message. (1)
- 8 State TWO ways in which the school can backup their data so that it is stored in another location. (2)
- 9 A database table with author and article names as fields will be used to store the information about learners who contribute towards content in the newspaper.
- 9.1 Discuss TWO reasons why it would be better to use a form instead of the datasheet view of a table for capturing data. (2)
- 9.2 Name TWO database tools that can be used to determine who contributed the most articles towards the newspaper. (2)
- 10 Give TWO reasons why it would be a good policy to have USB ports disabled by default on the LAN used by the newspaper office? (2)

**[25]**